

2016/17

# Mataura Catchment

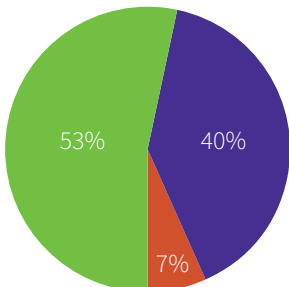
## Compliance monitoring report summary

### Dairy consent compliance

	Mataura	Southland
Full compliance	64.8%	69.1%
Minor non-compliance	28.9%	26.6%
Significant non-compliance	5.9%	4.1%

### Industry consent compliance\*

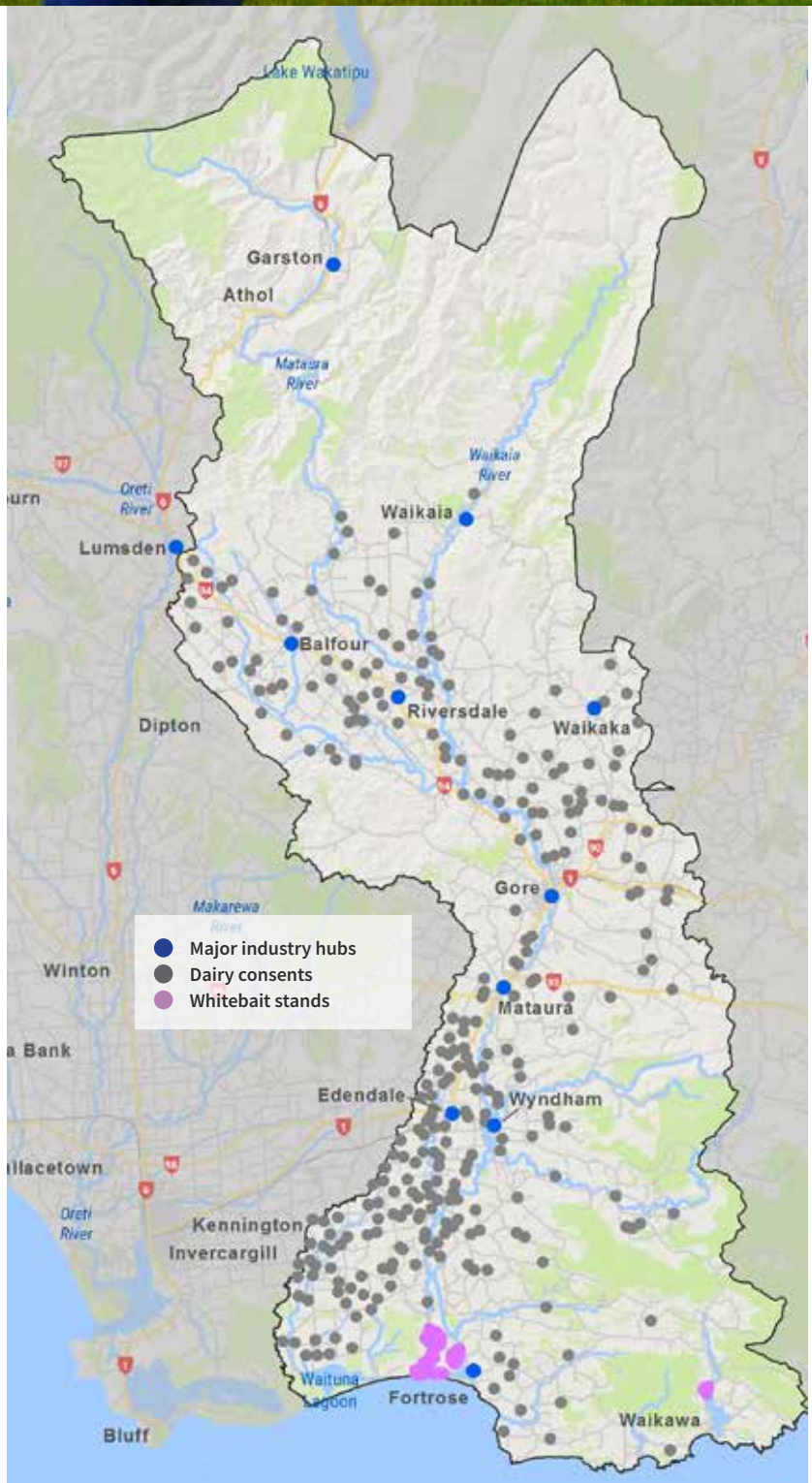
- Good to excellent
- Moderate to technical issues
- Significant non-compliance



\*Assessment of compliance includes industry and council sewerage systems overall performance against consent conditions.

### Whitebait stand compliance

	Titiroa Stream	Waikawa River
Full compliance	80.9%	64%



# The Mataura catchment in numbers

- ▶ is over 3500 km<sup>2</sup>
- ▶ has ten rainfall gauges and 16 river level recorders
- ▶ has 1189mm of average annual rainfall at the Mokoreta River at Mt Alexander
- ▶ highest recorded flood was on the Mataura River at Gore was on 14 October 1978 and measured 2297 cumecs, 4.69m above normal
- ▶ lowest recorded river level was 6.2 cumecs at the Mataura River at Tuturau on 15 March 1956

## Dairy partnership recognised

A successful partnership between Environment Southland and major dairy industry players to support farmers needing to improve effluent management practices was a finalist in the Local Government New Zealand EXCELLENCE Awards. The Southland Dairy Effluent Advisory Group was a finalist in the Air New Zealand EXCELLENCE Award for Environmental Impact. It sees the council working with industry organisation DairyNZ, and dairy companies Fonterra and Open Country Dairy, to provide advice to farmers struggling to comply with discharge consents. The Award judges described the Advisory Group project as “a very good project with potential to be used as a model by other regions”.

## Meet your compliance officers



### Michelle Te Maro (Oreti, Mataura, Aparima)

Michelle has worked for Environment Southland since January 2009. Starting as a contactor, Michelle initially covered compliance with all kinds of activities, from dairy to coastal, just about anywhere in Southland. In a normal day she could visit six different consent holders. She also plays a key part in the incident response team for our 24-hour pollution hotline. Michelle is credited with initiating the ‘shed talk’ programme.



### Rob Bird (Oreti, Mataura, Aparima)

Rob has worked for Environment Southland for nearly four years. In a normal work day you’ll find him out and about doing monitoring, enforcement and educating people on their consent conditions. Rob enjoys getting out to have a chat and fix issues people are having. Rob is keen to maintain the long-term sustainability of farming, not just more rules ‘to make life difficult’.



### Mike Trent (Oreti, Mataura)

Mike has joined the team this year and comes from a Compliance background having worked for the Ministry for Primary Industries (MPI) as a senior compliance officer for about 15 years. As senior investigator, his main role is looking into breaches of the Resource Management Act, and following through with appropriate enforcement actions where necessary. He also does some consent monitoring work.



### Alex Erceg (Oreti, Aparima)

Alex is one of the newest member of the Compliance team, but comes from a farming background, having been born and raised on a farm in the North Island. Alex spends his time monitoring resource consents, mainly dairy, and enjoys the opportunity to get out and meet new people and help with moving towards good practices to aid environmental protection. He also does some enforcement work.

*Waiau catchment – position to be filled.*

## Shed | talks

**A tool used by compliance staff helps to reduce risks to the environment, while also breaking down some of the myths about compliance officers.**

The aim of a shed talk is to provide a better understanding of the conditions set out in the consent, and to point out spots on the farm where there is a higher risk of effluent reaching waterways. Shed talks are free. If you’d like to take advantage of this service, then give us a call on 0800 76 88 45 or email [service@es.govt.nz](mailto:service@es.govt.nz). Places each season are limited.