

Intensive winter grazing



Grazing of stock on forage crops between May and September (inclusive).

From 1 May 2019, rules around intensive winter grazing will change and a consent may be required for this activity to occur on your property.



As an activity, intensive winter grazing has a significant impact on Southland's water quality. This information will explain how these changes might affect winter grazing for you and outline the consenting process.

Up until 1 May 2019, intensive winter grazing is a permitted activity.

From 1 May 2019, there are a number of ways that you're intensive winter grazing activity can remain permitted. These include grazing only 15% of your landholding, up to a maximum

of 100 hectares, certain setbacks from waterways, having a Farm Environmental Management Plan and implementing good management practices.

Good management practices that are prescribed in the rule include:

- Stock are grazed on slopes from top to bottom (or a 20m buffer is left to be grazed last)
- Stock are back-fenced
- Transportable water troughs are provided

- Supplementary feed is placed in portable feeders

For a complete list of the good management practices required, see Rule 20 in the plan. If you cannot meet any of the criteria set out in the rule, you will need to apply for consent.

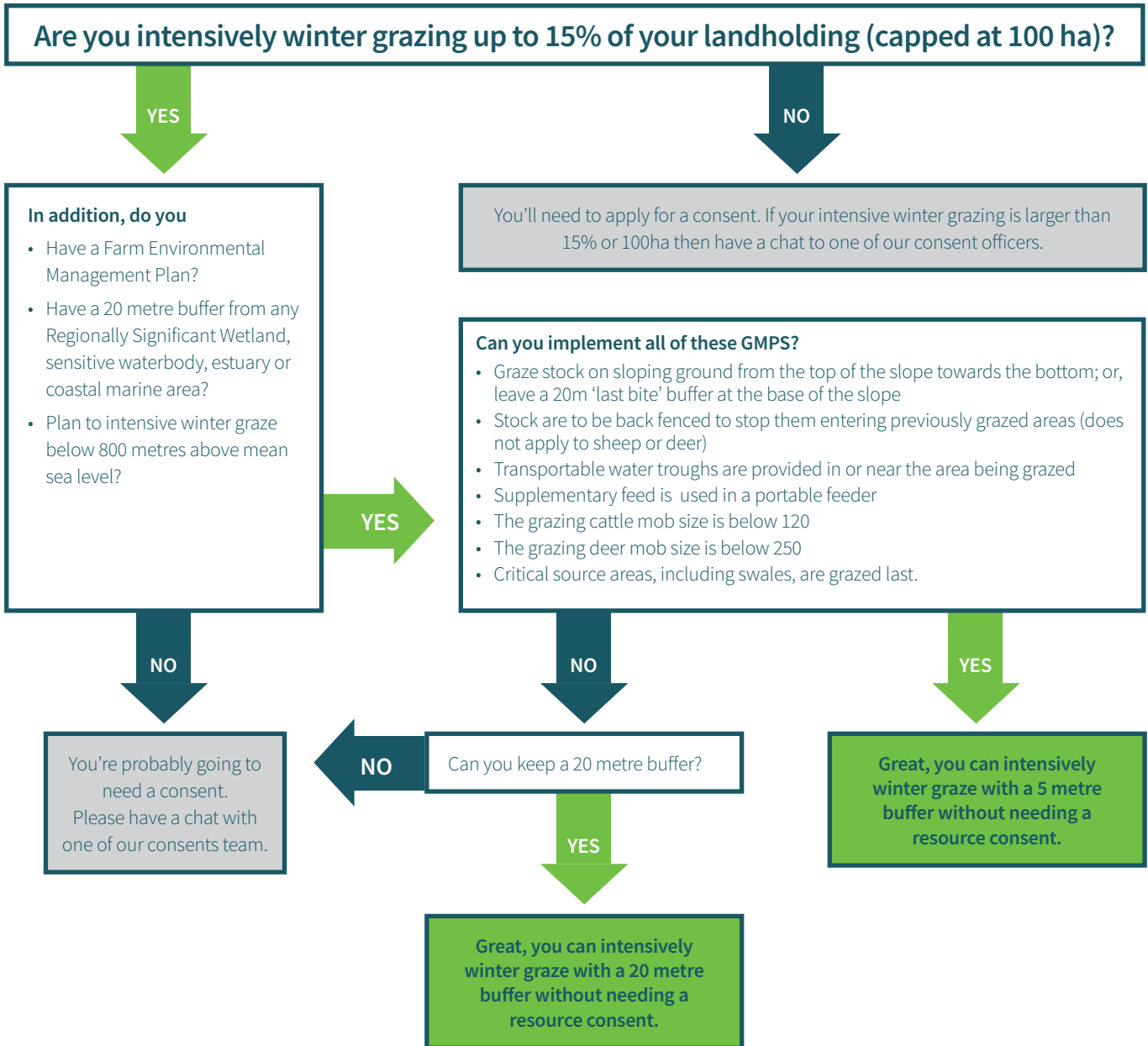
Use the flow chart on the back to see if you will need a consent. Still unsure, please get in touch with one of our consents officers for advice on 0800 76 88 45.

Definitions

Landholding – an area of land used as a single operating unit. Please refer to the full definition in the plan, or contact the consents team if you are unsure whether your property is one or more landholdings.

Regionally Significant Wetlands or Sensitive Waterbodies – Appendix A of the proposed plan lists Southland’s regionally significant wetlands and maps of them are included in Part B of the plan.

Farm Environment Management Plan – a plan outlining a farm’s operations with particular emphasis on mitigations in place to ensure losses to the environment are minimised. The requirements for what needs to be covered in an FEMP are listed in Appendix N of the plan.



The information provided is based on Rule 20 in the decisions version of the proposed *Southland Water and Land Plan*, April 2018.

*If you’re thinking about making a change to your farming activity, it’s important to remember what the proposed *Southland Water and Land Plan* is striving towards. Don’t forget to address the objectives and policies*

alongside the relevant rules when you are making an application for resource consent. The objectives and policies are the key drivers of the rules and need to be considered carefully.