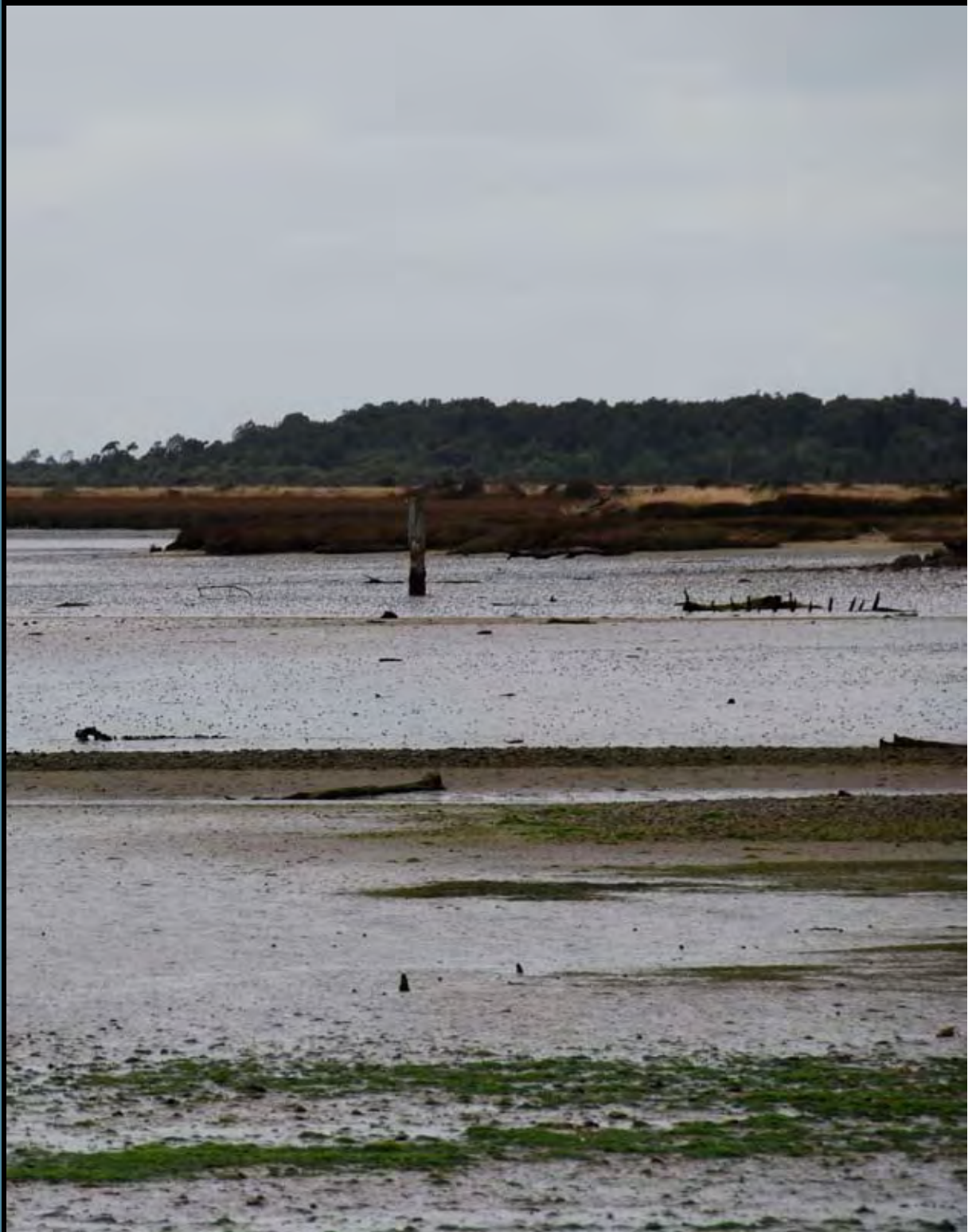


Fortrose (Toetoes) Estuary

Macroalgal Monitoring 2009/10



Prepared
for
Environment
Southland
April
2010

Cover Photo: *Enteromorpha* and *Gracilaria* growing along eastern flats of Toetoes Estuary.

Enteromorpha growing along the eastern shoreline adjacent to Fortrose.



Fortrose (Toetoes) Estuary

Macroalgal Monitoring 2009/10

Prepared for
Environment Southland

By

Leigh Stevens and Barry Robertson

Contents

1. Introduction and Methods 1
2. Results, Rating and Management 2
3. References 4

List of Figures

Figure 1. Map of macroalgal cover - Fortrose (Toetoes) Estuary, February 2010. 3

List of Tables

Table 1. Summary of macroalgal percentage cover results, February 2010 2
Table 2. Summary of condition rating and results, 2009-2010. 2

Macroalgae on the eastern shoreline, Fortrose Estuary.



1. INTRODUCTION AND METHODS

INTRODUCTION

Macroalgae is an important feature of estuaries, contributing to their high productivity and biodiversity. However, when high nutrient inputs combine with suitable growing conditions, nuisance blooms of rapidly growing algae e.g. *Ulva* (sea lettuce), *Gracilaria*, *Enteromorpha*, can occur. At nuisance levels such growths can deprive seagrass of light causing its eventual decline, while decaying macroalgae can accumulate on shorelines causing localised depletion of sediment oxygen, and nuisance odours.

This report summarises the fourth year of macroalgal monitoring in the Fortrose Estuary, one of the key estuaries in the Environment Southland's long term estuary monitoring programme. The report describes the intertidal macroalgal cover of the estuary in February 2010, and uses a macroalgal coefficient (described below) developed for Southland's estuaries to rate the condition of the estuary, and recommend monitoring and management actions. The next scheduled monitoring in Fortrose Estuary is in February 2011.

METHODS

Broad scale mapping of the percentage cover of macroalgae throughout all the intertidal habitat of Fortrose Estuary was undertaken in February 2010. Using a combination of aerial photography and ground-truthing, ArcMap 9.3 GIS-based digital maps were produced. The procedure, originally described for use in NZ estuaries by Robertson et al. (2002), has subsequently been modified and successfully applied to various estuaries to develop a separate GIS macroalgal layer (e.g. Robertson and Stevens 2007).

Environment Southland supplied rectified aerial photographs (~0.3 metre per pixel, scale 1:10,000) of the estuary, flown in February 2008. Experienced coastal scientists then recorded the percentage cover of macroalgae directly onto laminated photos during field assessment of macroalgal cover. The field maps were then used to create a GIS layer from which the percentage cover information was subsequently calculated.

The report outputs are used to both identify and classify macroalgal cover, and to show changes in macroalgal cover over time by comparisons with previous surveys. A summary table of the dominant species and classes of percentage cover is also produced, and management recommended.

SOUTHLAND ESTUARIES: MACROALGAE CONDITION RATING

A continuous index (the macroalgae coefficient - MC) has been developed to rate macroalgal condition based on the percentage cover of macroalgae in defined categories using the following equation: $MC = ((0 \times \% \text{macroalgal cover} < 1\%) + (0.5 \times \% \text{cover } 1-5\%) + (1 \times \% \text{cover } 5-10\%) + (3 \times \% \text{cover } 10-20\%) + (4.5 \times \% \text{cover } 20-50\%) + (6 \times \% \text{cover } 50-80\%) + (7.5 \times \% \text{cover } > 80\%)) / 100$. Overriding the MC is the presence of either nuisance conditions within the estuary, or where >5% of the intertidal area has macroalgal cover >50%. In these situations the estuary is given a minimum rating of FAIR and should be monitored annually with an Evaluation & Response Plan initiated.

MACROALGAE CONDITION RATING

RATING	DEFINITION (+Macroalgae Coefficient)	RECOMMENDED RESPONSE
Over-riding rating: Fair	Nuisance conditions exist, or >50% cover over >5% of estuary	Monitor yearly. Initiate Evaluation & Response Plan
Very Good	Very Low (0.0 - 0.2)	Monitor at 5 year intervals after baseline established
Good	Low (0.2 - 0.8)	Monitor at 5 year intervals after baseline established
	Low-Low-Moderate (0.8 - 1.5)	Monitor at 5 year intervals after baseline established
Fair	Low-Moderate (1.5 - 2.2)	Monitor yearly. Initiate Evaluation & Response Plan
	Moderate (2.2 - 4.5)	Monitor yearly. Initiate Evaluation & Response Plan
Poor	High (4.5 - 7.0)	Monitor yearly. Initiate Evaluation & Response Plan
	Very High (>7.0)	Monitor yearly. Initiate Evaluation & Response Plan
Early Warning Trigger	Trend of increasing Macroalgae Coefficient	Initiate Evaluation and Response Plan

2. RESULTS, RATING AND MANAGEMENT

RESULTS



Figure 1 and Table 1 summarise the results of the 2010 macroalgal mapping of Fortrose Estuary. Across the vast majority of the estuary (194Ha, 91%), macroalgal cover was below 50%, with the highest densities of macroalgae growing predominantly in the well flushed lower intertidal reaches of the Central Basin and Eastern Flats. Nuisance conditions of anoxic muds and sulphide odours were uncommon and largely restricted to localised areas in the estuary where wind and current-deposited macroalgae accumulates (predominantly along the eastern shoreline).

The green alga *Enteromorpha* was the most common species in the estuary and dominated the red alga *Gracilaria* in all areas of the estuary, including subtidally. The most extensive macroalgal growths were in subtidal areas wherever substrate allowed macroalgae to gain a foothold, while *Enteromorpha* was most common intertidally along the edge of the river channel margins.

Table 1. Summary of macroalgal percentage cover results, February 2010.

MACROALGAE Percentage Cover	Fortrose (Toetoes) Estuary		
	Ha	%	Dominant species
<1%	59	27.4	-
1-5%	105	48.8	<i>Enteromorpha, Gracilaria</i>
5-10%	13	6.0	<i>Enteromorpha, Gracilaria</i>
10-20%	14	6.6	<i>Enteromorpha, Gracilaria</i>
20-50%	4	1.8	<i>Enteromorpha, Gracilaria</i>
50-80%	9	4.1	<i>Enteromorpha, Gracilaria</i>
>80%	11	5.3	<i>Enteromorpha, Gracilaria</i>
TOTAL	214	100	

Table 2. Summary of condition rating and results, 2009-10.

Year	Rating	MC	Result
2009	FAIR	1.8	Widespread growth in central basin and eastern side of estuary. Little growth in the west and across lower estuary, but localised concentrations of windblown algae.
2010	FAIR	1.2	Most macroalgal growth and localised concentrations of windblown algae located on the Eastern Flats. Little growth across the north, west or lower estuary flats.

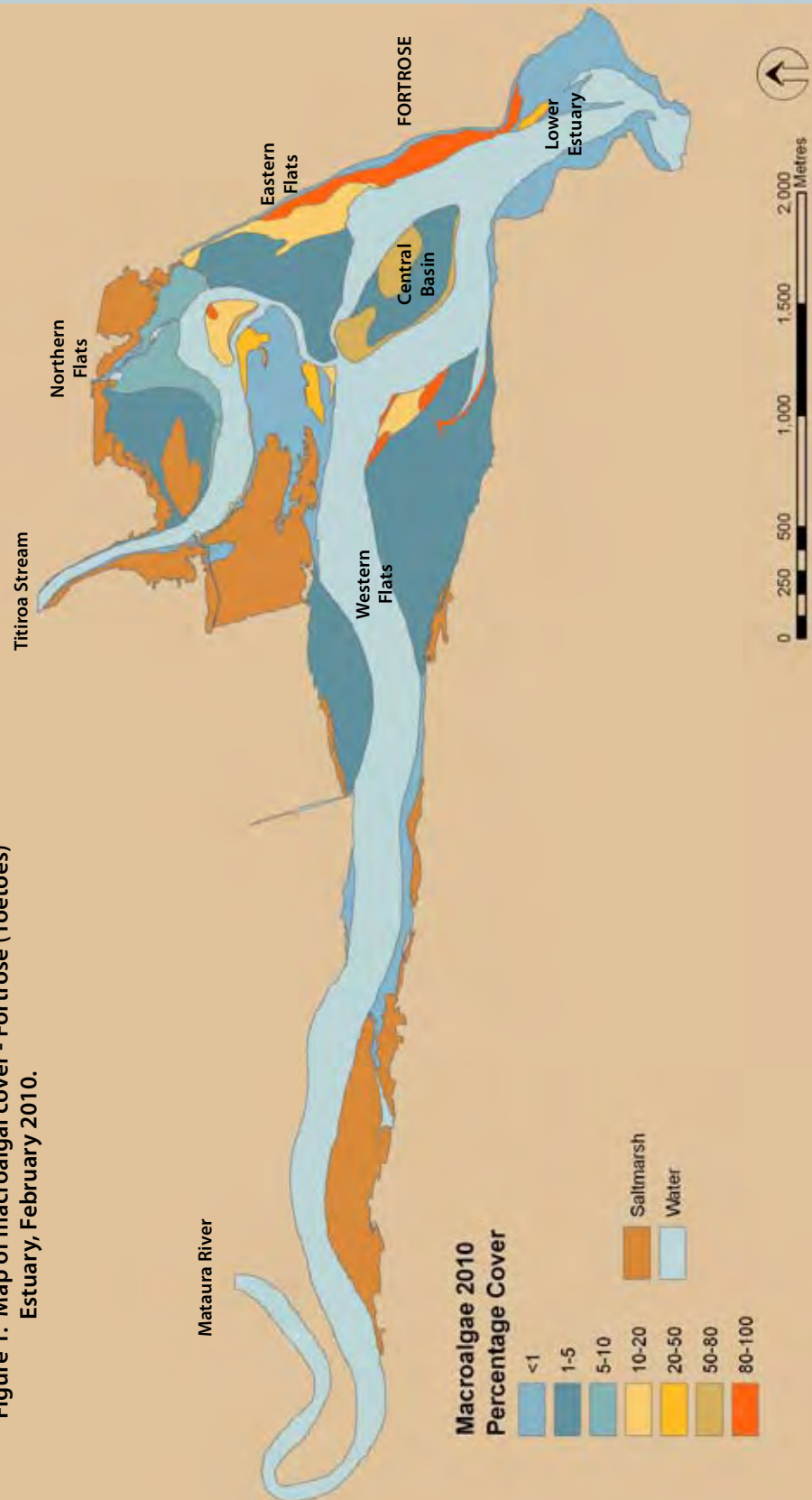
Table 2 summarises the Condition Rating and Macroalgal Coefficient (MC) results for the 2009-2010 period. Macroalgal cover decreased in the Central Basin and in the lower intertidal sections of the Northern and Eastern Flats from Feb. 2009-Feb. 2010, with the Macroalgae Coefficient (MC) reducing from 1.8 to 1.2. The reduction in the MC related to a decrease in the amount of the estuary with >80% cover, as well as an increase in areas with <5% cover. The condition rating remained "fair" because of >50% cover over >5% of the estuary. The decrease in the unusually high macroalgal growth observed in Fortrose Estuary during summer 2008/09, and the general absence of nuisance conditions is a positive sign. However, extensive growths of macroalgae in subtidal areas, which contribute to localised impacts where shoreline accumulations occur, require monitoring and management action.

2010 MACROALGAL COVER
CONDITION RATING

FAIR

2. Results, Rating and Management (Continued)

Figure 1. Map of macroalgal cover - Fortrose (Toetoes) Estuary, February 2010.



2. Results, Rating and Management (Continued)

RESULTS	<p>This extensive subtidal growth present in the estuary is driven by the high nutrient loads entering the estuary (estimated N load 2,500 tonnesN/yr based on NIWA's WRENZ model). Because the estuary is relatively small in comparison to the very large freshwater inflow (mean flow 76m³/s), most of the N inflow is rapidly flushed out to sea. However, the high N inputs support excessive growths of nuisance macroalgae in areas close to the main channel (i.e. areas exposed to elevated nutrient concentrations and low salinity conditions). The nuisance macroalgae is usually <i>Enteromorpha</i>, which is very tolerant of low salinity, and these growths can break away and be transported to other areas of the estuary through wind and current action. At present, extensive growths of macroalgae in subtidal areas of Fortrose Estuary reflect the estuary's response to high nutrient inputs. Consequently, setting limits on nutrient inputs, and the identification and management of nutrient sources is considered a priority.</p>
CONCLUSION	<p>2010 macroalgal cover had a condition rating of "fair", with the highest densities of macroalgae in subtidal channels, and in the central basin and eastern side of the estuary. Nuisance conditions of anoxic muds and sulphide odours were uncommon away from localised areas associated with high cover or windblown accumulations of macroalgae.</p>
RECOMMENDED MONITORING AND MANAGEMENT	<p>The condition rating triggers annual monitoring to allow for any deterioration of sediment quality to be assessed. In addition, the following management is recommended:</p> <p>Set Limits on Nutrient Inputs</p> <ul style="list-style-type: none"> Nutrient inputs to Fortrose Estuary are high, are strongly related to eutrophication symptoms (Robertson and Stevens 2008), and macroalgal growth had recently accelerated and was widespread throughout the central basin and eastern side of the estuary. Further work is needed before a definitive limit can be set, but inputs need to be reduced below current levels to achieve a more moderately enriched estuary and to protect it from further degradation. <p>Identify and Manage Major Nutrient Sources</p> <ul style="list-style-type: none"> The identification of nutrient sources to the estuary is seen as a priority given the very significant nature of both point and non-point discharges. Once identified, a plan should be developed to prioritise and reduce the key inputs.

3. REFERENCES

Southland Coastal Monitoring Reports	<p>Robertson, B.M., Gillespie, P.A., Asher, R.A., Frisk, S., Keeley, N.B., Hopkins, G.A., Thompson, S.J., Tuckey, B.J. 2002. <i>Estuarine Environmental Assessment and Monitoring: A National Protocol. Part A. Development, Part B. Appendices, and Part C. Application. Prepared for supporting Councils and the Ministry for the Environment, Sustainable Management Fund Contract No. 5096. Part A. 93p. Part B. 159p. Part C. 40p plus field sheets.</i></p> <p>Robertson, B.M., and Stevens, L.M. 2010. <i>New River Estuary Fine Scale Monitoring 2009/10. Report prepared by Wriggle Coastal Management for Environment Southland.</i></p> <p>Robertson, B.M., and Stevens, L.M. 2010. <i>Freshwater Estuary Fine Scale Monitoring 2009/10. Report prepared by Wriggle Coastal Management for Environment Southland.</i></p> <p>Robertson, B.M., and Stevens, L.M. 2010. <i>Haldane Estuary Fine Scale Monitoring 2009/10. Report prepared by Wriggle Coastal Management for Environment Southland.</i></p> <p>Robertson, B.M., and Stevens, L.M. 2010. <i>Porpoise Bay Fine Scale Monitoring 2009/10. Report prepared by Wriggle Coastal Management for Environment Southland.</i></p>
---	---

3. References (Continued)

- Robertson, B.M., and Stevens, L.M. 2009. *Freshwater Estuary Fine Scale Monitoring 2008/09*. Report prepared by Wriggle Coastal Management for Environment Southland. 25p.
- Robertson, B.M., and Stevens, L.M. 2009. *Fortrose (Toetoes) Estuary Fine Scale Monitoring 2008/09*. Report prepared by Wriggle Coastal Management for Environment Southland. 9p.
- Robertson, B.M., and Stevens, L.M. 2009. *Haldane Estuary Fine Scale Monitoring 2008/09*. Report prepared by Wriggle Coastal Management for Environment Southland. 9p.
- Robertson, B.M. and Stevens, L.M. 2009. *Waimatuku Estuary 2009 Synoptic Survey, Macrophyte Mapping and Vulnerability Assessment*. Report prepared by Wriggle Coastal Management for Environment Southland. 20p.
- Robertson, B.M. and Stevens, L.M. 2009. *Waiau Lagoon 2009 Synoptic Survey, Macrophyte Mapping and Vulnerability Assessment*. Report prepared by Wriggle Coastal Management for Environment Southland. 20p.
- Robertson, B.M. and Stevens, L.M. 2009. *Lake Brunton 2009 Synoptic Survey, Macrophyte Mapping and Vulnerability Assessment*. Report prepared by Wriggle Coastal Management for Environment Southland. 17p.
- Robertson, B.M. and Stevens, L.M. 2009. *Waituna Lagoon 2009. Macrophyte (Ruppia) Monitoring*. Prepared for Department of Conservation. 19p.
- Robertson, B.M. and Stevens, L.M. 2008. *Southland Coast - Te Waewae Bay to the Catlins, habitat mapping, risk assessment and monitoring recommendations*. Report prepared for Environment Southland. 165p.
- Robertson, B.M., and Stevens, L.M. 2008. *Waikawa Estuary Fine Scale Monitoring 2007/08*. Report prepared by Wriggle Coastal Management for Environment Southland. 32p.
- Robertson, B.M., and Stevens, L.M. 2007. *New River Estuary 2007 Broad Scale Habitat Mapping and Sedimentation Rate*. Report prepared by Wriggle Coastal Management for Environment Southland. 34p.
- Robertson, B.M., and Stevens, L.M. 2007. *Waikawa Estuary 2007 Fine Scale Monitoring and Historical Sediment Coring*. Report prepared by Wriggle Coastal Management for Environment Southland. 29p.
- Robertson B.M., Asher, R. 2006. *Environment Southland Estuary Monitoring 2006*. Prepared for Environment Southland.
- Robertson, B.M., and Stevens, L.M. 2006. *Southland Estuaries State of Environment Report 2001-2006*. Prepared for Environment Southland.
- Robertson B.M., Asher R., Sneddon R. 2004. *Environment Southland Estuary Monitoring 2004*. Prepared for Environment Southland.
- Robertson, B.M., Stevens, L.M., Thompson, S., and Robertson, B. 2004. *Broad scale intertidal habitat mapping of Awarua Bay*. Prepared for Environment Southland.
- Robertson, B.M., Stevens, L.M., Thompson, S., and Robertson, B. 2004. *Broad scale intertidal habitat mapping of Bluff Harbour*. Prepared for Environment Southland.
- Robertson, B.M., Stevens, L.M., Thompson, S., and Robertson, B. 2004. *Broad scale intertidal habitat mapping of Waikawa Estuary*. Prepared for Environment Southland.
- Robertson B.M., and Asher R. 2003. *Environment Southland Estuary Monitoring 2003*. Prepared for Environment Southland.
- Robertson B.M., Tuckey B.J., and Robertson B. 2003. *Broadscale mapping of Jacobs River Estuary intertidal habitats*. Prepared for Environment Southland.
- Robertson B.M., Tuckey B.J., and Robertson B. 2003. *Broadscale mapping of Fortrose Estuary intertidal habitats*. Prepared for Environment Southland.
- Robertson, B.M. 1997. *Southland Coastal Ecology Programme 1996-7*. Report prepared for Southland Regional Council. Barry Robertson, Environmental Consultant, Nelson. 50p.
- Robertson, B.M. 1995. *Southland Estuaries: heavy metal monitoring*. Report prepared for the Southland Regional Council. Robertson Ryder & Associates, Dunedin. 35p.
- Robertson, B.M. 1992. *Aparima Catchment Water Quality Review*. Report prepared for the Southland Regional Council. Barry Robertson & Associates, Dunedin. 67p.
- Robertson, B.M. 1992. *New River Estuary: Review of Existing Water Quality*. Report prepared for Southland Regional Council. Barry Robertson & Assoc, Dunedin. 76p.
- Stevens, L.M., and Robertson, B.M. 2010. *Fortrose (Toetoe) Estuary. Macroalgal Monitoring 2009/10*. Report prepared by Wriggle Coastal Management for Environment Southland. 6p.
- Stevens, L.M., and Robertson, B.M. 2010. *Jacobs River Estuary. Macroalgal Monitoring 2009/10*. Report prepared by Wriggle Coastal Management for Environment Southland. 7p.
- Stevens, L.M. and Robertson, B.M. 2010. *New River Estuary. Macroalgal Monitoring 2009/10*. Report prepared by Wriggle Coastal Management for Environment Southland. 7p.
- Stevens, L.M. and Robertson, B.M. 2010. *Waimatuku Estuary 2010 Synoptic Survey, Macrophyte Mapping and Vulnerability Assessment*. Report prepared by Wriggle Coastal Management for Environment Southland.

3. References (Continued)

- Stevens, L.M. and Robertson, B.M. 2010. *Waiiau Lagoon 2010 Synoptic Survey, Macrophyte Mapping and Vulnerability Assessment*. Report prepared by Wriggle Coastal Management for Environment Southland.
- Stevens, L.M. and Robertson, B.M. 2010. *Stirling Point Rocky Shore Fine Scale Monitoring 2009/10*. Report prepared by Wriggle Coastal Management for Environment Southland.
- Stevens, L.M., and Robertson, B.M. 2009. *Fortrose (Toetoe) Estuary. Macroalgal Monitoring 2008/09*. Report prepared by Wriggle Coastal Management for Environment Southland. 5p.
- Stevens, L.M., and Robertson, B.M. 2009. *Jacobs River Estuary. Macroalgal Monitoring 2008/09*. Report prepared by Wriggle Coastal Management for Environment Southland. 5p.
- Stevens, L.M. and Robertson, B.M. 2009. *New River Estuary. Macroalgal Monitoring 2008/09*. Report prepared by Wriggle Coastal Management for Environment Southland. 5p.
- Stevens, L.M. and Robertson, B.M. 2008. *Waiiau Lagoon. Broad Scale Habitat Mapping 2007/08*. Report prepared by Wriggle Coastal Management for Environment Southland. 19p.
- Stevens, L.M. and Robertson, B.M. 2008. *Freshwater Estuary. Broad Scale Habitat Mapping 2007/08*. Report prepared by Wriggle Coastal Management for Environment Southland. 24p.
- Stevens, L.M. and Robertson, B.M. 2008. *New River Estuary. Macroalgal Monitoring 2007/08*. Report prepared by Wriggle Coastal Management for Environment Southland. 5p.
- Stevens, L.M. and Robertson, B.M. 2008. *Jacobs River Estuary. Broad Scale Habitat Mapping 2007/08*. Report prepared by Wriggle Coastal Management for Environment Southland. 31p.
- Stevens, L.M. and Robertson, B.M. 2007. *Jacobs River Estuary 2007. Macroalgal monitoring*. Report prepared by Wriggle Coastal Management for Environment Southland. 4p.
- Stevens, L.M. and Robertson, B.M. 2007. *Waituna Lagoon 2007. Broad Scale Habitat Mapping and Historical Sediment Coring*. Report prepared by Wriggle Coastal Management for Environment Southland. 36p.
- Stevens, L.M. and Robertson, B.M. 2007. *Waituna Lagoon 2007. Ecological Vulnerability Assessment and Monitoring Recommendations*. Report prepared by Wriggle Coastal Management for Environment Southland. 40p.
- Stevens, L.M., and Asher, R. 2005. *Broad scale intertidal habitat mapping of Haldane Estuary*. Prepared for Environment Southland.
- Stevens, L.M., and Asher, R. 2005. *Environment Southland Estuary Monitoring 2005*. Prepared for Environment Southland.
- Stevens, L.M., and Clarke, M. 2004. *Broad scale mapping of subtidal habitat and ecology of Bluff Harbour, 2004*. Prepared for Environment Southland.