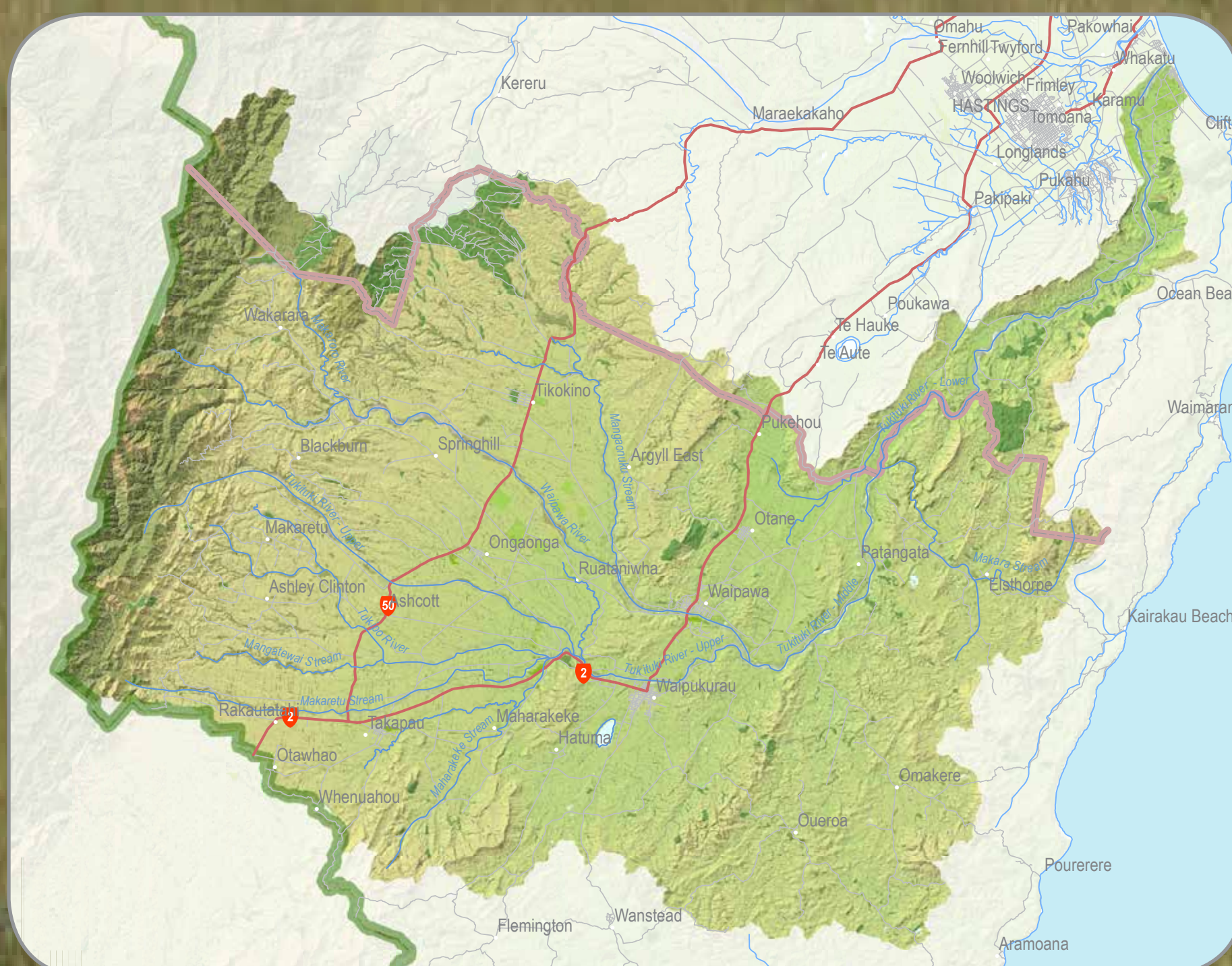


TUKITUKI Farm Environmental Management Plans (FEMPS)

SUCCESSSES AND STRUGGLES

Tukituki River Catchment Plan Change 6 (The Tukituki Plan) is Hawke's Bay Regional Council's first plan change under the National Policy Statement for Freshwater (NPS-FW). It became operative in October 2015.



The challenge: To complete 1100 FEMPs between October 2015 and May 2018

- HBRC did not have the resources to complete all 1100 FEMPs and there were a limited number of external providers in Hawke's Bay
- There were no systems and processes in place to enable FEMPs to be completed, or deal with completed FEMPs
- The Tukituki plan does not provide a way to collect FEMPs
- Farmers were unaware they were in the Tukituki catchment so assumed it did not apply
- The Ruataniwha dam confused the plan change process

How are Hawke's Bay Regional Council tackling this?

Building FEMP provider capacity:

- Provider days and on farm mentoring with a focus on phosphorous management and critical source area identification
- Approved Provider Scheme which includes a review of several FEMPs
- Regular email contact
- Recent external review to help strengthen and streamline the approval process. Approved providers gave feedback on the current system

Focusing on priority sub-catchments:

- Priority sub-catchments are those significantly above their instream DRP targets
- Integrated Catchment Management approach used to support these farmers
- Subsidised FEMPs
- Intensive communications: face to face visits, phone calls, factsheets and letters

Exploration of different pathways for farmers:

- Personalised FEMPs created by approved providers
- Industry schemes- Beef and Lamb FEMP Workshops, DairyNZ Sustainable Milk Plans and FAR workshops
- Option to complete FEMP as catchment club
- Investigated "FEMP-lite" for lifestyle blocks (unsuccessful)

Communications efforts to raise awareness:

- Letters
- Billboards
- Radio ads
- Newspaper articles
- Website

What is next for FEMP implementation in the Tukituki River catchment?

- 200 plans complete to date
- Commencement of an auditing and accreditation scheme to ensure FEMPs are fit for purpose
- Development of auditing/compliance checking process
- Communications moving into a compliance message
- Encouragement of farmers to go beyond the bare minimum (complying with regulation) both when creating and implementing - this will be the only way to be successful in meeting water quality targets
- Continue the non-regulatory implementation measures outlined in The Tukituki Plan to help work towards the desired water quality.