

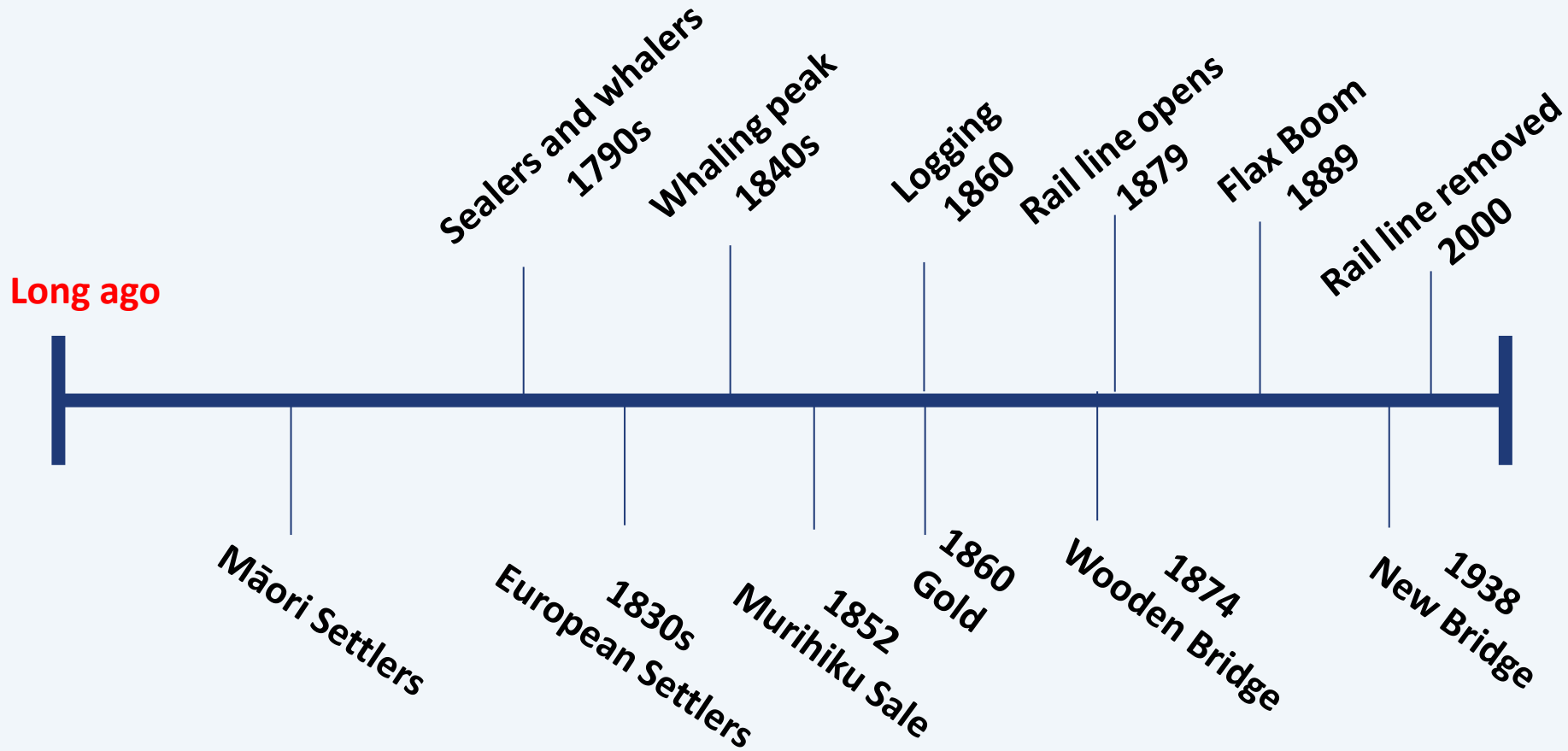


# Aparima

Nick Ward



# Time Line







Boat Sheds South Riverton

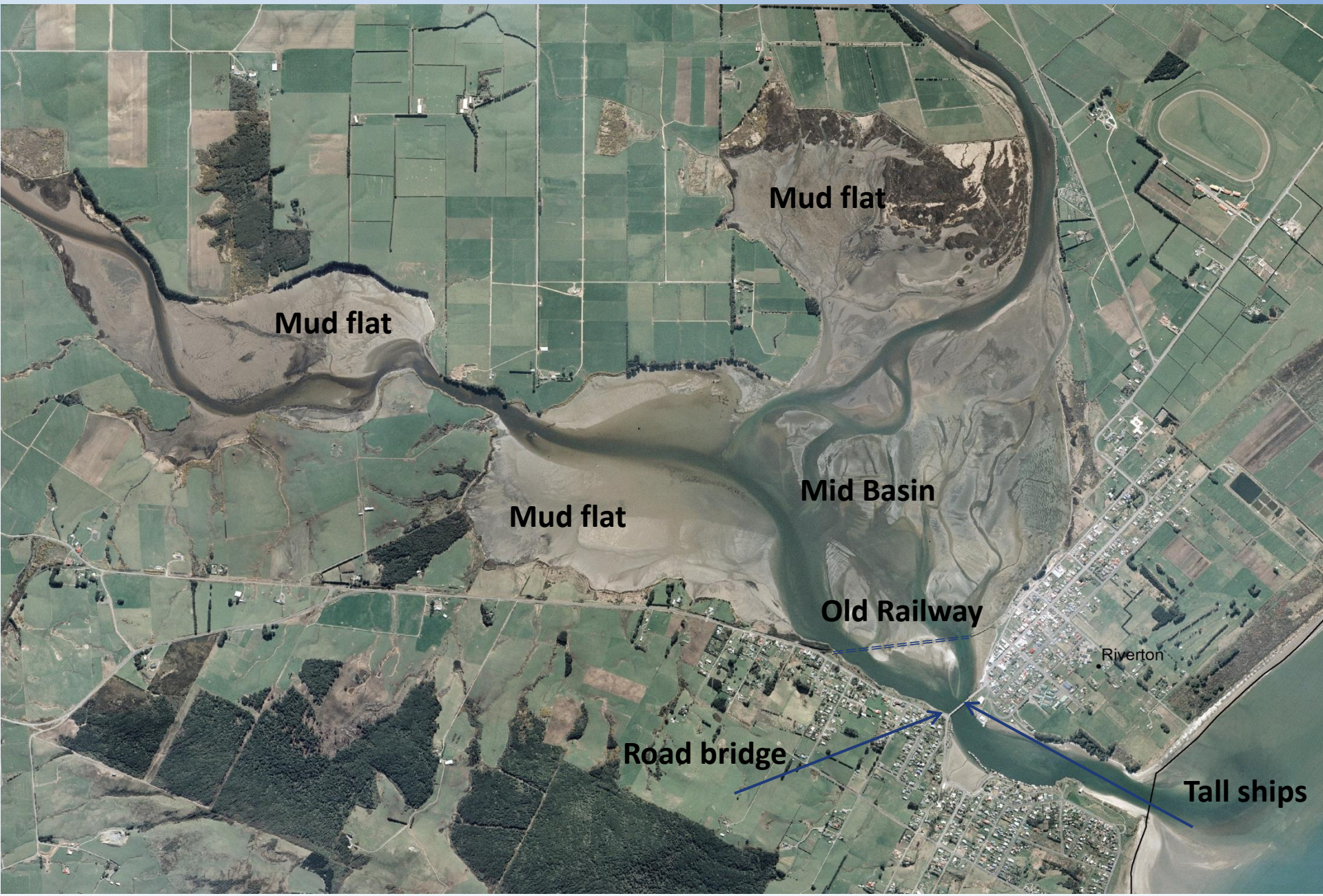




Some things  
don't change!



# Aparima/Jacob's River Estuary



Mud flat

Mud flat

Mud flat

Mid Basin

Old Railway

Riverton

Road bridge

Tall ships



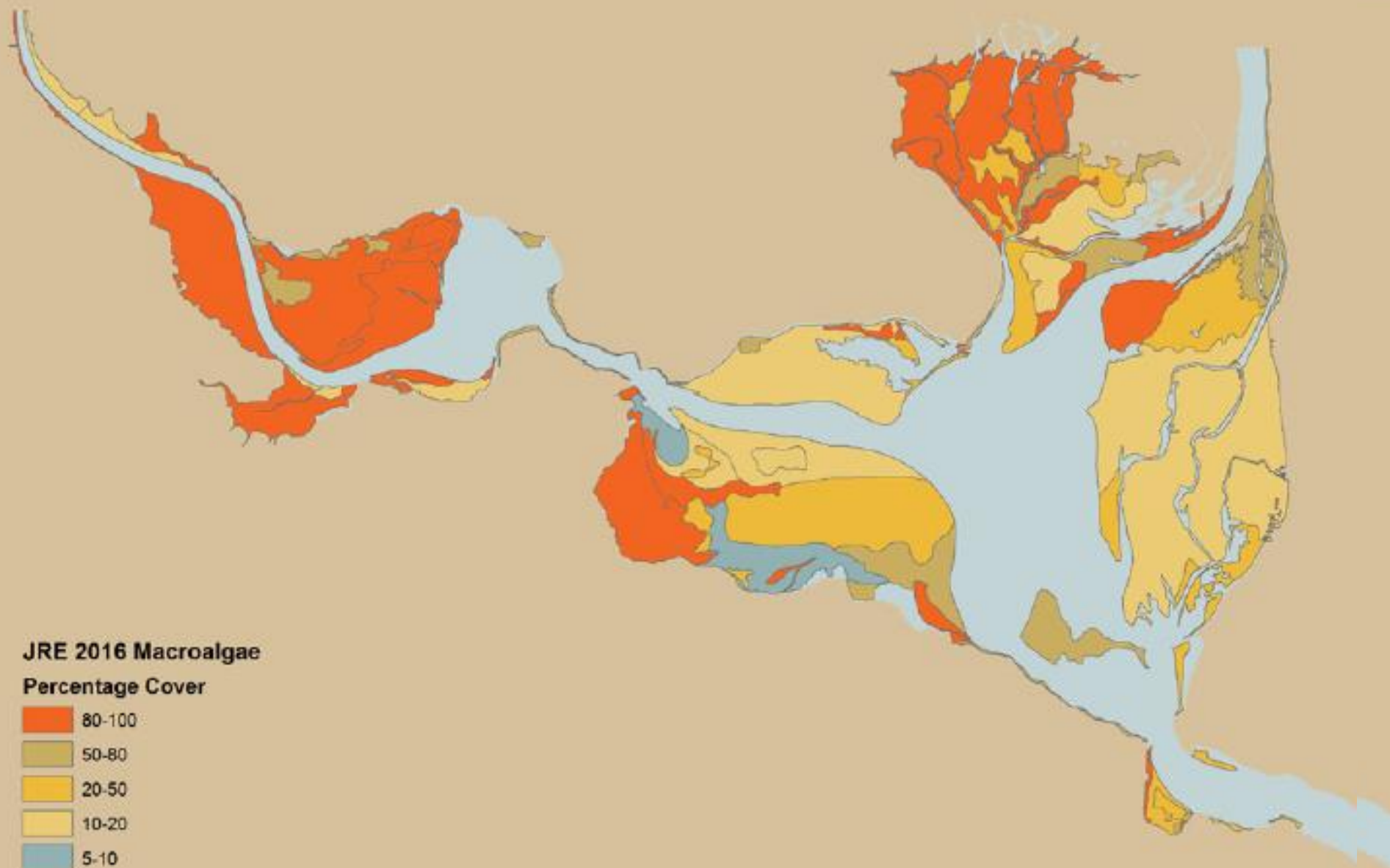
# Nuisance Macroalgae



*Gracilaria chilensis* (brown algae)

## **Luxurious growth of Gracilaria beds**





**JRE 2016 Macroalgae**

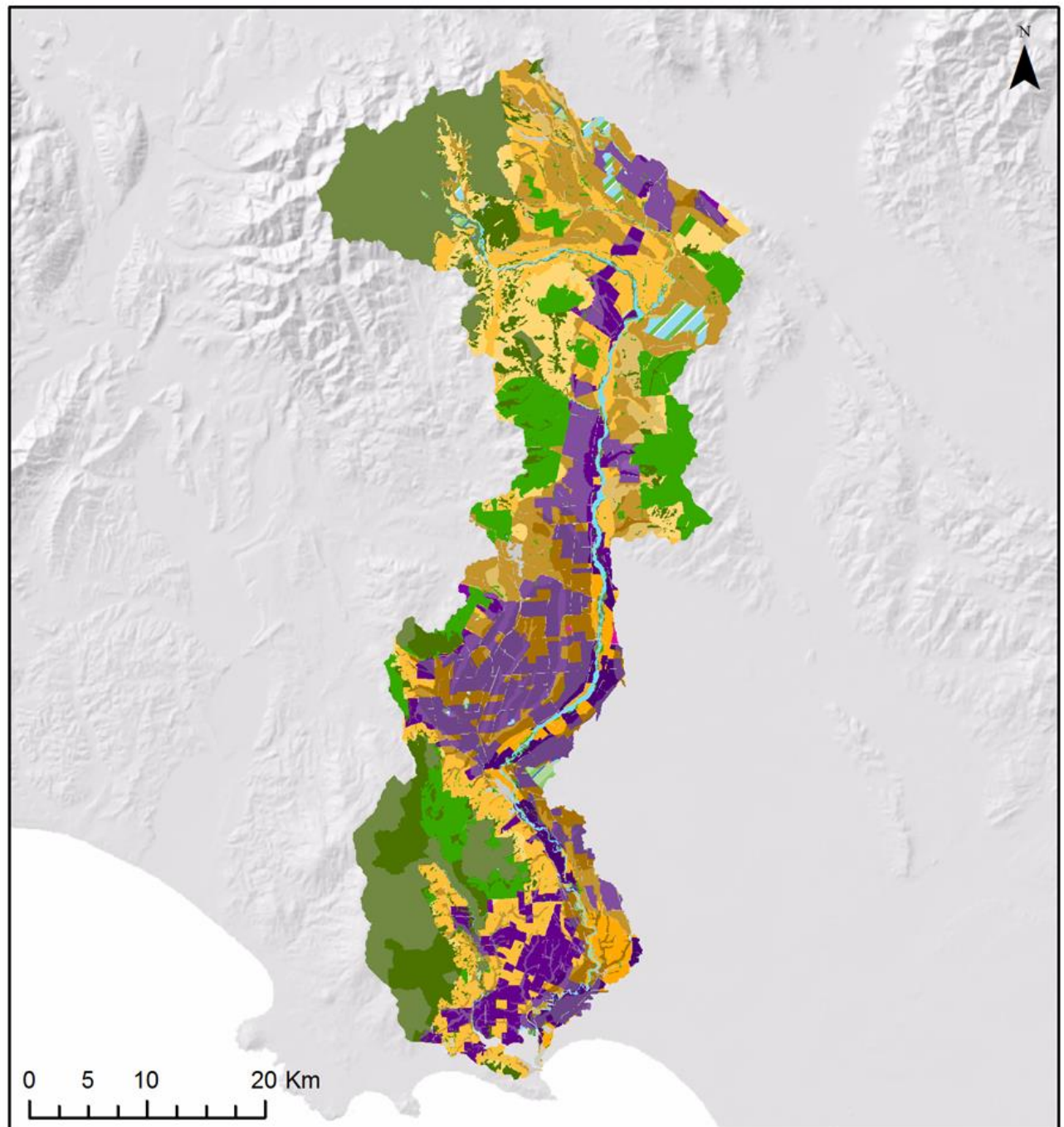
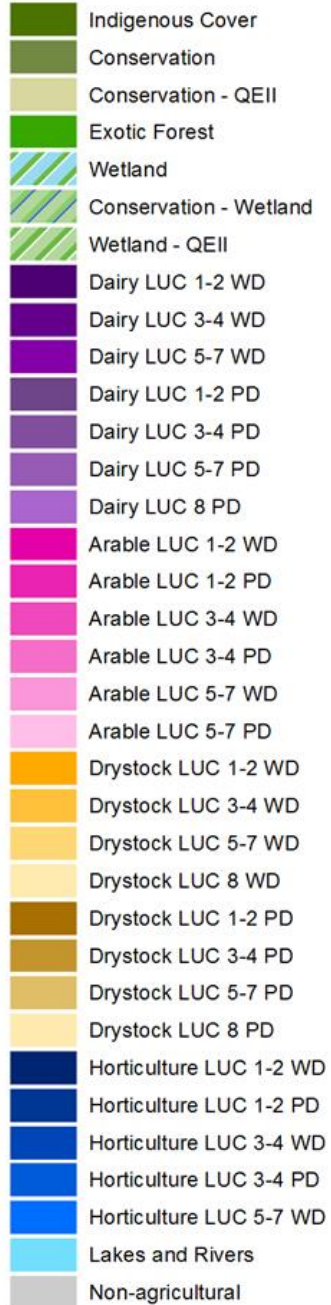
**Percentage Cover**

- 80-100
- 50-80
- 20-50
- 10-20
- 5-10

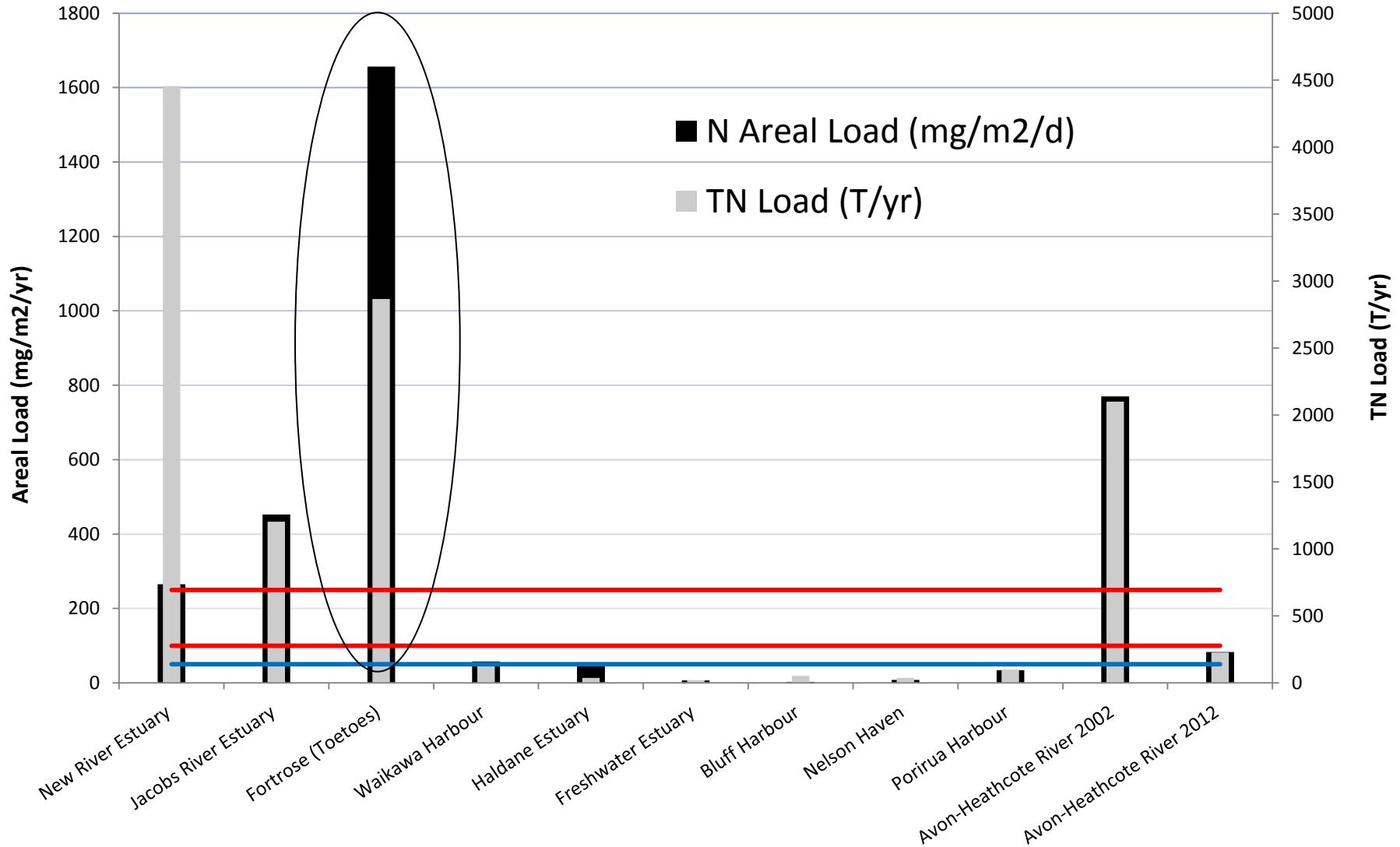
# Jacob's River Estuary



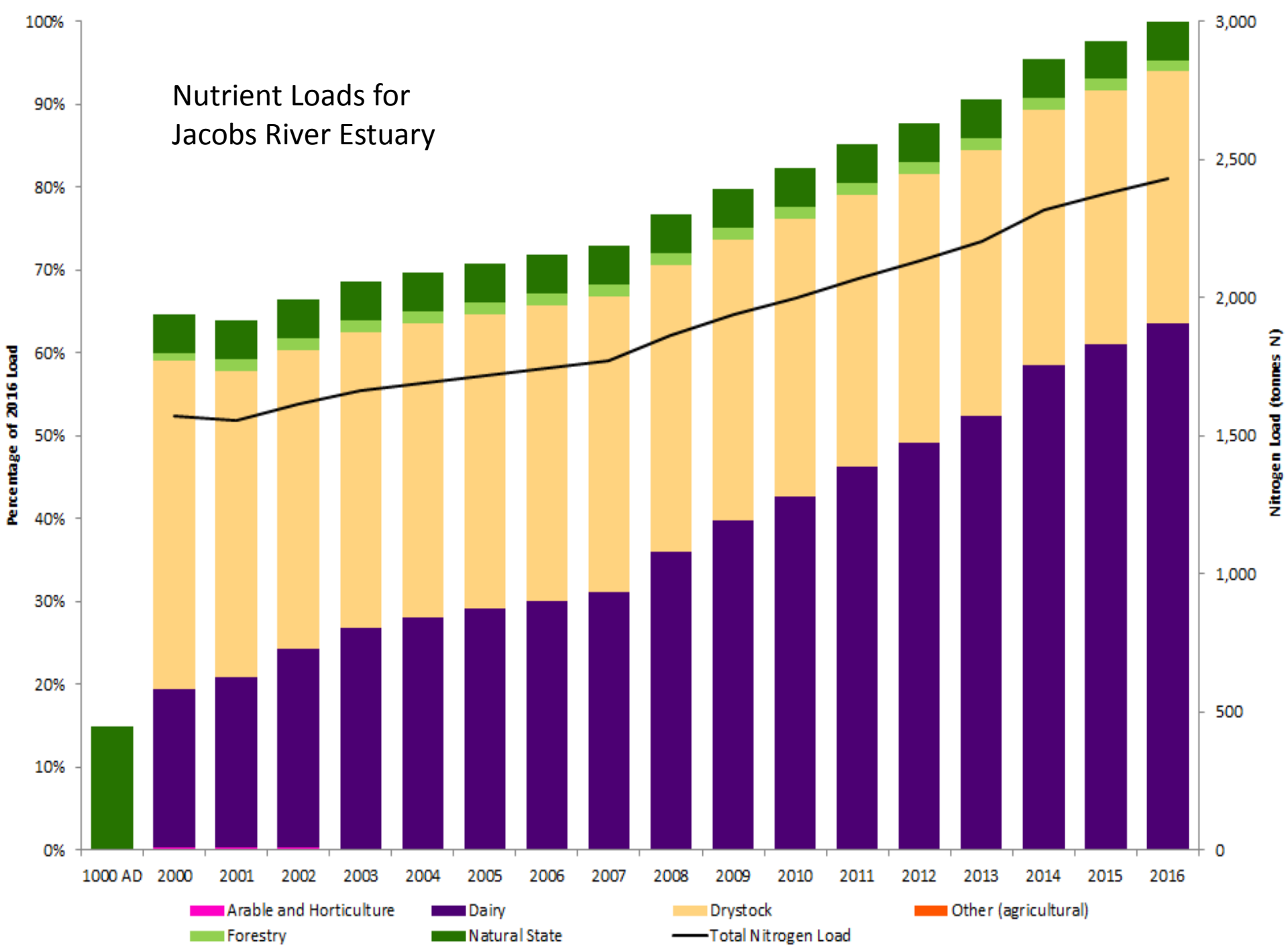
## Land Use 2015



# Loads to Estuaries



# Nutrient Loads for Jacobs River Estuary



Leadership requires the courage to  
make decisions that will benefit the  
next generation.