



For now &
our future

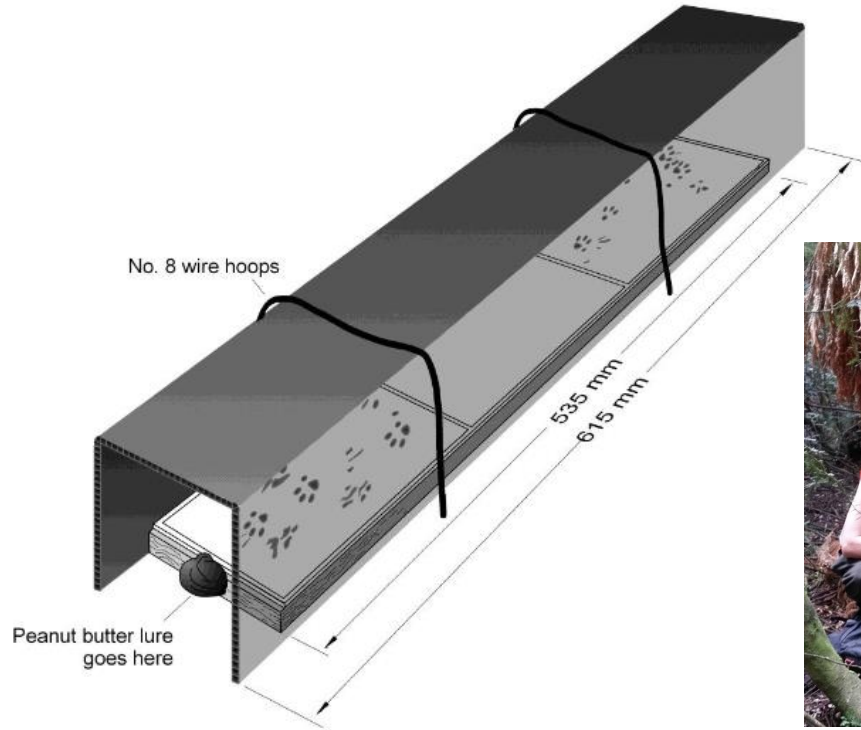
Number crunching for community conservation

Tom Harding *Biosecurity officer - monitoring and information management*

Overview

- What does Environment Southland do?
 - Monitoring methods
- Who do we do it for?
 - Volunteer community groups
- Why do we do it?

Rodent monitoring



Possum monitoring



Residual trap catch



Waxtags

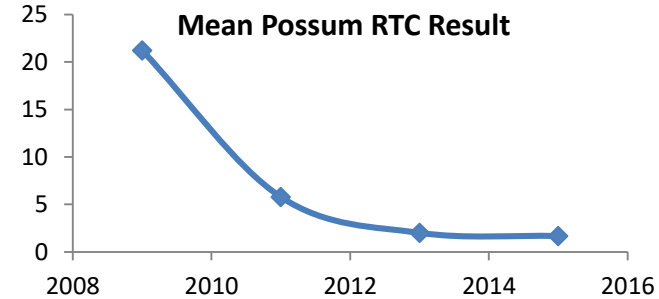
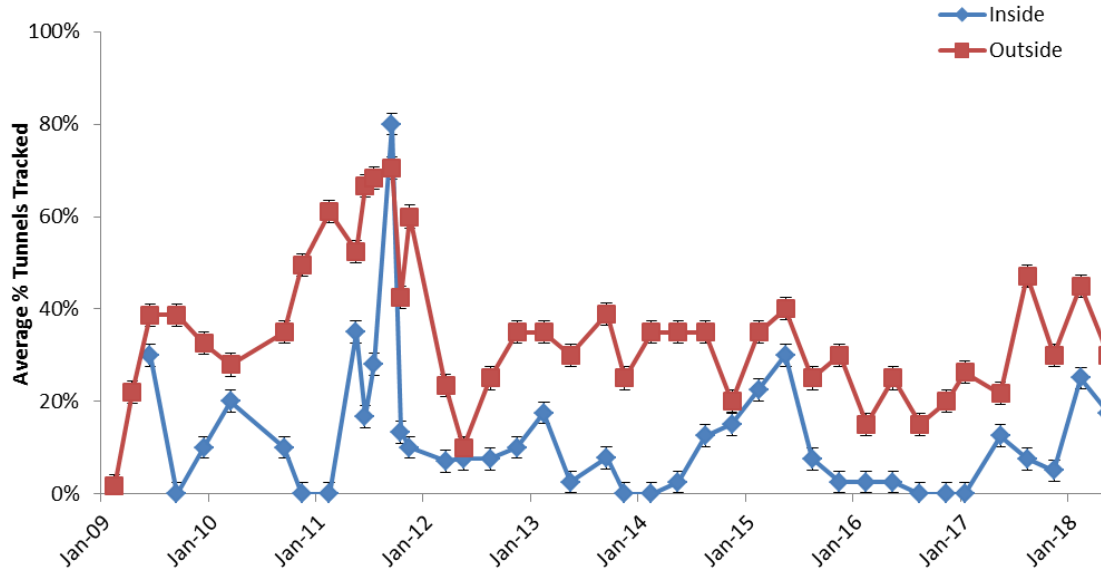


Bird monitoring



Bluff Hill/Motopōhue Environment Trust

Bluff Hill Comparison of Rat Tracking Inside and Outside Pest Control Area



Bluff Hill/Motopōhue Environment Trust

From: Bluff Enviro Trust <bluffenvirotrust@yahoo.co.nz>
To: Tom Harding
Cc: Debbie Fife; Nikki Ladd; Annichje Riemersma; Ali Meade
Subject: Re: Feb Rodent results

Sent: Wed 28/02/2018 5:02 p.m.

Kia ora Tom,

Thanks very much for the results, it is a bit of a spike, I had a feeling they were creeping in, been quite a few reports from volunteers of trap catches increasing.

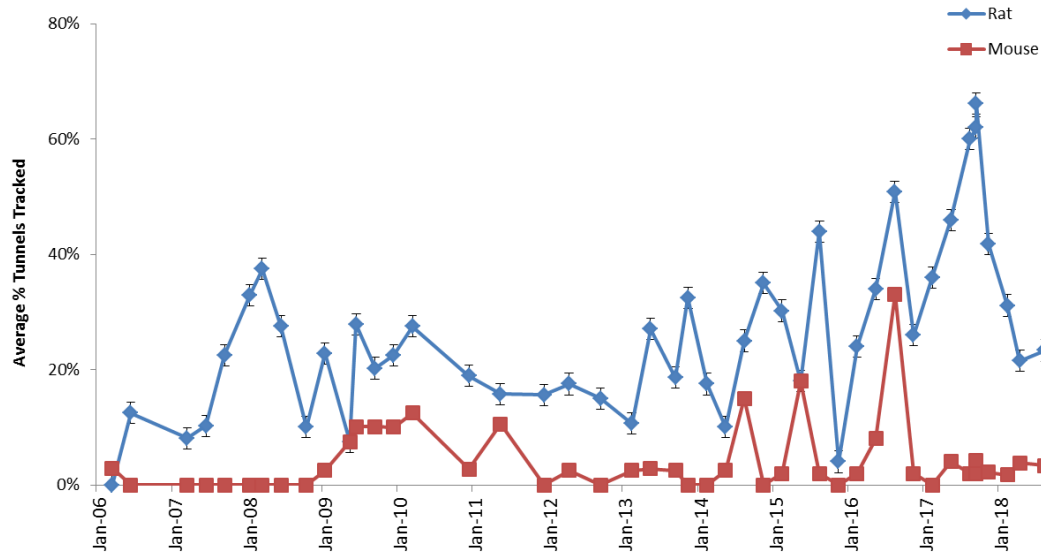
We'll start preparing for a pulse before we stop our regular poisoning regime in May.

Nga mihi
Estelle

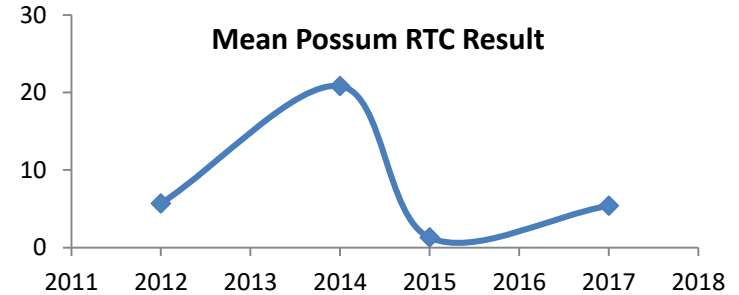


Omaui Landcare Charitable Trust

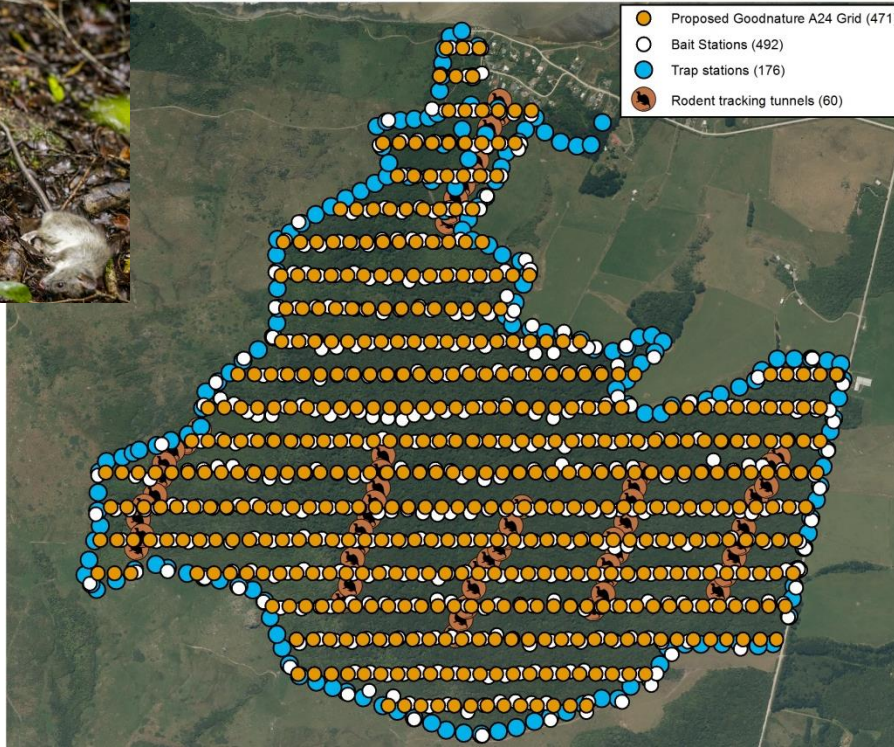
Omaui Reserve rodent tracking tunnel indices



Mean Possum RTC Result



Omaui Landcare Charitable Trust



Summary

Directly linking science to the community results in:

- Inspiration for volunteers
- Positive relationships with the public
- Positive biodiversity change