

2015/16

Aparima Catchment

Compliance monitoring report summary

Dairy consent compliance*

Full compliance **89%**

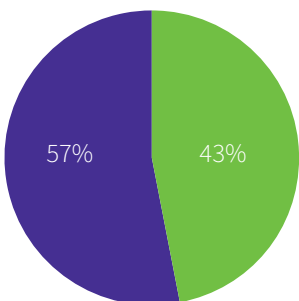
Minor non-compliance **10%**

Significant non-compliance **1%**

*Assessment of compliance includes all aerial and on-farm inspections.

Industry consent compliance*

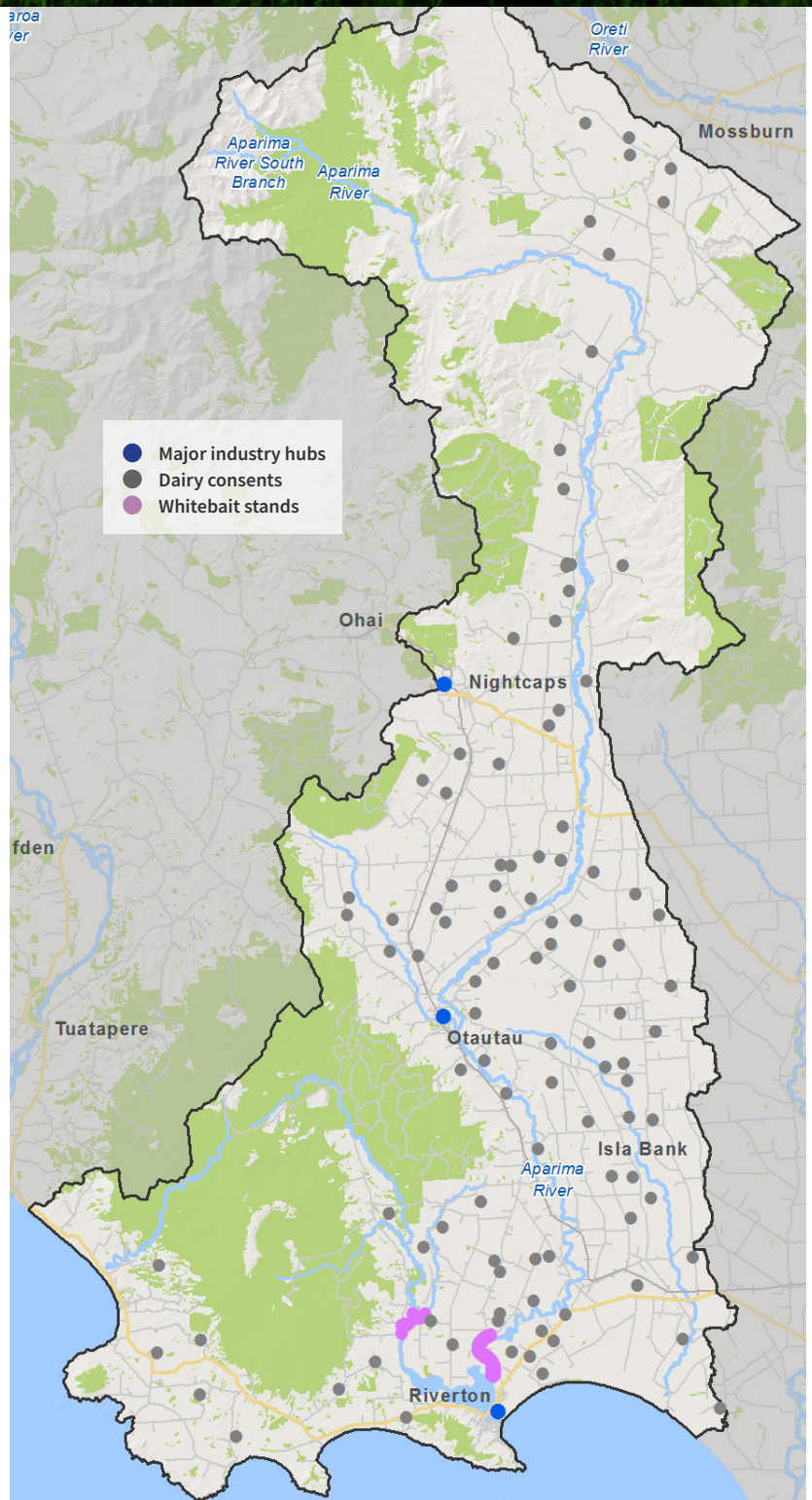
- Good to excellent
- Moderate to technical issues
- Significant non-compliance



*Assessment of compliance includes industry and council sewerage systems overall performance against consent conditions.

Whitebait stand compliance

Full compliance **79%**



The Aparima catchment in numbers

- ▶ is over 1120 km²
- ▶ has five rainfall gauges and 10 river level recorders
- ▶ has 996mm of average annual rainfall at Middle Creek
- ▶ highest recorded flood was on the Aparima River at Otautau was on 27 January 1984 and measured 1164 cumecs, 3.65m above normal
- ▶ lowest recorded river level was 0.895 cumecs at the Aparima River at Thornbury on 17 February 1971
- ▶ has 88kms of stop banks to protect people, property and livelihoods

Meet your compliance officer



Michelle Te Maro (Waituna)

Michelle has worked for Environment Southland since January 2009. Starting as a contactor, Michelle initially covered compliance with all kinds of activities, from dairy to coastal, just about anywhere in Southland.

More recently, her focus has been on western Southland, and on the dairy activities in that area. In a normal day she could visit six different consent holders. She also plays a key part in the incident response team roster for our 24-hour pollution hotline.

Michelle is credited with initiating the 'shed talk' programme, which she puts down to 'wanting to talk to people'. Michelle admits she's a people-person and enjoys being out and about.

Outside of work Michelle has recently started her own small business – 'Simply Kai – Vintage Caravan', a mobile café/bar for hire. She says it's been a dream of hers and a labour of love - and "a sweet distraction from work".

The full 2015/16 Compliance Monitoring Report is available online at www.es.govt.nz

Shed | talks

A new tool used by compliance staff helps to reduce risks to the environment, while also breaking down some of the myths about compliance officers.

Aptly named, 'shed talks' were an idea of compliance officer Michele Te Maro, who saw the value in going through the requirements of an effluent discharge consent together with consent holders, managers and other farm staff in a setting they are comfortable in – their shed.

The aim of a shed talk is to provide a better understanding of the conditions set out in the consent, and to point out spots on the farm where there is a higher risk of effluent reaching waterways.

A team of five officers spend a large part of their day in the 'off season' encouraging, educating and enabling farmers to work within their consent conditions. Shed talks are also a useful tool for the induction for new staff to the farm.

Shed talks are free. If you'd like to take advantage of this service, then contact us on the details below.

Places each season are limited.