

2015/16

Mataura Catchment

Compliance monitoring report summary

Dairy consent compliance*

Full compliance **81%**

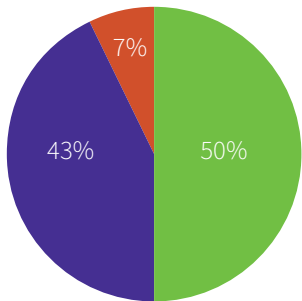
Minor non-compliance **14%**

Significant non-compliance **5%**

*Assessment of compliance includes all aerial and on-farm inspections.

Industry consent compliance*

- Good to excellent
- Moderate to technical issues
- Significant non-compliance

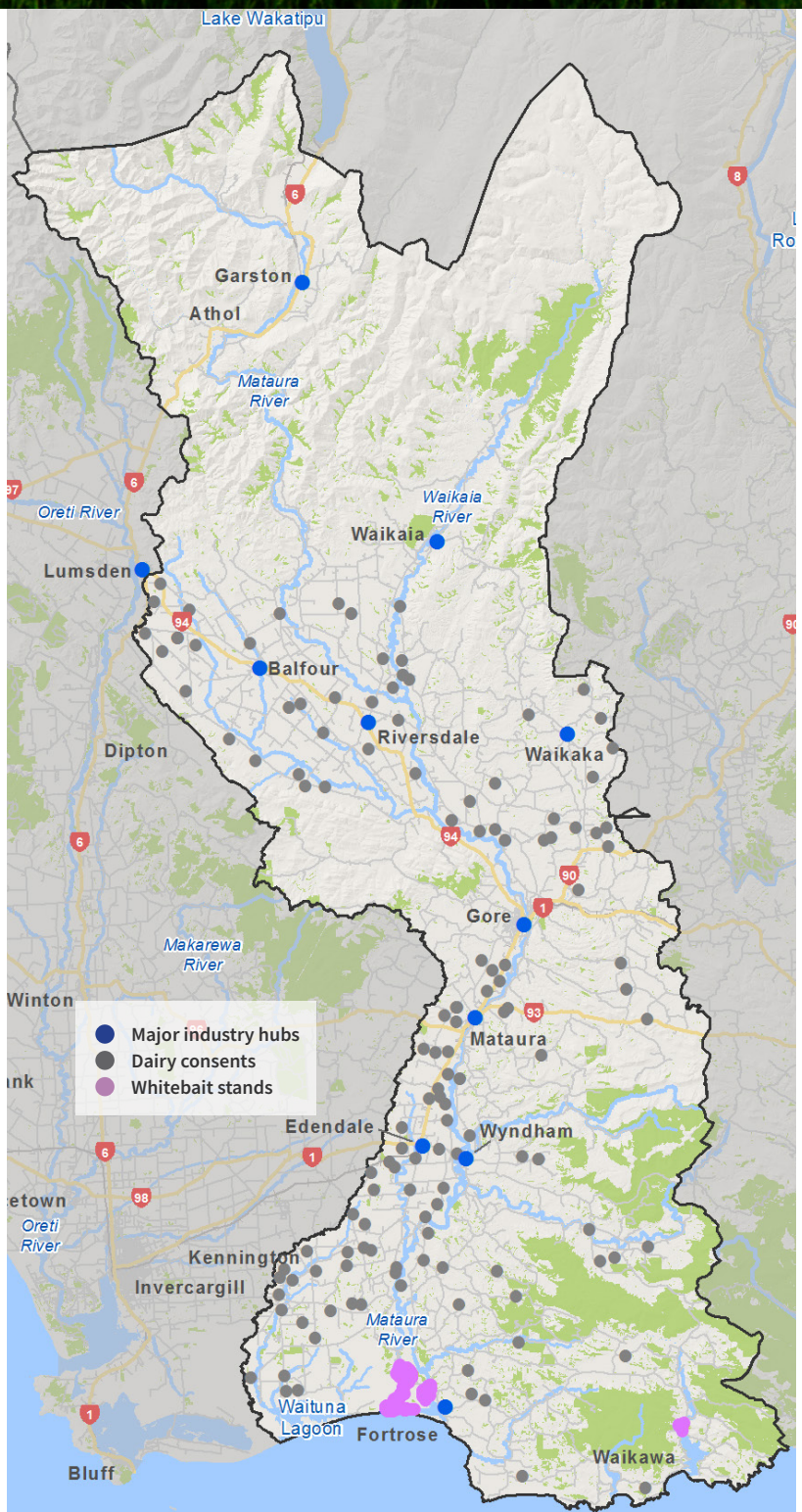


*Assessment of compliance includes industry and council sewerage systems overall performance against consent conditions.

Whitebait stand compliance

Titiroa full compliance **79%**

Waikawa full compliance **69%**



The Maitara catchment in numbers

- ▶ is over 3500 km²
- ▶ has 10 rainfall gauges and 16 river level recorders
- ▶ has 1189mm of average annual rainfall at the Mokoreta River at Mt Alexander
- ▶ highest recorded flood was on the Maitara River at Gore was on 14 October 1978 and measured 2297 cumecs, 4.69m above normal
- ▶ lowest recorded river level was 6.2 cumecs at the Maitara River at Tuturau on 15 March 1956
- ▶ has 113kms of stop banks to protect people, property and livelihoods

Meet your compliance officers



▶ Jake Bootsma

▶ Michelle Te Maro

▶ Aurora Grant

▶ Melissa Washbourne

Jake Bootsma (Maitara)

Jake is the newest member of the Compliance team, starting as a summer student helping with the whitebait stand inspections, before securing a permanent role around five months ago. Jake spends most of his day inspecting discharge consents, mostly for dairy farms in the Maitara area, as well as all the paper work that goes along with those. He is a member of the incident response team for our 24-hour pollution hotline and in the off season he carries out inspections for other types of discharge consents. In his role, Jake particularly enjoys meeting new people and being able to contribute to improved environmental outcomes. He also loves the variety of work, as no two days are the same.

Michelle Te Maro (Waituna)

Michelle has worked for Environment Southland since January 2009. Starting as a contactor, Michelle initially covered compliance with all kinds of activities, from dairy to coastal, just about anywhere in Southland. More recently, her focus has been on western Southland, and on the dairy activities in that area. In a normal day she could visit six different consent holders. She also plays a key part in the incident response team for our 24-hour pollution hotline. Michelle is credited with initiating the 'shed talk' programme, which she puts down to 'wanting to talk to people'.

Michelle admits she's a people-person and enjoys being out and about.

Aurora Grant (Tokanui)

Aurora has been with Environment Southland for three years. She spends most of her day working in enforcement – taking care of enforcement considerations for incidents, and working through the more difficult enforcement processes. She also works with consent holders, property owners and managers to help them bring their operation up to a compliant standard. A smaller part of Aurora's role is field based, where she gets out of the office to undertake resource consent monitoring and incident response. Aurora says the best part of her job is seeing a farm turnaround, from being non-compliant to operating at a best practice level, and seeing the environment benefit from those changes.

Melissa Washbourne (Waimea)

Melissa has worked at in the compliance team at Environment Southland for six years. She spends most of her day doing investigations – typically looking into breaches of the Resource Management Act, rules or consent conditions. Melissa particularly enjoys getting out of the office to do some field work.

Shed talks

A new tool used by compliance staff helps to reduce risks to the environment, while also breaking down some of the myths about compliance officers.

Aptly named, 'shed talks' were an idea of compliance officer Michele Te Maro, who saw the value in going through the requirements of an effluent discharge consent together with consent holders, managers and other farm staff in a setting they are comfortable in – their shed.

The aim of a shed talk is to provide a better understanding of the conditions set out in the consent, and to point out spots on the farm where there is a higher risk of effluent reaching waterways.

A team of five officers spend a large part of their day in the 'off season' encouraging, educating and enabling farmers to work within their consent conditions. Shed talks are also a useful tool for the induction for new staff to the farm.

Shed talks are free. If you'd like to take advantage of this service, then contact us on the details below.

Places each season are limited.

The full 2015/16 Compliance Monitoring Report is available online at www.es.govt.nz