

2015/16

Oreti Catchment

Compliance monitoring report summary

Dairy consent compliance*

Full compliance **85%**

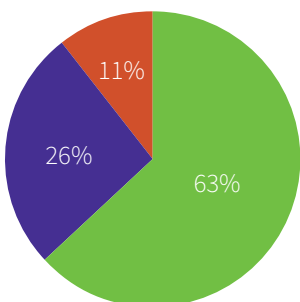
Minor non-compliance **12%**

Significant non-compliance **3%**

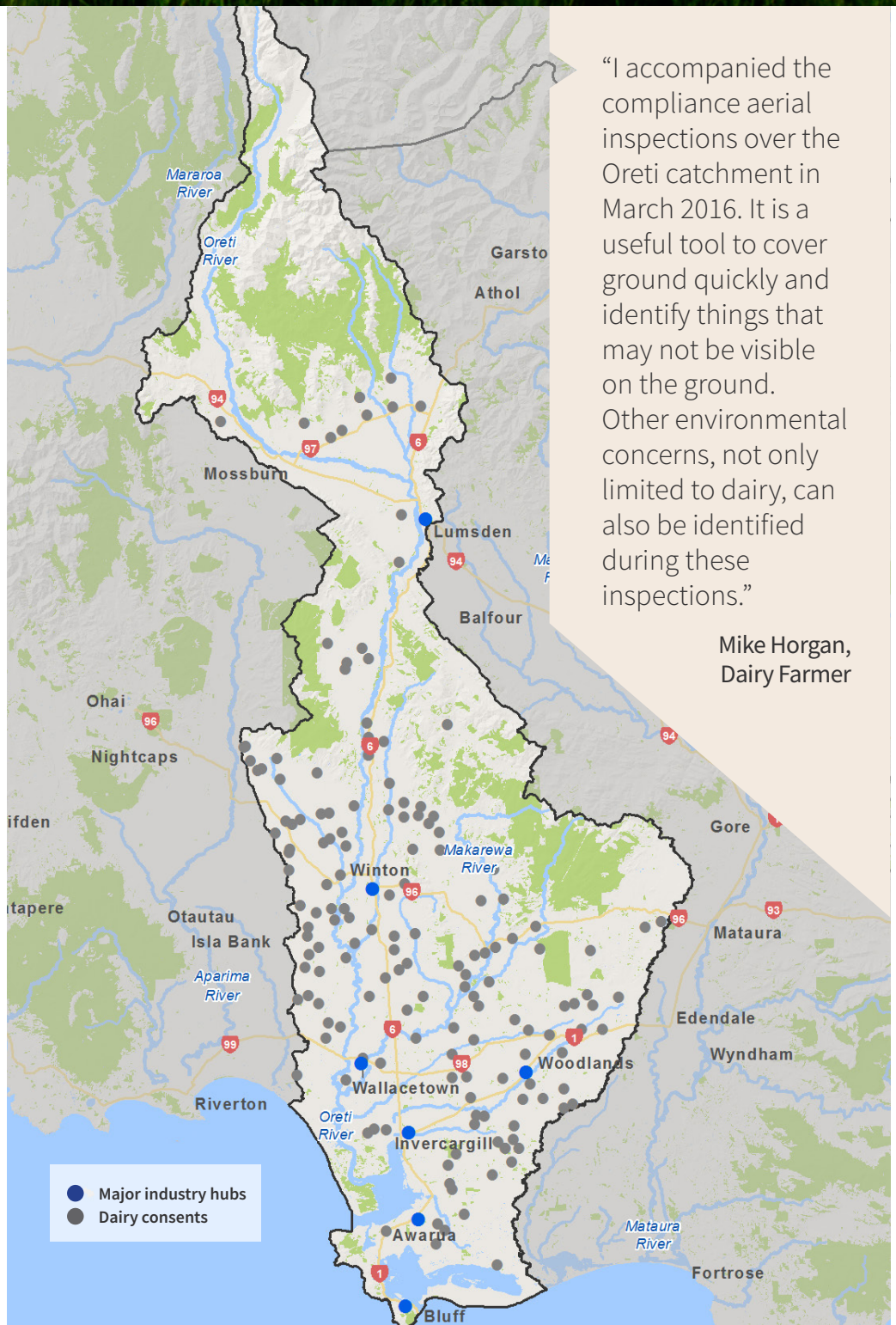
* Assessment of compliance includes all aerial and on-farm inspections.

Industry consent compliance*

- Good to excellent
- Moderate to technical issues
- Significant non-compliance



* Assessment of compliance includes industry and council sewerage systems overall performance against consent conditions.



“I accompanied the compliance aerial inspections over the Oreti catchment in March 2016. It is a useful tool to cover ground quickly and identify things that may not be visible on the ground. Other environmental concerns, not only limited to dairy, can also be identified during these inspections.”

Mike Horgan,
Dairy Farmer

The Oreti catchment in numbers

- ▶ is over 1120 km²
- ▶ has 1158mm of average annual rainfall at the Oreti River at Three Kings
- ▶ highest recorded flood was on the Oreti River at Lumsden Cableway was on 31 May 1978 and measured 1171 cumecs, 3.6m above normal
- ▶ lowest recorded river level was 1.605 cumecs at the Oreti River at Wallacetown on 22 February 1971
- ▶ has 235kms of stop banks to protect people, property and livelihoods

Meet your compliance officers



▶ Rob Bird



▶ Aurora Grant



▶ Melissa Washbourne

Rob Bird (Oreti)

Rob has worked for Environment Southland for nearly three years. In a normal work day you'll find him out and about doing monitoring, enforcement and educating people on their consent conditions. Rob enjoys getting out to have a chat and fix issues people are having. Rob is keen to maintain the long-term sustainability of farming, not just more rules 'to make life difficult'.

Aurora Grant (Awarua & Upper Oreti)

Aurora has been with Environment Southland for three years. She spends most of her day working in enforcement – taking care of enforcement considerations for incidents, and working through the more difficult enforcement processes. She also works with consent holders, property owners and managers to help them bring their operation up to a compliant standard. A smaller part of Aurora's role is field based, where she gets out of the office to undertake resource consent monitoring and incident response. Aurora says the best part of her job is seeing a farm turnaround, from being non-compliant to operating at a best practice level, and seeing the environment benefit from those changes.

Melissa Washbourne (Waihopai)

Melissa has worked at in the compliance team at Environment Southland for six years. She spends most of her day doing investigations – typically looking into breaches of the Resource Management Act, rules or consent conditions. Melissa particularly enjoys getting out of the office to do some field work.

The full 2015/16 Compliance Monitoring Report is available online at www.es.govt.nz

Shed I talks

A new tool used by compliance staff helps to reduce risks to the environment, while also breaking down some of the myths about compliance officers.

Aptly named, 'shed talks' were an idea of compliance officer Michele Te Maro, who saw the value in going through the requirements of an effluent discharge consent together with consent holders, managers and other farm staff in a setting they are comfortable in – their shed.

The aim of a shed talk is to provide a better understanding of the conditions set out in the consent, and to point out spots on the farm where there is a higher risk of effluent reaching waterways.

A team of five officers spend a large part of their day in the 'off season' encouraging, educating and enabling farmers to work within their consent conditions. Shed talks are also a useful tool for the induction for new staff to the farm.

Shed talks are free. If you'd like to take advantage of this service, then contact us on the details below.

Places each season are limited.