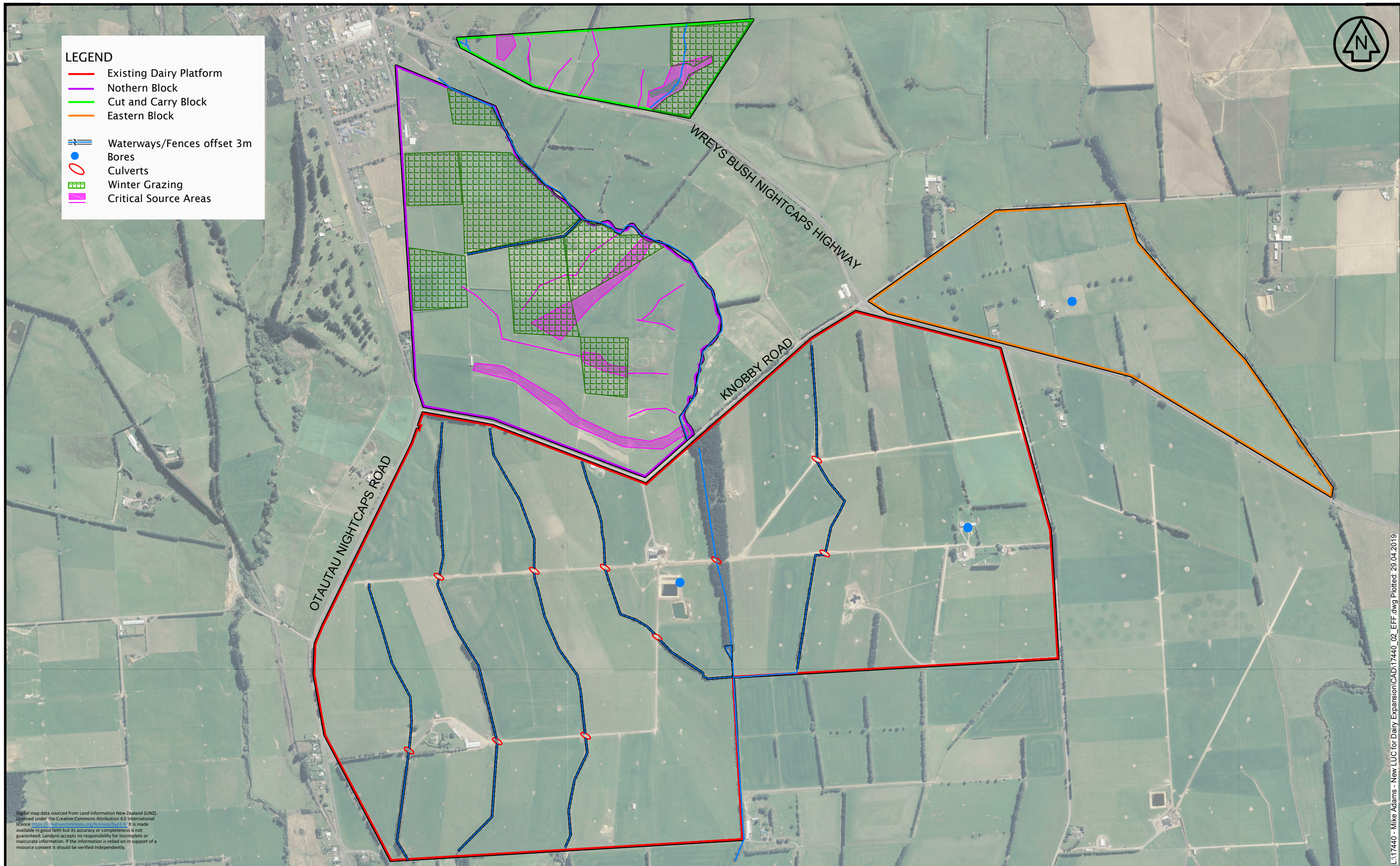




**LEGEND**

- Existing Dairy Platform
- Northern Block
- Cut and Carry Block
- Eastern Block
- Waterways/Fences offset 3m
- Bores
- Culverts
- ▤ Winter Grazing
- ▤ Critical Source Areas



Digital map data sourced from Land Information New Zealand (LINZ). Licensed under the Creative Commons Attribution 4.0 International licence <https://creativecommons.org/licenses/by/4.0/>. It is made available in good faith but its accuracy or completeness is not guaranteed. Landpro accepts no responsibility for incomplete or inaccurate information. If the information is relied on in support of a resource consent it should be verified independently.

L:17440 - Mike Adams - New LUC for Dairy Expansion\CAD17440\_02\_EFF.dwg Plotted: 29.04.2019

Client	ADAMS
NOTES	<ul style="list-style-type: none"> <li>- All dimensions shown are in metres unless otherwise shown</li> <li>- Copyright on this drawing is reserved</li> <li>- Check any electronic data against the hardcopy plan to ensure it is the latest version</li> <li>- If this plan is being used as part of sale and purchase agreement then it is done so on the basis that it is preliminary only, final dimensions and areas may vary on final survey</li> </ul>

**M & C ADAMS  
"DRAFT"  
FEMP**

Rev.	Date	Revision Details	By	Surveyed	Signed	Date	Job No.	Drawing No.
-	-	-	-	-	-	-	17440	FEMP
				Drawn	Signed	Date	Scale	1:6250 @ A1
				SLC		29.4.19	1:12500 @ A3	
				Designed	Signed	Date	Datum & Level	Rev.
							NZTM 2000 & MSL	-



OFFICES IN CROMWELL, GORE, AND NEW PLYMOUTH - [www.landpro.co.nz](http://www.landpro.co.nz)