

## **Companies History**

### **1992**

Abe and Anita formed Woldwide Farm Ltd in 1992 when 240ha of land was purchased in the Heddon Bush Area

### **2008**

The following years the total area grew to 1615ha by 2008. By then these parcels of land had become 4 dairy platforms, support land in the Heddon Bush area and a Run-off block in the Merrivale area.

In 2008 Woldwide Farm Ltd engaged Harrex Group to do a full farm review as it was time to re-look if the current company structure, especially given its size, still allowed for Good management controls, Innovation and entrepreneurship, succession planning, risk Management, clarity and further pursuit of excellence.

The recommendation was to re-structure and create new companies. This would allow the following

- Woldwide Farm Ltd would focus on SUPPORT: Feed/Logistics/Contracting /Admin /Advice/ etc
- The Dairy Farm Companies (W1/W2/W3 etc) would focus on “just” dairy-ing
- The Run-off would concentrate on grazing.
- Having several different companies would give us room for clarity but also diversity and innovation as we can compare different systems/cows/management etc (Examples: Cow sensors / Solar panels / TEAL management / Scraper yards)
- Different companies would allow people within the industry to grow. (Examples: through contract milking and equity partnerships we have helped 4 couples achieve their goal of farm ownership)
- Different companies would allow for prudent risk management by having the ability to sell some of the companies off in the future.
- Different companies would allow for succession planning as son or daughter or outside family interest might want to step into the business through shares or directorship or a farm/farms could be sold to pay off debt.

### **2009**

In 2009 the re-structure took place and Woldwide Farm Ltd sold the land and buildings to 4 newly formed companies and went into equity partnership with one of the contract milkers to form another company (Mayfield Dairy Partnership)

### **2011**

In 2011 Mayfield Partnership bought a run-off at Gladfield Road

### **2012**

Pine Block is leased.

### **2014**

In 2014 Woldwide Farm buys a block of land for grazing and feed at St Highway 96

### **2015**

In 2015 Woldwide Farm buys land at Bayswater road and converts this into dairy-ing. It sells the now established dairy farm to Woldwide Five Ltd in 2016 Also Woldwide Four Ltd is established and buys Mayfield Dairy Partnership.

### **2016**

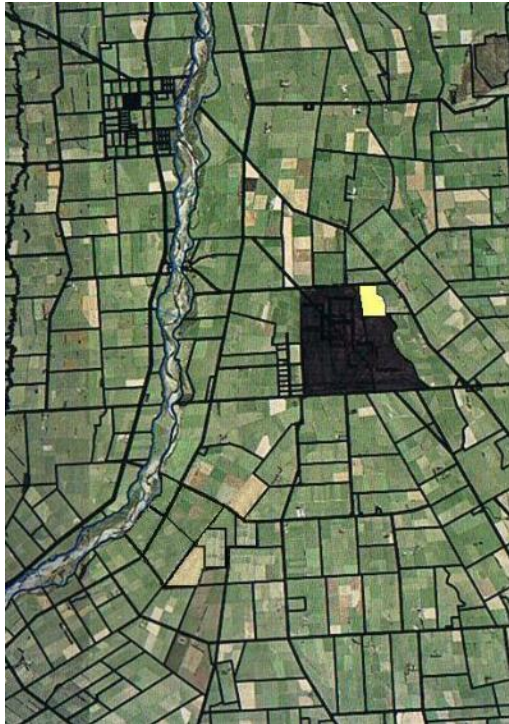
November Advisory board Meeting: A plan is created to do away with all wintering on crop by 2022  
Merriburn is leased by Woldwide Run-off Ltd

## 2017

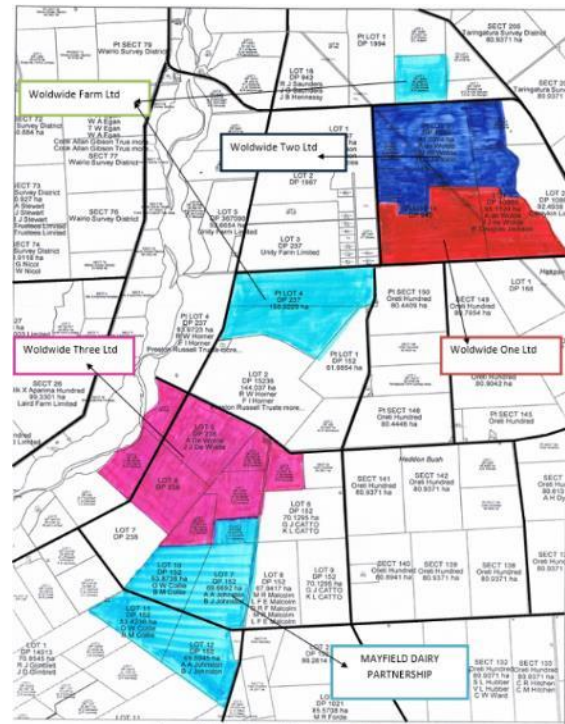
Woldwide Farm buys Cochran block to use for feed and grazing and to convert to dairy with intention to sell to Woldwide Four and Woldwide Five.

**NOTE: All dairy farms have a customer relationship with Woldwide Run-off for young stock grazing and with Woldwide Farm Ltd for Feed a bit of contracting and support. None of the dairy farms have a customer relationship with one another. (SEE TABLE next page)**

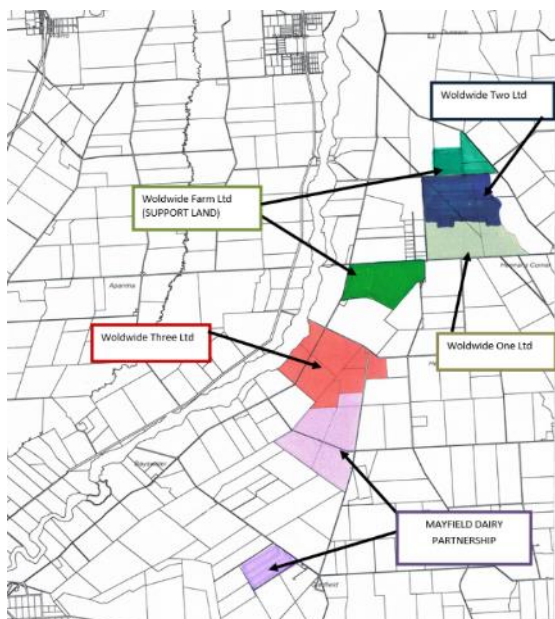
1999



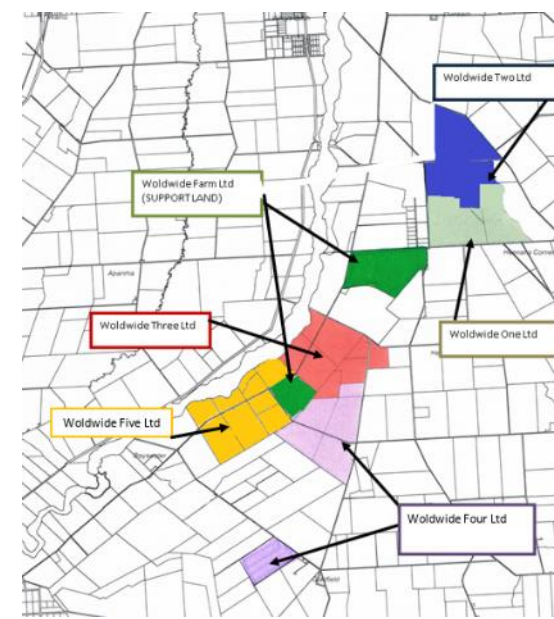
2009



2012



2020 ??



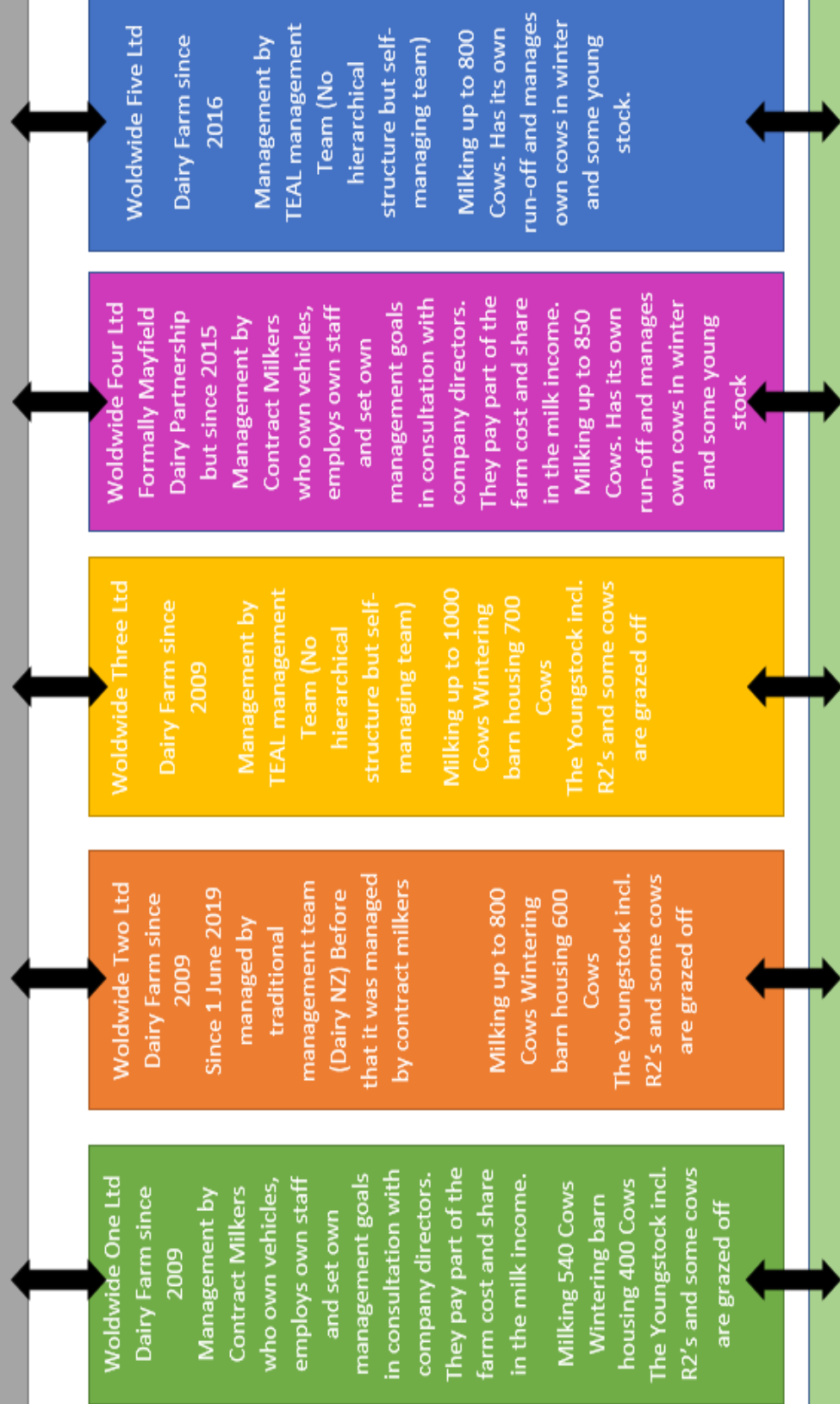
Woldwide Farm Ltd: Operational since 1991 but in 2009 sold all the dairy farms and since then solely focusses on DAIRY SUPPORT  
FEED TRADING and LOGISTICS: Buys in bulk for companies and sells Grain/DDG/PKE/Molasses/Bailage/Hay/Silage  
LAND in Heddon Bush area and derives income from the land by selling feed (grass/bailage/silage/hay) and/or grazing stock and/or rearing bulls and/or leasing out land

CONTRACTING Owns contracting machinery and derives income from contracting and trucking and digger work

ADVISORY and TRAINING Organises training days, organises advisory and coaching

ADMIN Provides administrative services like financials/GST/ PAYDAY filing / H&S / Recruitment / (also outside Agriculture)

RESEARCH and DEVELOPMENT Scopes the agricultural horizon and looks for new technologies and initiatives to increase efficiencies for the Ag industry



Woldwide Run-Off Ltd Company since 2009. Grazing youngstock and some winter grazing. Also, Rock quarry and Forestry (Pine and Natives)  
Has always been managed by husband and wife team.