

FIORDLAND AND STEWART ISLAND PASSAGE PLANS



1. MILFORD SOUND - IN



2. MILFORD SOUND - OUT



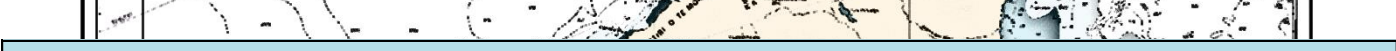
3. THOMPSON TO DOUBTFUL SOUND NORTH



4. DOUBTFUL TO THOMPSON SOUND SOUTH



5. DUSKY TO BREAKSEA SOUND NORTH



6. BREAKSEA TO DUSKY SOUND SOUTH



7. DUSKY TO BREAKSEA SOUND VIA PAGET PASSAGE NORTH



8. BREAKSEA TO DUSKY SOUND VIA PAGET PASSAGE SOUTH



9. STEWART ISLAND-EASTERN APPROACH



10. STEWART ISLAND-EASTERN DEPARTURE



11. STEWART ISLAND-EASTERN DEPARTURE SOUTH OF ULVA ISLAND



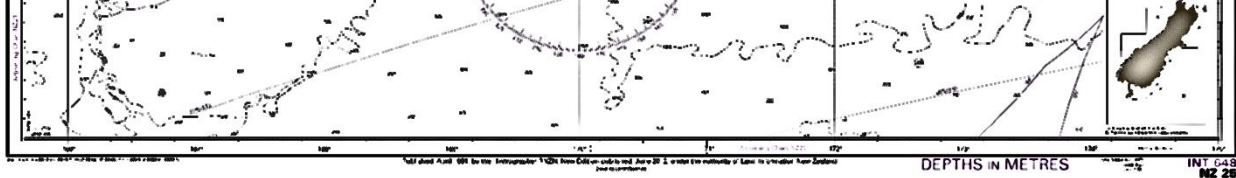
12. STEWART ISLAND-NORTHERN APPROACH

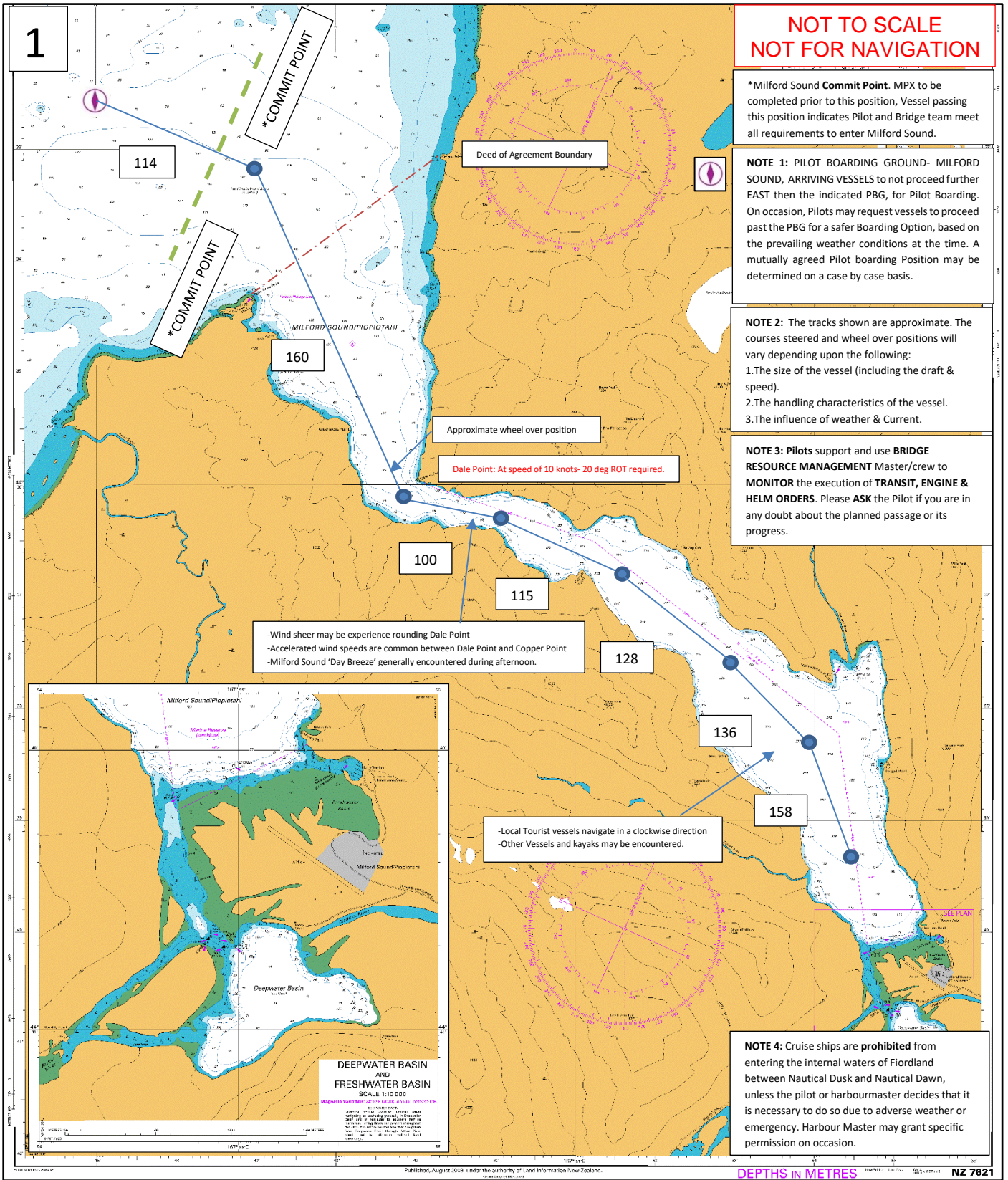


13. STEWART ISLAND-NORTHERN DEPARTURE



14. STEWART ISLAND-NORTHERN DEPARTURE SOUTH OF ULVA ISLAND





MILFORD SOUND - IN

Latitude	Longitude	Name	Remark	Radius(n.m)	WOP(n.m)	Course°	Distance'	Xtrack(m)	Time(min)	Speed(kn)
44° 32.65'S	167° 45.27'E	WP001	Pilot Boarding Ground	0.5'	0.5'	114°	1.6'	50	8	12
44° 33.31'S	167° 47.38'E	WP002	St Anne's Point	0.5'	0.5'	160°	2.9'	50	18	10
44° 36.10'S	167° 48.80'E	WP003	Dale Point	0.5'	0.5'	100°	0.9'	50	5	10
44° 36.26'S	167° 50.02'E	WP004	Stirling Falls	1.0'	0.5'	115°	0.9'	50	6	8
44° 36.62'S	167° 51.11'E	WP005	Copper point	1.0'	0.5'	128°	1.3'	50	10	8
44° 37.42'S	167° 52.55'E	WP006	Mitre Peak	1.0'	0.5'	136°	1.4'	50	10	8
44° 38.39'S	167° 53.88'E	WP007	Bridget point	1.0'	0.5'	158°	1.1'	50	11	6
44° 39.46'S	167° 54.49'E	WP008	Milford Sound	0.5'	0.0		10nm		1h 09m	

2

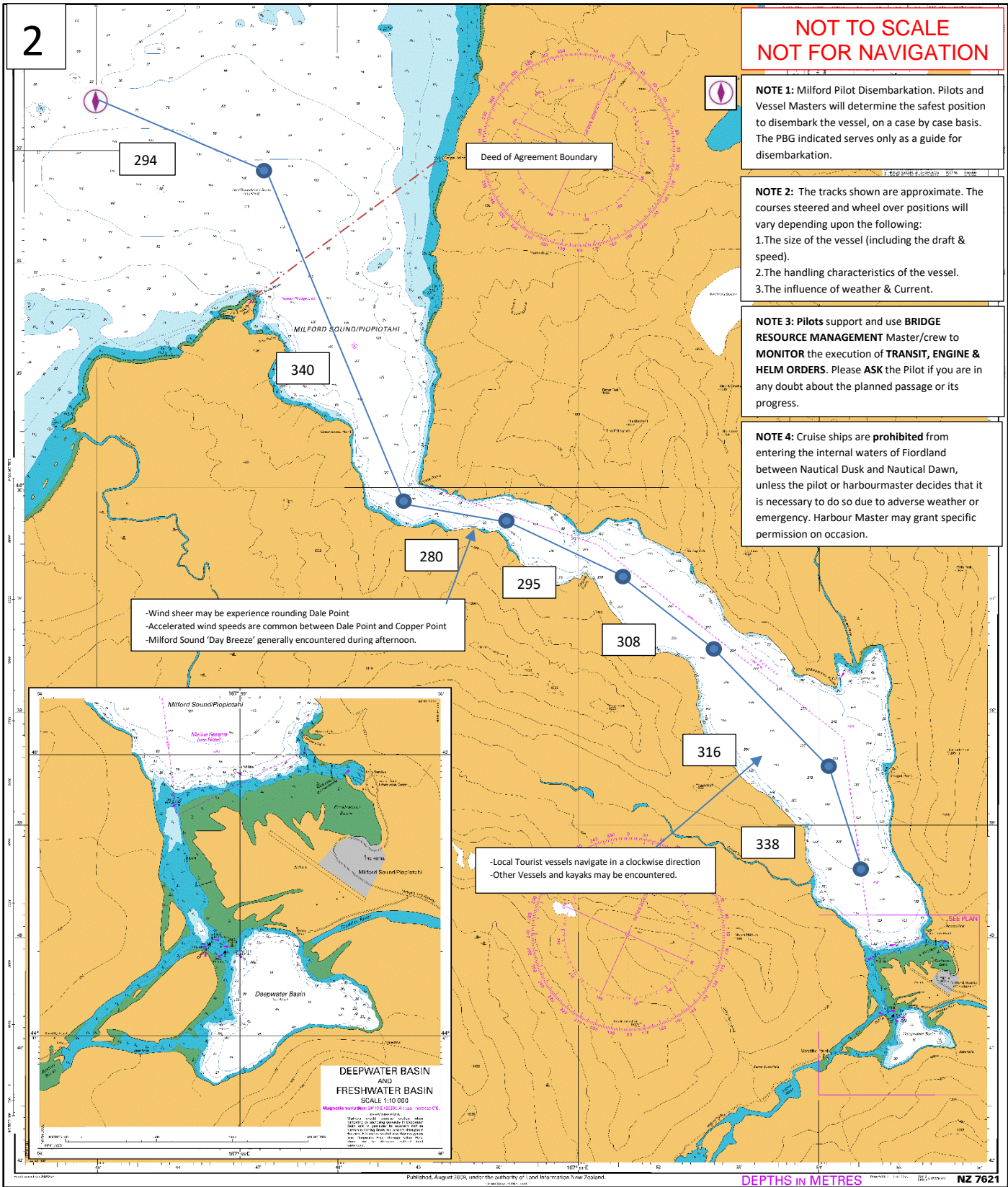
**NOT TO SCALE
NOT FOR NAVIGATION**

NOTE 1: Milford Pilot Disembarkation. Pilots and Vessel Masters will determine the safest position to disembark the vessel, on a case by case basis. The PBG indicated serves only as a guide for disembarkation.

NOTE 2: The tracks shown are approximate. The courses steered and wheel over positions will vary depending upon the following:
1.The size of the vessel (including the draft & speed).
2.The handling characteristics of the vessel.
3.The influence of weather & Current.

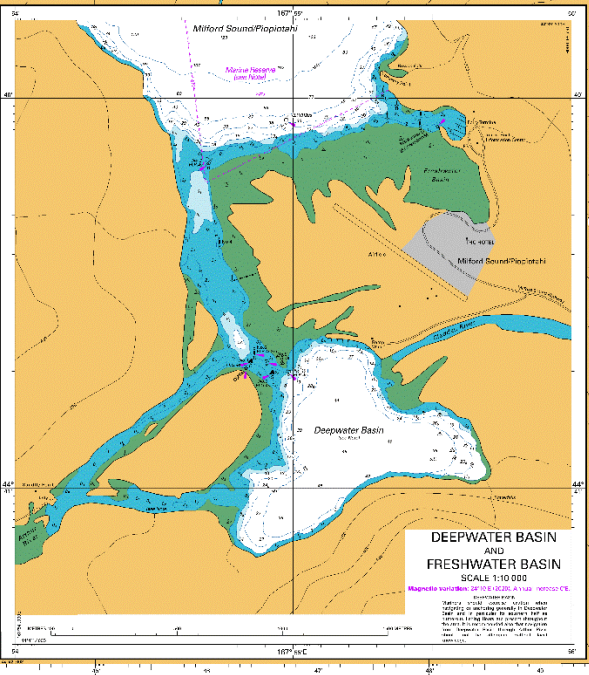
NOTE 3: Pilots support and use **BRIDGE RESOURCE MANAGEMENT** Master/crew to **MONITOR** the execution of **TRANSIT, ENGINE & HELM ORDERS**. Please **ASK** the Pilot if you are in any doubt about the planned passage or its progress.

NOTE 4: Cruise ships are **prohibited** from entering the internal waters of Fiordland between Nautical Dusk and Nautical Dawn, unless the pilot or harbourmaster decides that it is necessary to do so due to adverse weather or emergency. Harbour Master may grant specific permission on occasion.



-Wind shear may be experience rounding Dale Point
-Accelerated wind speeds are common between Dale Point and Copper Point
-Milford Sound 'Day Breeze' generally encountered during afternoon.

-Local Tourist vessels navigate in a clockwise direction
-Other Vessels and kayaks may be encountered.



Published August 2020, under the authority of Land Information New Zealand. **DEPTHS IN METRES** NZ 7621

MILFORD SOUND - OUT

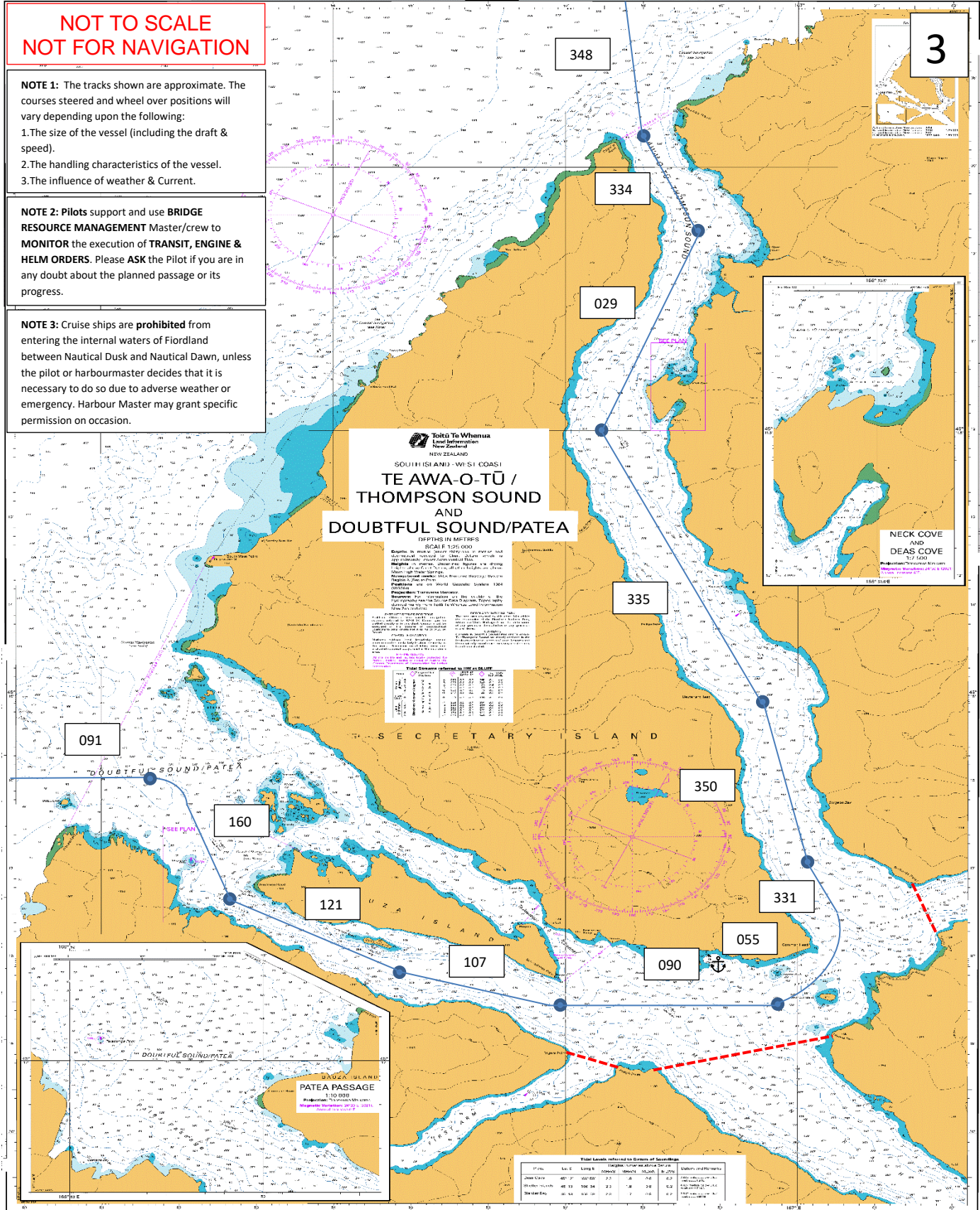
Latitude	Longitude	Name	Remark	Radius(n.m)	WOP(n.m)	Course°	Distance'	Xtrack(m)	Time(min)	Speed(kn)
44° 39.46'S	167° 54.49'E	WP008	Milford Sound	0.5'	0.5'	338°	1.1'	50	11	6
44° 38.39'S	167° 53.88'E	WP007	Bridget point	1.0'	0.5'	316°	1.4'	50	10	8
44° 37.42'S	167° 52.55'E	WP006	Mitre Peak	1.0'	0.5'	308°	1.3'	50	10	8
44° 36.62'S	167° 51.11'E	WP005	Copper point	1.0'	0.5'	295°	0.9'	50	6	8
44° 36.26'S	167° 50.02'E	WP004	Stirling Falls	1.0'	0.5'	280°	0.9'	50	5	10
44° 36.10'S	167° 48.80'E	WP003	Dale Point	0.5'	0.5'	340°	2.9'	50	18	10
44° 33.31'S	167° 47.38'E	WP002	St Anne's Point	0.5'	0.5'	294°	1.6'	50	8	12
44° 32.65'S	167° 45.27'E	WP001	Pilot Boarding Ground	0.5'	0.0'		10nm		1h 09m	

**NOT TO SCALE
NOT FOR NAVIGATION**

NOTE 1: The tracks shown are approximate. The courses steered and wheel over positions will vary depending upon the following:
 1. The size of the vessel (including the draft & speed).
 2. The handling characteristics of the vessel.
 3. The influence of weather & Current.

NOTE 2: Pilots support and use **BRIDGE RESOURCE MANAGEMENT** Master/crew to **MONITOR** the execution of **TRANSIT, ENGINE & HELM ORDERS**. Please **ASK** the Pilot if you are in any doubt about the planned passage or its progress.

NOTE 3: Cruise ships are **prohibited** from entering the internal waters of Fiordland between Nautical Dusk and Nautical Dawn, unless the pilot or harbourmaster decides that it is necessary to do so due to adverse weather or emergency. Harbour Master may grant specific permission on occasion.



THOMPSON TO DOUBTFUL SOUND NORTH

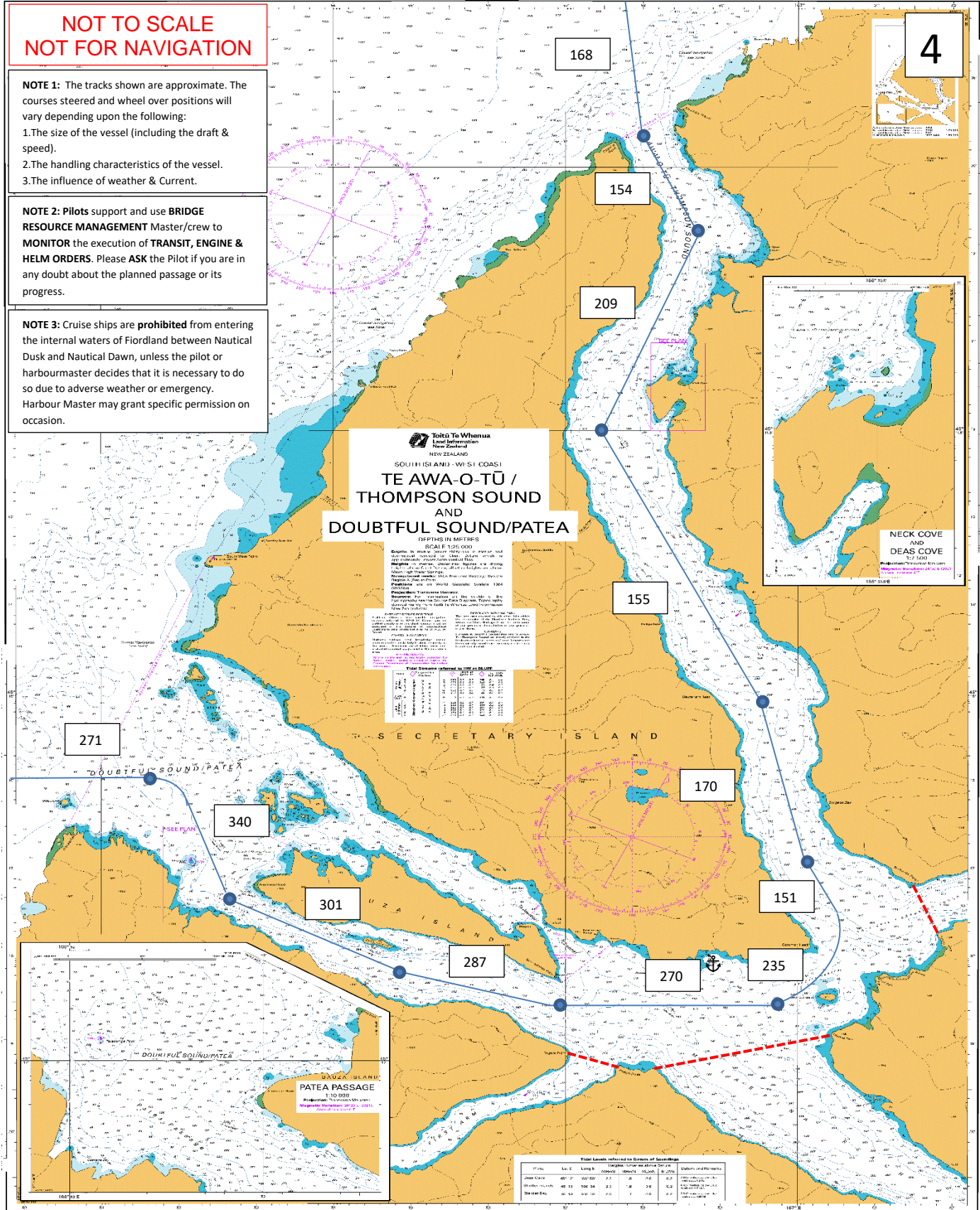
Latitude	Longitude	Name	Remark	Radius(n.m)	WOP(n.m)	Course	Distance'	Xtrack(m)	Time(min)	Speed(kn)
45° 15.77'S	166° 47.36'E	WP001	Febrero Point	2.0'	0.5'	091	3.2'	50	12	16
45° 15.83'S	166° 51.89'E	WP002	Enter Doubtful	1.0'	0.5'	160	1.6'	50	6	16
45° 17.32'S	166° 52.69'E	WP003	Jamieson Head	1.0'	0.5'	121	1.3'	50	6	14
45° 17.98'S	166° 54.22'E	WP004	Utah Island	1.0'	0.5'	107	1.9'	50	7	16
45° 18.55'S	166° 56.86'E	WP005	Marcaciones Point	1.0'	0.5'	090	2.0'	50	7	16
45° 18.55'S	166° 59.64'E	WP006	Seymour Island	1.0'	0.5'	055	1.1'	50	6	14
45° 17.90'S	167° 00.96'E	WP007	Common Head	0.5'	0.5'	331	1.6'	50	8	14
45° 16.54'S	166° 59.87'E	WP008	Surgeon Bay	1.0'	0.5'	350	1.5'	50	6	16
45° 15.07'S	166° 59.52'E	WP009	Lieutenant Head	1.0'	0.5'	335	3.6'	50	14	16
45° 11.79'S	166° 57.33'E	WP010	Deas Cove	1.0'	0.5'	029	2.2'	50	8	16
45° 09.85'S	166° 58.85'E	WP011	Open Cove	1.0'	0.5'	334	1.4'	50	5	16
45° 08.59'S	166° 57.98'E	WP012	Colonial head	1.0'	0.5'	348	2.5'	50	9	16
45° 06.18'S	166° 57.25'E	WP013	Exit Doubtful	3.0'	0		24 nm		1h 34m	

**NOT TO SCALE
NOT FOR NAVIGATION**

NOTE 1: The tracks shown are approximate. The courses steered and wheel over positions will vary depending upon the following:
 1.The size of the vessel (including the draft & speed).
 2.The handling characteristics of the vessel.
 3.The influence of weather & Current.

NOTE 2: Pilots support and use **BRIDGE RESOURCE MANAGEMENT** Master/crew to **MONITOR** the execution of **TRANSIT, ENGINE & HELM ORDERS**. Please **ASK** the Pilot if you are in any doubt about the planned passage or its progress.

NOTE 3: Cruise ships are **prohibited** from entering the internal waters of Fiordland between Nautical Dusk and Nautical Dawn, unless the pilot or harbourmaster decides that it is necessary to do so due to adverse weather or emergency. Harbour Master may grant specific permission on occasion.



DOUBTFUL TO THOMPSON SOUND SOUTH

Latitude	Longitude	Name	Remark	Radius(n.m)	WOP(n.m)	Course°	Distance'	Xtrack(m)	Time(min)	Speed(kn)
45° 06.18'S	166° 57.25'E	WP013	Enter Doubtful	3.0'	0.5'	168	2.5'	50	9	16
45° 08.59'S	166° 57.98'E	WP012	Colonial head	1.0'	0.5'	154	1.4'	50	5	16
45° 09.85'S	166° 58.85'E	WP011	Open Cove	1.0'	0.5'	209	2.2'	50	8	16
45° 11.79'S	166° 57.33'E	WP010	Deas Cove	1.0'	0.5'	155	3.6'	50	14	16
45° 15.07'S	166° 59.52'E	WP009	Lieutenant Head	1.0'	0.5'	170	1.5'	50	6	16
45° 16.54'S	166° 59.87'E	WP008	Surgeon Bay	1.0'	0.5'	151	1.6'	50	8	14
45° 17.90'S	167° 00.96'E	WP007	Common Head	0.5'	0.5'	235	1.1'	50	6	14
45° 18.55'S	166° 59.64'E	WP006	Seymour Island	1.0'	0.5'	270	2.0'	50	7	16
45° 18.55'S	166° 56.86'E	WP005	Marcacones Point	1.0'	0.5'	287	1.9'	50	7	16
45° 17.98'S	166° 54.22'E	WP004	Utah Island	1.0'	0.5'	301	1.3'	50	6	14
45° 17.32'S	166° 52.69'E	WP003	Jamieson Head	1.0'	0.5'	340	1.6'	50	6	16
45° 15.83'S	166° 51.89'E	WP002	Enter Doubtful	1.0'	0.5'	271	3.2'	50	12	16
45° 15.77'S	166° 47.36'E	WP001	Febrero Point	2.0'	0		24 nm		1h 34m	

5

**TE PUAITAHA /
BREAKSEA SOUND
AND
TAMATEA / DUSKY
SOUND**

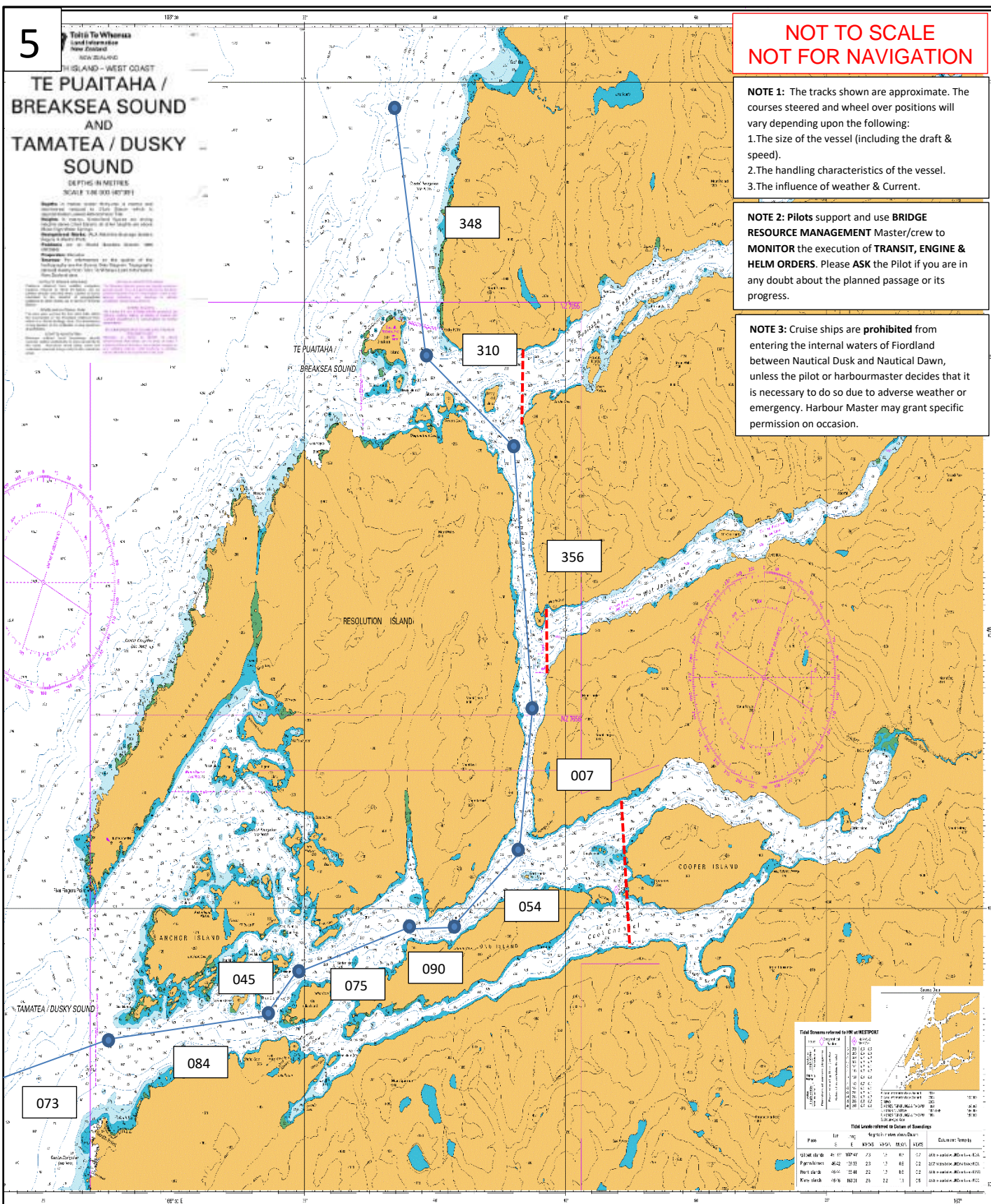
NEW ZEALAND
ISLAND - WEST COAST
TE PUAITAHA /
BREAKSEA SOUND
AND
TAMATEA / DUSKY
SOUND
DEPTHS IN METRES
SCALE 1:50,000 (407391)

**NOT TO SCALE
NOT FOR NAVIGATION**

NOTE 1: The tracks shown are approximate. The courses steered and wheel over positions will vary depending upon the following:
1.The size of the vessel (including the draft & speed).
2.The handling characteristics of the vessel.
3.The influence of weather & Current.

NOTE 2: Pilots support and use **BRIDGE RESOURCE MANAGEMENT** Master/crew to **MONITOR** the execution of **TRANSIT, ENGINE & HELM ORDERS**. Please **ASK** the Pilot if you are in any doubt about the planned passage or its progress.

NOTE 3: Cruise ships are **prohibited** from entering the internal waters of Fiordland between Nautical Dusk and Nautical Dawn, unless the pilot or harbourmaster decides that it is necessary to do so due to adverse weather or emergency. Harbour Master may grant specific permission on occasion.



Total Depths referred to MLLW or NEPTOD

Depth	MLLW	NEPTOD
1.0	0.5	0.5
2.0	1.5	1.5
3.0	2.5	2.5
4.0	3.5	3.5
5.0	4.5	4.5
6.0	5.5	5.5
7.0	6.5	6.5
8.0	7.5	7.5
9.0	8.5	8.5
10.0	9.5	9.5
11.0	10.5	10.5
12.0	11.5	11.5
13.0	12.5	12.5
14.0	13.5	13.5
15.0	14.5	14.5
16.0	15.5	15.5
17.0	16.5	16.5
18.0	17.5	17.5
19.0	18.5	18.5
20.0	19.5	19.5
21.0	20.5	20.5
22.0	21.5	21.5
23.0	22.5	22.5
24.0	23.5	23.5
25.0	24.5	24.5
26.0	25.5	25.5
27.0	26.5	26.5
28.0	27.5	27.5
29.0	28.5	28.5
30.0	29.5	29.5
31.0	30.5	30.5
32.0	31.5	31.5
33.0	32.5	32.5
34.0	33.5	33.5
35.0	34.5	34.5
36.0	35.5	35.5
37.0	36.5	36.5
38.0	37.5	37.5
39.0	38.5	38.5
40.0	39.5	39.5
41.0	40.5	40.5
42.0	41.5	41.5
43.0	42.5	42.5
44.0	43.5	43.5
45.0	44.5	44.5
46.0	45.5	45.5
47.0	46.5	46.5
48.0	47.5	47.5
49.0	48.5	48.5
50.0	49.5	49.5
51.0	50.5	50.5
52.0	51.5	51.5
53.0	52.5	52.5
54.0	53.5	53.5
55.0	54.5	54.5
56.0	55.5	55.5
57.0	56.5	56.5
58.0	57.5	57.5
59.0	58.5	58.5
60.0	59.5	59.5
61.0	60.5	60.5
62.0	61.5	61.5
63.0	62.5	62.5
64.0	63.5	63.5
65.0	64.5	64.5
66.0	65.5	65.5
67.0	66.5	66.5
68.0	67.5	67.5
69.0	68.5	68.5
70.0	69.5	69.5
71.0	70.5	70.5
72.0	71.5	71.5
73.0	72.5	72.5
74.0	73.5	73.5
75.0	74.5	74.5
76.0	75.5	75.5
77.0	76.5	76.5
78.0	77.5	77.5
79.0	78.5	78.5
80.0	79.5	79.5
81.0	80.5	80.5
82.0	81.5	81.5
83.0	82.5	82.5
84.0	83.5	83.5
85.0	84.5	84.5
86.0	85.5	85.5
87.0	86.5	86.5
88.0	87.5	87.5
89.0	88.5	88.5
90.0	89.5	89.5
91.0	90.5	90.5
92.0	91.5	91.5
93.0	92.5	92.5
94.0	93.5	93.5
95.0	94.5	94.5
96.0	95.5	95.5
97.0	96.5	96.5
98.0	97.5	97.5
99.0	98.5	98.5
100.0	99.5	99.5

Total Depths referred to Datum of Soundings

Depth	MLLW	NEPTOD
1.0	0.5	0.5
2.0	1.5	1.5
3.0	2.5	2.5
4.0	3.5	3.5
5.0	4.5	4.5
6.0	5.5	5.5
7.0	6.5	6.5
8.0	7.5	7.5
9.0	8.5	8.5
10.0	9.5	9.5
11.0	10.5	10.5
12.0	11.5	11.5
13.0	12.5	12.5
14.0	13.5	13.5
15.0	14.5	14.5
16.0	15.5	15.5
17.0	16.5	16.5
18.0	17.5	17.5
19.0	18.5	18.5
20.0	19.5	19.5
21.0	20.5	20.5
22.0	21.5	21.5
23.0	22.5	22.5
24.0	23.5	23.5
25.0	24.5	24.5
26.0	25.5	25.5
27.0	26.5	26.5
28.0	27.5	27.5
29.0	28.5	28.5
30.0	29.5	29.5
31.0	30.5	30.5
32.0	31.5	31.5
33.0	32.5	32.5
34.0	33.5	33.5
35.0	34.5	34.5
36.0	35.5	35.5
37.0	36.5	36.5
38.0	37.5	37.5
39.0	38.5	38.5
40.0	39.5	39.5
41.0	40.5	40.5
42.0	41.5	41.5
43.0	42.5	42.5
44.0	43.5	43.5
45.0	44.5	44.5
46.0	45.5	45.5
47.0	46.5	46.5
48.0	47.5	47.5
49.0	48.5	48.5
50.0	49.5	49.5
51.0	50.5	50.5
52.0	51.5	51.5
53.0	52.5	52.5
54.0	53.5	53.5
55.0	54.5	54.5
56.0	55.5	55.5
57.0	56.5	56.5
58.0	57.5	57.5
59.0	58.5	58.5
60.0	59.5	59.5
61.0	60.5	60.5
62.0	61.5	61.5
63.0	62.5	62.5
64.0	63.5	63.5
65.0	64.5	64.5
66.0	65.5	65.5
67.0	66.5	66.5
68.0	67.5	67.5
69.0	68.5	68.5
70.0	69.5	69.5
71.0	70.5	70.5
72.0	71.5	71.5
73.0	72.5	72.5
74.0	73.5	73.5
75.0	74.5	74.5
76.0	75.5	75.5
77.0	76.5	76.5
78.0	77.5	77.5
79.0	78.5	78.5
80.0	79.5	79.5
81.0	80.5	80.5
82.0	81.5	81.5
83.0	82.5	82.5
84.0	83.5	83.5
85.0	84.5	84.5
86.0	85.5	85.5
87.0	86.5	86.5
88.0	87.5	87.5
89.0	88.5	88.5
90.0	89.5	89.5
91.0	90.5	90.5
92.0	91.5	91.5
93.0	92.5	92.5
94.0	93.5	93.5
95.0	94.5	94.5
96.0	95.5	95.5
97.0	96.5	96.5
98.0	97.5	97.5
99.0	98.5	98.5
100.0	99.5	99.5

DUSKY TO BREAKSEA SOUND NORTH

Latitude	Longitude	Name	Remark	Radius(n.m)	WOP(n.m)	Course°	Distance'	Xtrack(m)	Time(min)	Speed(kn)
45° 48.43'S	166° 22.79'E	WP002	Enter dusky Sound	3.0'	0.5'	073	3.3	50	12	16
45° 47.48'S	166° 27.35'E	WP003	Anchor Island	3.0'	0.5'	084	4.3	50	16	16
45° 47.02'S	166° 33.55'E	WP004	Normans Island	1.0'	0.5'	045	1.2	50	5	16
45° 46.14'S	166° 34.83'E	WP005	Indian Island	1.0'	0.5'	075	3.0	50	11	16
45° 45.36'S	166° 38.96'E	WP006	Duck Cove	2.0'	0.5'	090	1.2	50	5	16
45° 45.36'S	166° 40.76'E	WP007	Bowen Channel	1.0'	0.5'	054	2.1	50	8	16
45° 44.07'S	166° 43.27'E	WP008	Front Island	2.0'	0.5'	007	2.6	50	10	16
45° 41.41'S	166° 43.74'E	WP009	Passage Point	1.0'	0.5'	356	4.4	50	17	16
45° 36.96'S	166° 43.30'E	WP010	Occasional Cove	1.0'	0.5'	310	3.3	50	12	16
45° 34.84'S	166° 39.68'E	WP011	Breaksea Island	1.0'	0.5'	348	4.1	50	15	16
45° 30.80'S	166° 38.43'E	WP012	Exit Breaksea Sound	3.0'	0		30.0NM		1H 51M	

6

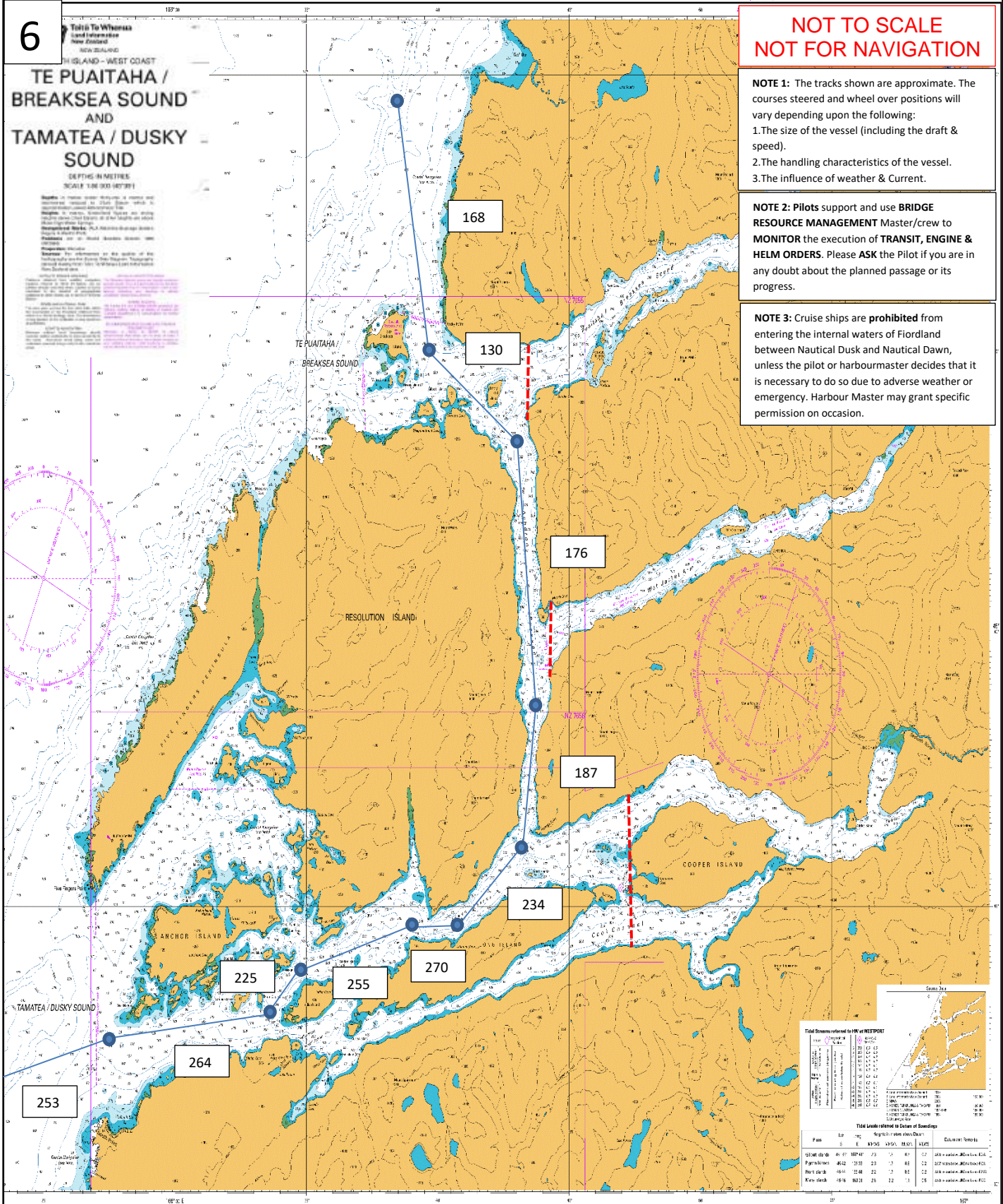
Te Pūaitaha / Breaksea Sound AND Tamatea / Dusky Sound
 DEPTHS IN METRES
 SCALE 1:60 000 (407391)

**NOT TO SCALE
 NOT FOR NAVIGATION**

NOTE 1: The tracks shown are approximate. The courses steered and wheel over positions will vary depending upon the following:
 1. The size of the vessel (including the draft & speed).
 2. The handling characteristics of the vessel.
 3. The influence of weather & Current.

NOTE 2: Pilots support and use **BRIDGE RESOURCE** Management Master/crew to **MONITOR** the execution of **TRANSIT, ENGINE & HELM ORDERS**. Please **ASK** the Pilot if you are in any doubt about the planned passage or its progress.

NOTE 3: Cruise ships are **prohibited** from entering the internal waters of Fiordland between Nautical Dusk and Nautical Dawn, unless the pilot or harbourmaster decides that it is necessary to do so due to adverse weather or emergency. Harbour Master may grant specific permission on occasion.



Total Sounding referred to MLLW at NEPTOS

Chart No.	Scale	Year	Depth	Reference
1000	1:50,000	1980	10.0	1000
1001	1:50,000	1980	10.0	1001
1002	1:50,000	1980	10.0	1002
1003	1:50,000	1980	10.0	1003
1004	1:50,000	1980	10.0	1004
1005	1:50,000	1980	10.0	1005
1006	1:50,000	1980	10.0	1006
1007	1:50,000	1980	10.0	1007
1008	1:50,000	1980	10.0	1008
1009	1:50,000	1980	10.0	1009
1010	1:50,000	1980	10.0	1010

Total Sounding referred to Datum of Soundings

Chart No.	Scale	Year	Depth	Reference
1000	1:50,000	1980	10.0	1000
1001	1:50,000	1980	10.0	1001
1002	1:50,000	1980	10.0	1002
1003	1:50,000	1980	10.0	1003
1004	1:50,000	1980	10.0	1004
1005	1:50,000	1980	10.0	1005
1006	1:50,000	1980	10.0	1006
1007	1:50,000	1980	10.0	1007
1008	1:50,000	1980	10.0	1008
1009	1:50,000	1980	10.0	1009
1010	1:50,000	1980	10.0	1010

BREAKSEA TO DUSKY SOUND SOUTH

Latitude	Longitude	Name	Remark	Radius(n.m)	WOP(n.m)	Course°	Distance	Xtrack(m)	Time(min)	Speed(kn)
45° 30.80'S	166° 38.43'E	WP012	Enter Breaksea Sound	3.0'	0.5'	168	4.1	50	15	16
45° 34.84'S	166° 39.68'E	WP011	Breaksea Island	1.0'	0.5'	130	3.3	50	12	16
45° 36.96'S	166° 43.30'E	WP010	Occasional Cove	1.0'	0.5'	176	4.4	50	17	16
45° 41.41'S	166° 43.74'E	WP009	Passage Point	1.0'	0.5'	187	2.6	50	10	16
45° 44.07'S	166° 43.27'E	WP008	Front Island	2.0'	0.5'	234	2.1	50	8	16
45° 45.36'S	166° 40.76'E	WP007	Bowen Channel	1.0'	0.5'	270	1.2	50	5	16
45° 45.36'S	166° 38.96'E	WP006	Duck Cove	2.0'	0.5'	255	3	50	11	16
45° 46.14'S	166° 34.83'E	WP005	Indian Island	1.0'	0.5'	225	1.2	50	5	16
45° 47.02'S	166° 33.55'E	WP004	Normans Island	1.0'	0.5'	264	4.3	50	16	16
45° 47.48'S	166° 27.35'E	WP003	Anchor Island	3.0'	0.5'	253	3.3	50	12	16
45° 48.43'S	166° 22.79'E	WP002	Exit dusky Sound	3.0'	0		30 NM		1H 51M	

7

Te Pūaitaha / Breaksea Sound AND Tamatea / Dusky Sound
 DEPTHS IN METRES
 SCALE 1:50 000 (47391)

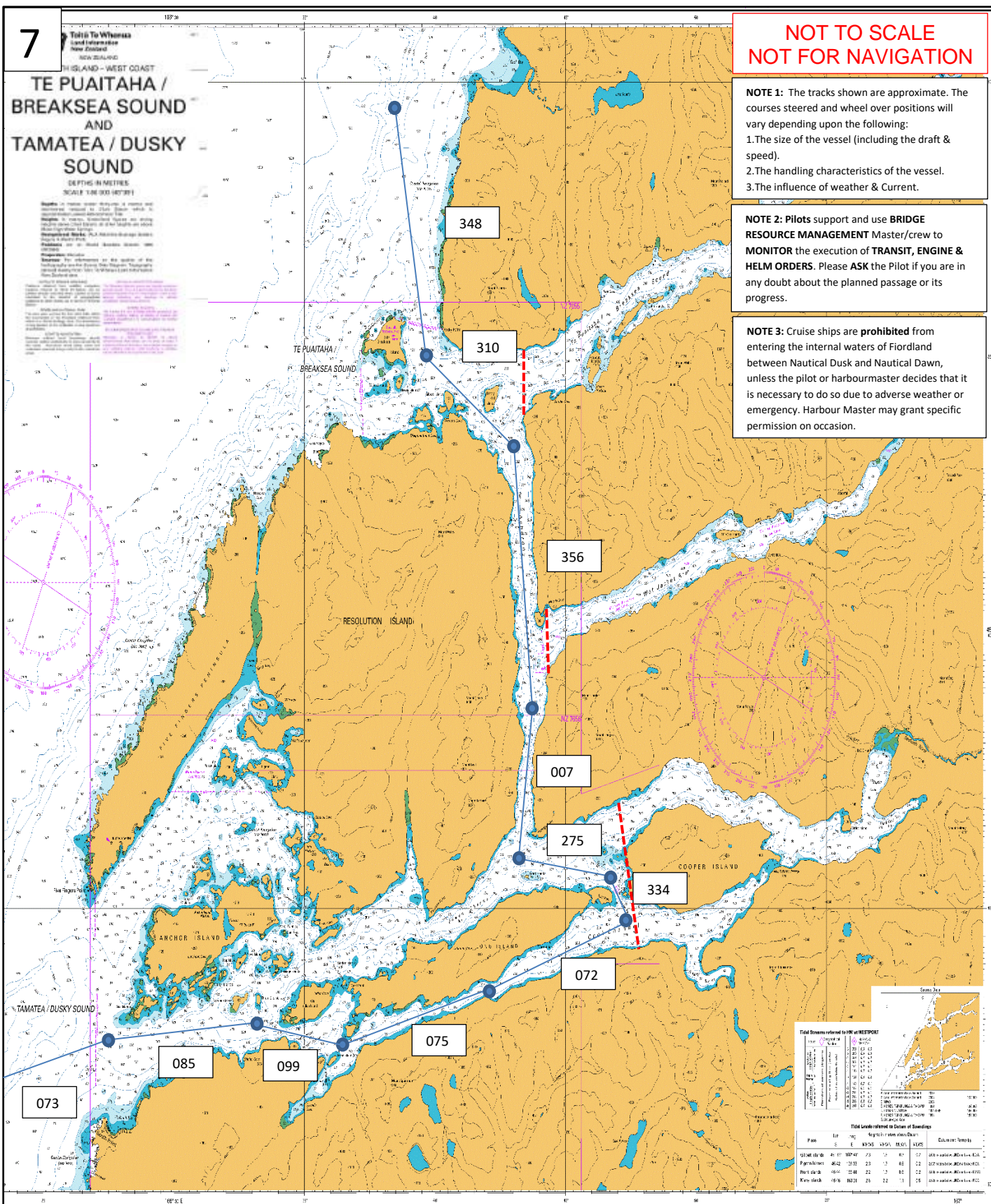
**NOT TO SCALE
 NOT FOR NAVIGATION**

**NOT TO SCALE
 NOT FOR NAVIGATION**

NOTE 1: The tracks shown are approximate. The courses steered and wheel over positions will vary depending upon the following:
 1. The size of the vessel (including the draft & speed).
 2. The handling characteristics of the vessel.
 3. The influence of weather & Current.

NOTE 2: Pilots support and use **BRIDGE RESOURCE MANAGEMENT** Master/crew to **MONITOR** the execution of **TRANSIT, ENGINE & HELM ORDERS**. Please **ASK** the Pilot if you are in any doubt about the planned passage or its progress.

NOTE 3: Cruise ships are **prohibited** from entering the internal waters of Fiordland between Nautical Dusk and Nautical Dawn, unless the pilot or harbourmaster decides that it is necessary to do so due to adverse weather or emergency. Harbour Master may grant specific permission on occasion.



Total Distances referred to in the REPORT

Category	Distance (n.m.)
From 073 to 085	1.0
From 085 to 099	1.0
From 099 to 075	1.0
From 075 to 072	1.0
From 072 to 334	1.0
From 334 to 007	1.0
From 007 to 275	1.0
From 275 to 356	1.0
From 356 to 310	1.0
From 310 to 348	1.0
Total	10.0

Total Lengths referred to in Tables of Soundings

Pass	Lat	Long	Depth (m)	Depth (fms)	Category
WP001	45° 48.43'S	166° 22.79'E	3.0	10	3.0-10
WP002	45° 47.48'S	166° 27.35'E	3.0	10	3.0-10
WP003	45° 47.12'S	166° 33.29'E	1.0	3	1.0-3
WP004	45° 47.50'S	166° 36.58'E	1.0	3	1.0-3
WP005	45° 46.50'S	166° 41.99'E	0.5	1.5	0.5-1.5
WP006	45° 45.26'S	166° 47.34'E	0.5	1.5	0.5-1.5
WP007	45° 44.29'S	166° 46.66'E	0.5	1.5	0.5-1.5
WP008	45° 44.06'S	166° 43.27'E	0.5	1.5	0.5-1.5
WP009	45° 41.41'S	166° 43.74'E	1.0	3	1.0-3
WP010	45° 36.96'S	166° 43.30'E	1.0	3	1.0-3
WP011	45° 34.84'S	166° 39.68'E	1.0	3	1.0-3
WP012	45° 30.80'S	166° 38.43'E	3.0	10	3.0-10

DUSKY TO BREAKSEA SOUND VIA PAGET PASSAGE NORTH

Latitude	Longitude	Name	Remark	Radius(n.m.)	WOP(n.m.)	Course°	Distance'	Xtrack(m)	Time(min)	Speed(kn)
45° 48.43'S	166° 22.79'E	WP002	Enter dusky Sound	3.0'	0.5'	073	3.3	50	12	16
45° 47.48'S	166° 27.35'E	WP003	Anchor Island	3.0'	0.5'	085	4.2	50	16	16
45° 47.12'S	166° 33.29'E	WP004	Normans Island	1.0'	0.5'	099	2.3	50	12	12
45° 47.50'S	166° 36.58'E	WP005	Curlew Point	1.0'	0.5'	075	3.9	50	19	12
45° 46.50'S	166° 41.99'E	WP006	Long Island	0.5'	0.5'	072	3.8	50	19	12
45° 45.26'S	166° 47.34'E	WP007	Paget South	0.5'	0.5'	334	0.9	50	7	8
45° 44.29'S	166° 46.66'E	WP008	Paget North	0.5'	0.5'	275	2.2	50	11	12
45° 44.06'S	166° 43.27'E	WP009	Front Island	0.5'	0.5'	007	2.6	50	10	16
45° 41.41'S	166° 43.74'E	WP010	Passage Point	1.0'	0.5'	356	4.4	50	17	16
45° 36.96'S	166° 43.30'E	WP011	Occasional Cove	1.0'	0.5'	310	3.3	50	12	16
45° 34.84'S	166° 39.68'E	WP012	Breaksea Island	1.0'	0.5'	348	4.1	50	15	16
45° 30.80'S	166° 38.43'E	WP013	Exit Breaksea Sound	3.0'	0		35NM		2H 30M	

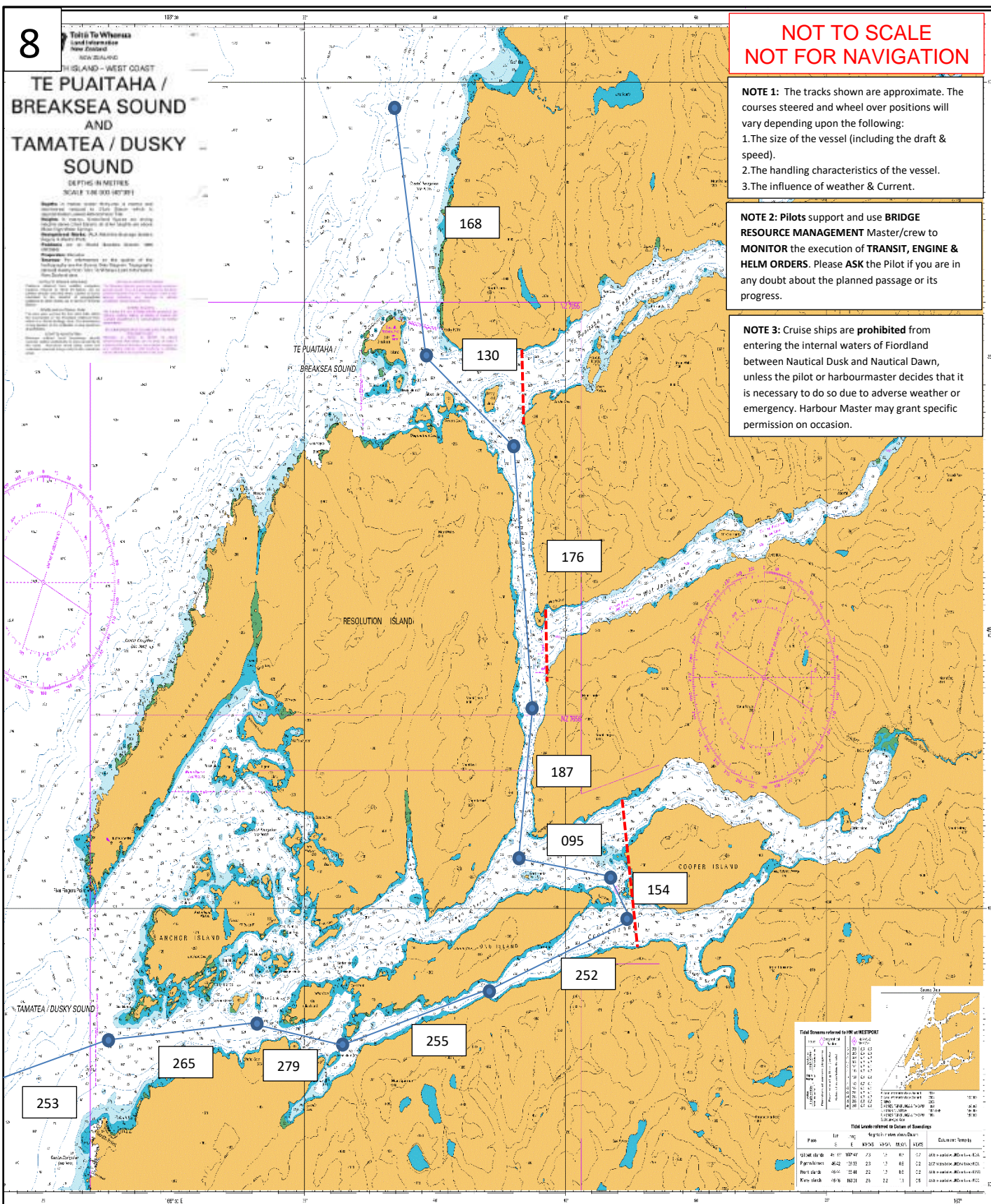
**TE PUAITAHA /
BREAKSEA SOUND
AND
TAMATEA / DUSKY
SOUND**

**NOT TO SCALE
NOT FOR NAVIGATION**

NOTE 1: The tracks shown are approximate. The courses steered and wheel over positions will vary depending upon the following:
1.The size of the vessel (including the draft & speed).
2.The handling characteristics of the vessel.
3.The influence of weather & Current.

NOTE 2: Pilots support and use **BRIDGE RESOURCE MANAGEMENT** Master/crew to **MONITOR** the execution of **TRANSIT, ENGINE & HELM ORDERS**. Please **ASK** the Pilot if you are in any doubt about the planned passage or its progress.

NOTE 3: Cruise ships are **prohibited** from entering the internal waters of Fiordland between Nautical Dusk and Nautical Dawn, unless the pilot or harbourmaster decides that it is necessary to do so due to adverse weather or emergency. Harbour Master may grant specific permission on occasion.



Total Sounding referred to MLLW at WESTPORT

Chart	Scale	Depth	Conversion
1:10,000	1:10,000	1.0m	1.0m
1:50,000	1:50,000	0.2m	0.2m
1:100,000	1:100,000	0.1m	0.1m
1:200,000	1:200,000	0.05m	0.05m
1:500,000	1:500,000	0.02m	0.02m
1:1,000,000	1:1,000,000	0.01m	0.01m

Total Sounding referred to Datum of Soundings

Chart	Scale	Depth	Conversion
1:10,000	1:10,000	1.0m	1.0m
1:50,000	1:50,000	0.2m	0.2m
1:100,000	1:100,000	0.1m	0.1m
1:200,000	1:200,000	0.05m	0.05m
1:500,000	1:500,000	0.02m	0.02m
1:1,000,000	1:1,000,000	0.01m	0.01m

BREAKSEA TO DUSKY SOUND VIA PAGET PASSAGE SOUTH

Latitude	Longitude	Name	Remark	Radius(n.m)	WOP(n.m)	Course°	Distance'	Xtrack(m)	Time(min)	Speed(kn)
45° 30.80'S	166° 38.43'E	WP013	Enter Breaksea Sound	3.0'	0.5'	168	4.1	50	15	16
45° 34.84'S	166° 39.68'E	WP012	Breaksea Island	1.0'	0.5'	130	3.3	50	12	16
45° 36.96'S	166° 43.30'E	WP011	Occasional Cove	1.0'	0.5'	176	4.4	50	17	16
45° 41.41'S	166° 43.74'E	WP010	Passage Point	1.0'	0.5'	187	2.6	50	10	16
45° 44.06'S	166° 43.27'E	WP009	Front Island	0.5'	0.5'	095	2.2	50	11	12
45° 44.29'S	166° 46.66'E	WP008	Paget North	0.5'	0.5'	154	0.9	50	7	8
45° 45.26'S	166° 47.34'E	WP007	Paget South	0.5'	0.5'	252	3.8	50	19	12
45° 46.50'S	166° 41.99'E	WP006	Long Island	0.5'	0.5'	255	3.9	50	19	12
45° 47.50'S	166° 36.58'E	WP005	Curlaw Point	1.0'	0.5'	279	2.3	50	12	12
45° 47.12'S	166° 33.29'E	WP004	Normans Island	1.0'	0.5'	265	4.2	50	16	16
45° 47.48'S	166° 27.35'E	WP003	Anchor Island	3.0'	0.5'	253	3.3	50	12	16
45° 48.43'S	166° 22.79'E	WP002	Exit dusky Sound	3.0'	0		35NM		2H 30M	

STEWART ISLAND-EASTERN APPROACH

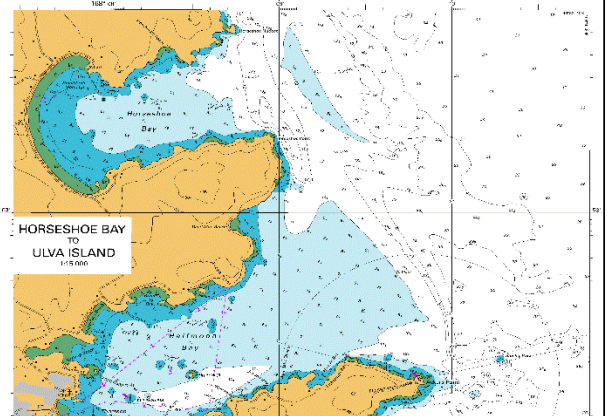
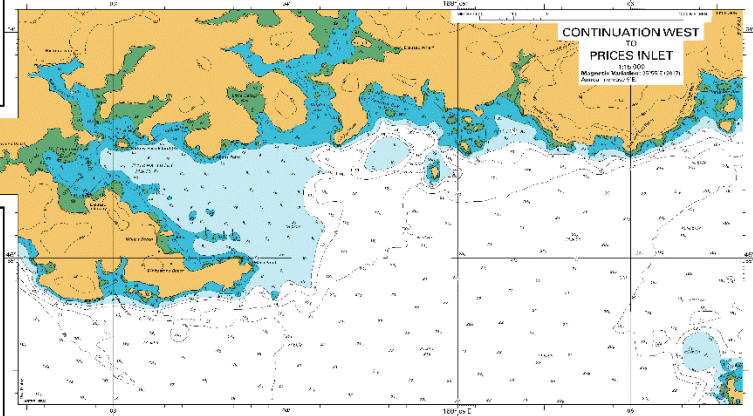
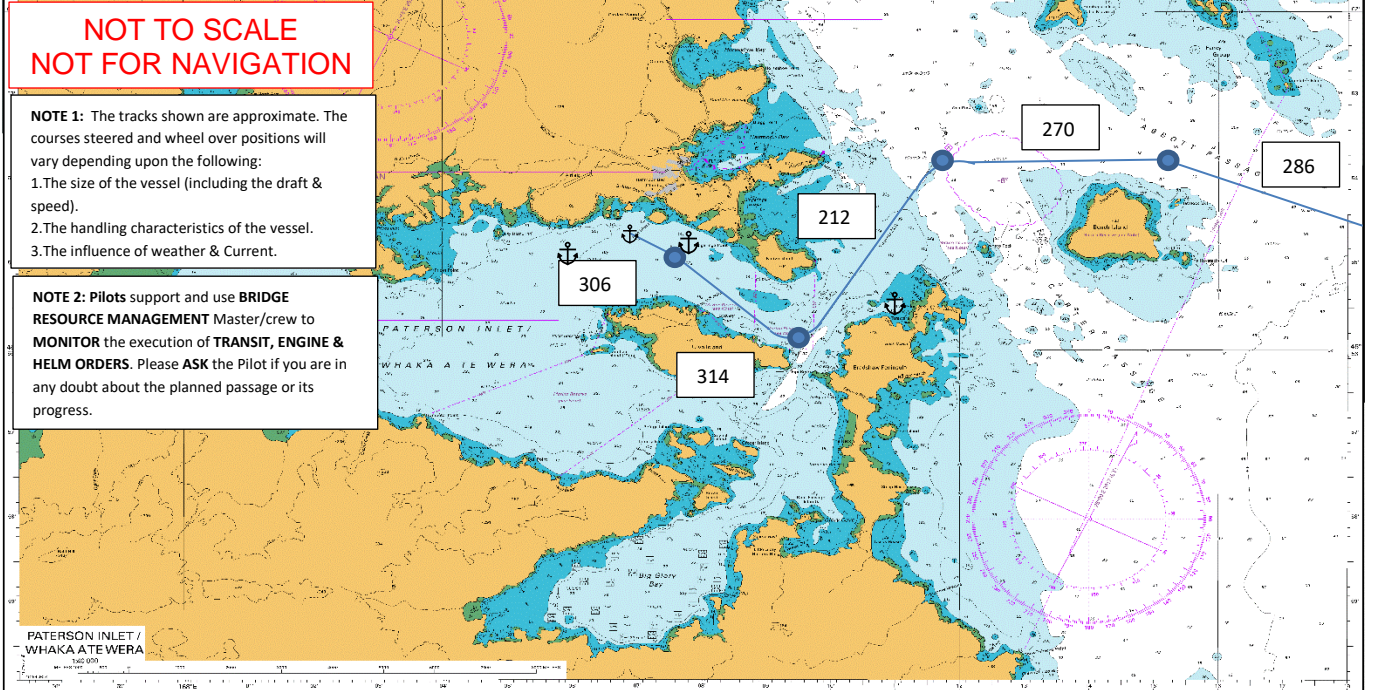
Latitude	Longitude	Name	Remark	Radius(n.m)	WOP(n.m)	Course°	Distance'	Xtrack(m)	Time(min)	Speed(kn)
46° 54.53'S	168° 19.24'E	WP001	East Approach	1.0'	0.5'	286	2.9	50	15	12
46° 53.70'S	168° 15.15'E	WP002	Flat rock	1.0'	0.5'	270	2.3	50	12	12
46° 53.70'S	168° 11.68'E	WP003	Fast rock	1.0'	0.5'	212	2.6	50	13	12
46° 56.12'S	168° 09.45'E	WP004	Ulva island	0.75'	0.5'	314	1.5	50	15	6
46° 54.96'S	168° 07.68'E	WP005	Iona island	1.0'	0.5'	306	0.6	50	10	4
45° 54.58'S	168° 06.92'E	WP006	Anchorage	1.0'	0.5'					
							9.9NM		1H 3M	

**NOT TO SCALE
NOT FOR NAVIGATION**

NOTE 1: The tracks shown are approximate. The courses steered and wheel over positions will vary depending upon the following:

- 1.The size of the vessel (including the draft & speed).
- 2.The handling characteristics of the vessel.
- 3.The influence of weather & Current.

NOTE 2: Pilots support and use **BRIDGE RESOURCE MANAGEMENT** Master/crew to **MONITOR** the execution of **TRANSIT, ENGINE & HELM ORDERS**. Please **ASK** the Pilot if you are in any doubt about the planned passage or its progress.



Land Information New Zealand
NEW ZEALAND
STEWART ISLAND/RAKIURA
PATERSON INLET / WHAKA A TE WERA

DEPTHS IN METRES

Chart Symbols:

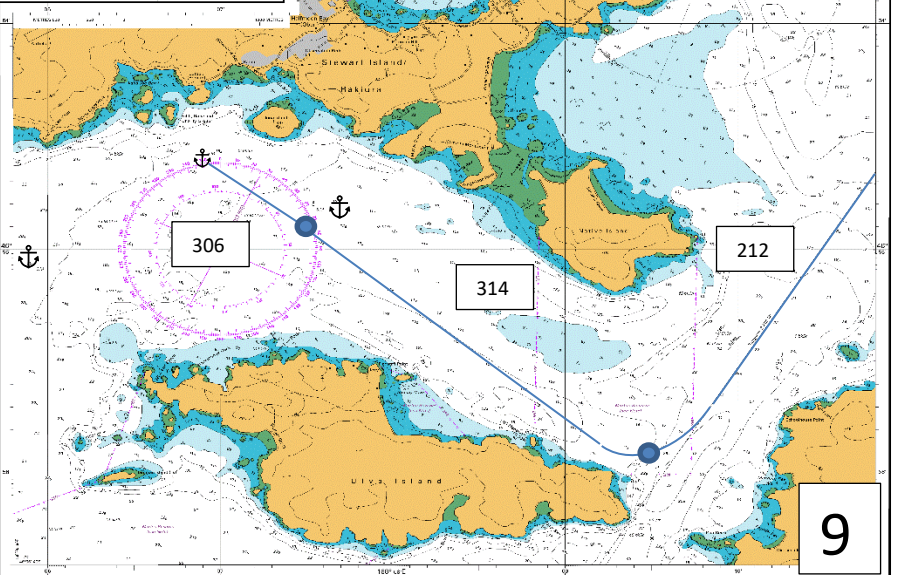
- Anchor: 306
- Anchor: 314
- Anchor: 212

Tidal Gauges referred to HW at 06:00

Station	Mean High Water	Mean Low Water
306	1.2	0.8
314	1.1	0.7
212	1.0	0.6

Total depths referred to Datum of Soundings

Chart	Lat S	Long E	Scale	Year
1000	46 54	168 19	1:50,000	1980
1001	46 54	168 15	1:50,000	1980
1002	46 54	168 11	1:50,000	1980
1003	46 54	168 09	1:50,000	1980
1004	46 54	168 07	1:50,000	1980
1005	46 54	168 06	1:50,000	1980



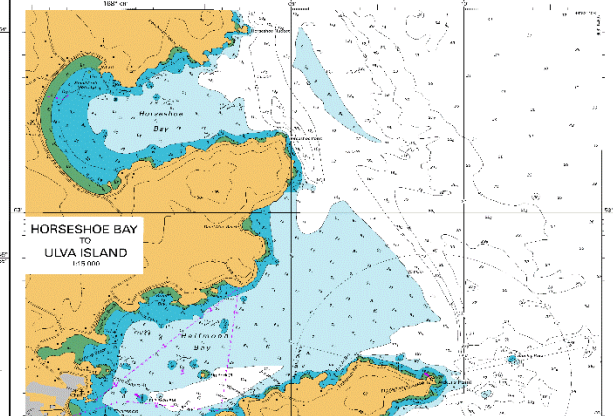
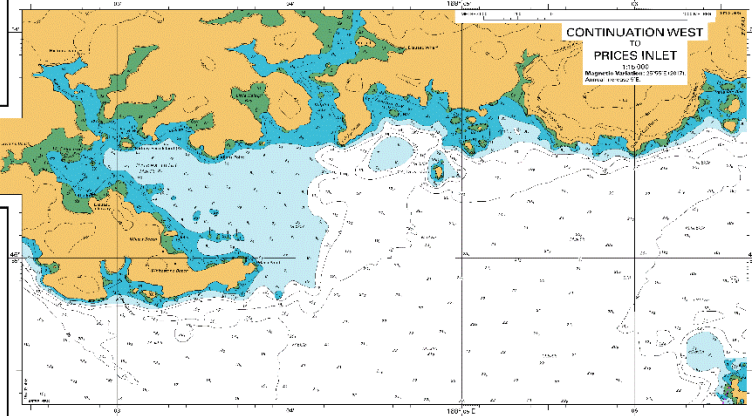
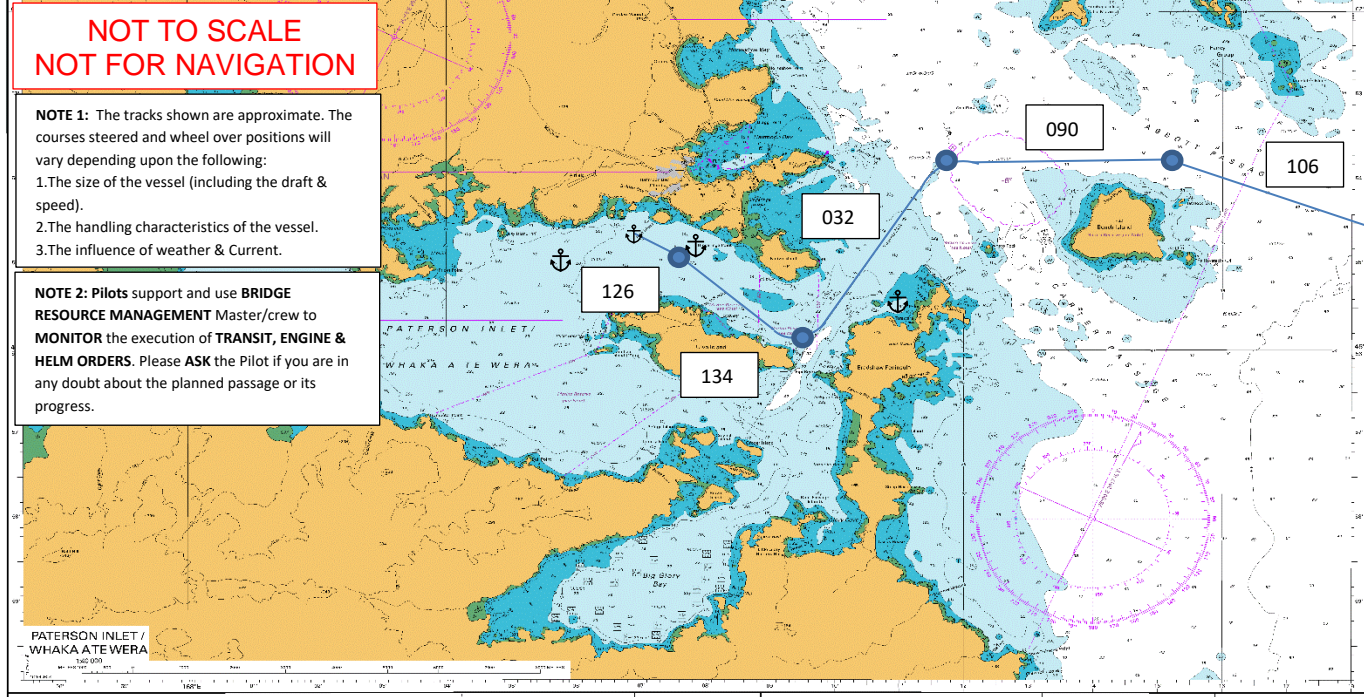
STEWART ISLAND-EASTERN DEPARTURE

Latitude	Longitude	Name	Remark	Radius(n.m)	WOP(n.m)	Course°	Distance'	Xtrack(m)	Time(min)	Speed(kn)
45° 54.58'S	168° 06.92'E	WP006	Anchorage	1.0'	0.5'	126	0.6	50	10	4
46° 54.96'S	168° 07.68'E	WP005	Iona island	1.0'	0.5'	134	1.5	50	15	6
46° 56.12'S	168° 09.45'E	WP004	Ulva island	0.75'	0.5'	032	2.6	50	13	12
46° 53.70'S	168° 11.68'E	WP003	Fast rock	1.0'	0.5'	90	2.3	50	12	12
46° 53.70'S	168° 15.15'E	WP002	Flat rock	1.0'	0.5'	106	2.9	50	15	12
46° 54.53'S	168° 19.24'E	WP001	East Approach	1.0'	0.5'		9.9NM		1H 3M	

**NOT TO SCALE
NOT FOR NAVIGATION**

NOTE 1: The tracks shown are approximate. The courses steered and wheel over positions will vary depending upon the following:
 1. The size of the vessel (including the draft & speed).
 2. The handling characteristics of the vessel.
 3. The influence of weather & Current.

NOTE 2: Pilots support and use **BRIDGE RESOURCE MANAGEMENT** Master/crew to **MONITOR** the execution of **TRANSIT, ENGINE & HELM ORDERS**. Please **ASK** the Pilot if you are in any doubt about the planned passage or its progress.



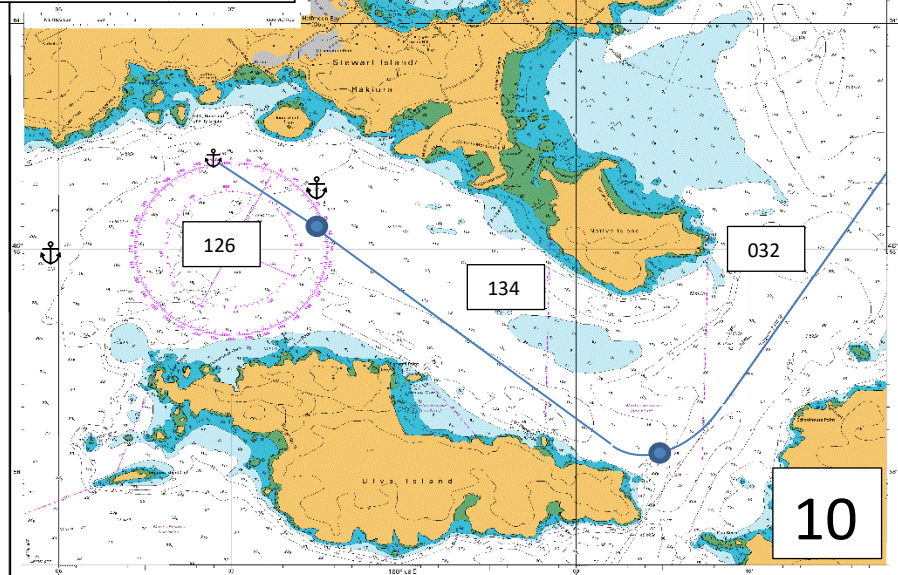
Land Information New Zealand
 NEW ZEALAND
 STEWART ISLAND/RAKIURA
PATERSON INLET / WHAKA A TE WERA
 DEPTHS IN METRES

Depths: The depths shown on this chart are based on the latest available information and are subject to change. The depths are shown in metres and are based on the datum of Mean High Water Springs (MHWS). The depths are shown in metres and are based on the datum of Mean High Water Springs (MHWS). The depths are shown in metres and are based on the datum of Mean High Water Springs (MHWS).

Management: The chart is managed by the Department of Conservation (DOC) and is available for use by all vessels. The chart is managed by the Department of Conservation (DOC) and is available for use by all vessels. The chart is managed by the Department of Conservation (DOC) and is available for use by all vessels.

Scale: The chart is drawn to a scale of 1:50,000. The chart is drawn to a scale of 1:50,000. The chart is drawn to a scale of 1:50,000.

Chart No. 10



STEWART ISLAND-EASTERN DEPARTURE SOUTH OF ULVA ISLAND

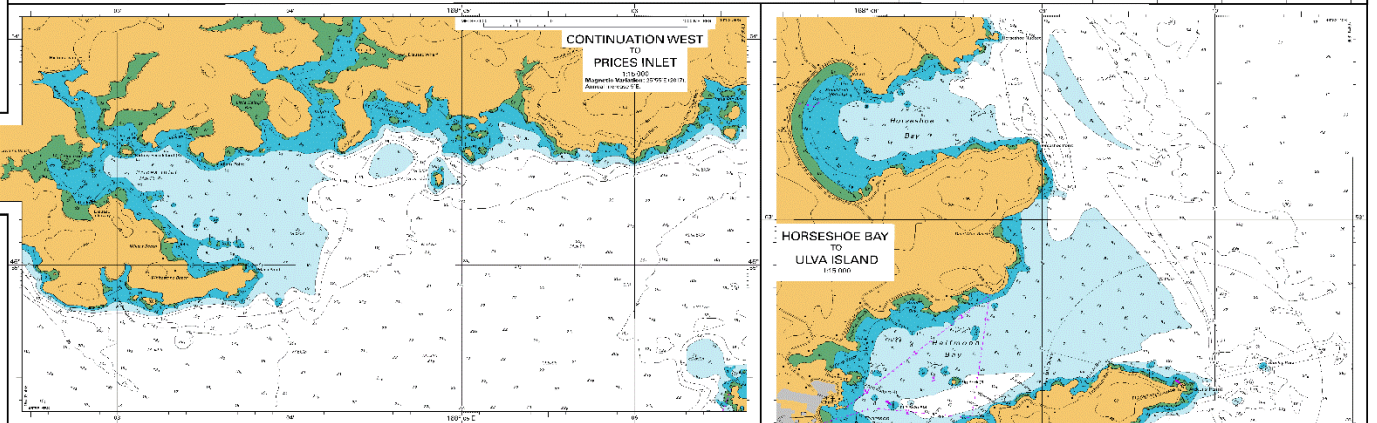
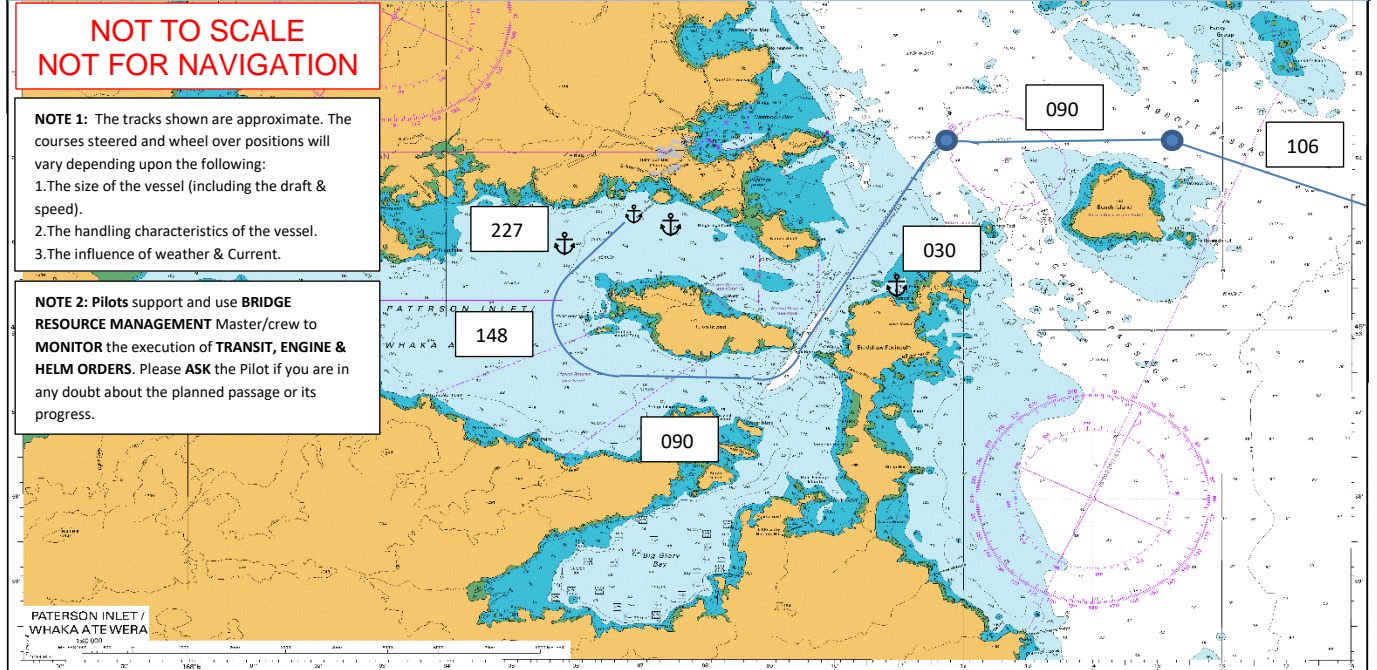
Latitude	Longitude	Name	Remark	Radius(n.m)	WOP(n.m)	Course°	Distance'	Xtrack(m)	Time(min)	Speed(kn)
45° 54.58'S	168° 06.92'E	WP001	Anchorage	1.0'	0.5'	227	1.6	50	24	4
46° 55.68'S	168° 05.17'E	WP002	West Ulva	0.75'	0.5'	148	1.2	50	9	8
46° 56.69'S	168° 06.07'E	WP003	Tamihau Is	1.0'	0.5'	090	2.1	50	15	8
46° 56.70'S	168° 09.09'E	WP004	South Ulva	1.0'	0.5'	030	3.5	50	26	8
46° 53.70'S	168° 11.67'E	WP005	Fast Rock	1.0'	0.5'	090	2.4	50	12	12
46° 53.70'S	168° 15.15'E	WP006	Flat Rock	1.0'	0.5'	106	2.9	50	15	12
46° 54.53'S	168° 19.24'E	WP007	To Port Chalmers	1.0'	0.5'		14NM		1H 41M	

**NOT TO SCALE
NOT FOR NAVIGATION**

NOTE 1: The tracks shown are approximate. The courses steered and wheel over positions will vary depending upon the following:

- 1.The size of the vessel (including the draft & speed).
- 2.The handling characteristics of the vessel.
- 3.The influence of weather & Current.

NOTE 2: Pilots support and use **BRIDGE RESOURCE MANAGEMENT** Master/crew to **MONITOR** the execution of **TRANSIT, ENGINE & HELM ORDERS**. Please **ASK** the Pilot if you are in any doubt about the planned passage or its progress.



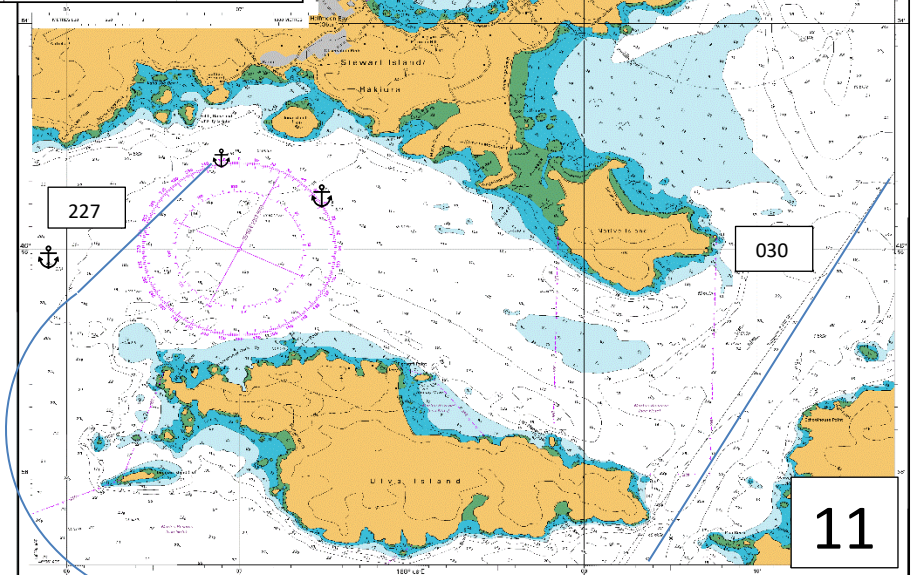
Land Information New Zealand
NEW ZEALAND
STEWART ISLAND/RAKIURA
PATERSON INLET / WHAKA A TE WERA
DEPTHS IN METRES

Depths: Shown in metres. Soundings are in metres and are referred to Mean High Water Springs (MHWS). Soundings are in metres and are referred to Mean High Water Springs (MHWS). Soundings are in metres and are referred to Mean High Water Springs (MHWS).

Soundings: Shown in metres. Soundings are in metres and are referred to Mean High Water Springs (MHWS). Soundings are in metres and are referred to Mean High Water Springs (MHWS). Soundings are in metres and are referred to Mean High Water Springs (MHWS).

Scale: 1:50,000

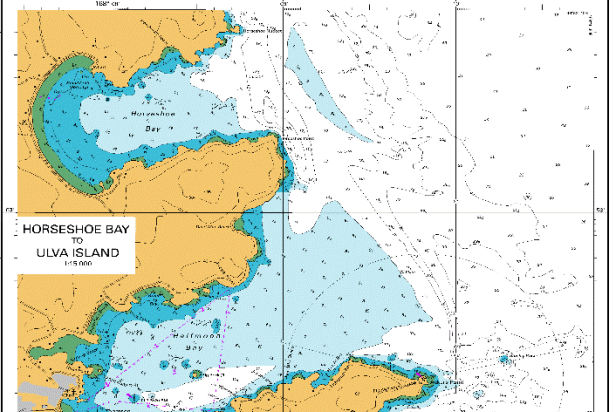
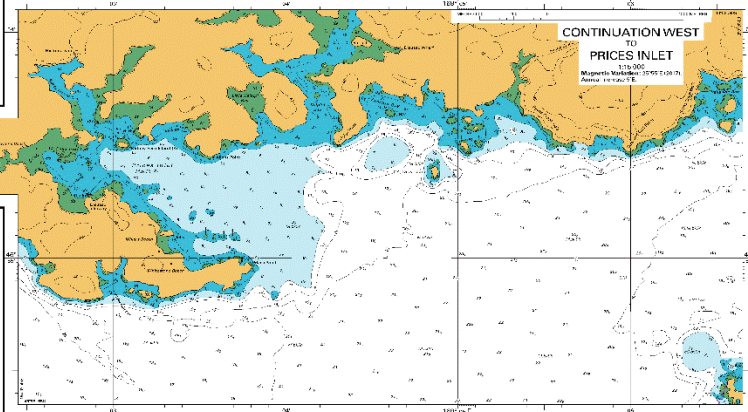
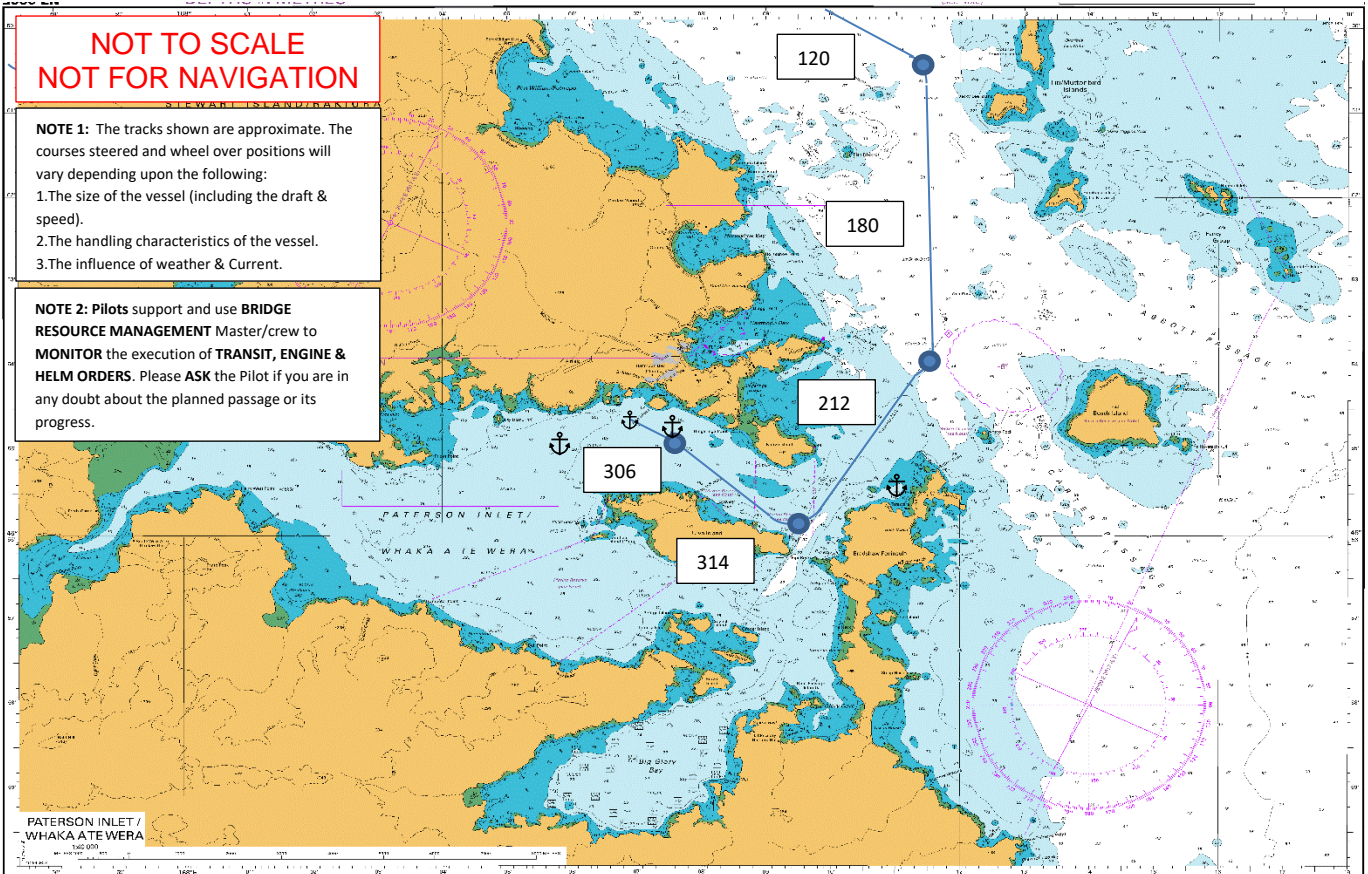
Chart No. 11



**NOT TO SCALE
NOT FOR NAVIGATION**

NOTE 1: The tracks shown are approximate. The courses steered and wheel over positions will vary depending upon the following:
1. The size of the vessel (including the draft & speed).
2. The handling characteristics of the vessel.
3. The influence of weather & Current.

NOTE 2: Pilots support and use **BRIDGE RESOURCE MANAGEMENT** Master/crew to **MONITOR** the execution of **TRANSIT, ENGINE & HELM ORDERS**. Please **ASK** the Pilot if you are in any doubt about the planned passage or its progress.



Land Information New Zealand
NEW ZEALAND
STEWART ISLAND/RAKIURA
PATERSON INLET / WHAKA A TE WERA

DEPTHS IN METRES

Chart 101

Scale: 1:50,000

Vertical Datum: Mean Sea Level (MSL)

Horizontal Datum: New Zealand Geodetic Datum (NZGD 49)

Projection: Transverse Mercator

Units: Metres

Scale: 1:50,000

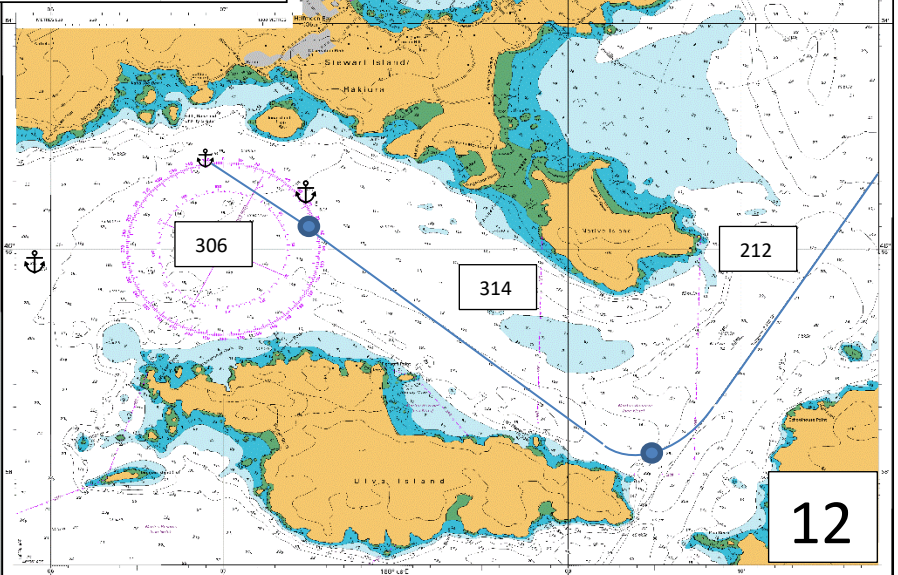
Vertical Datum: Mean Sea Level (MSL)

Horizontal Datum: New Zealand Geodetic Datum (NZGD 49)

Projection: Transverse Mercator

Units: Metres

Code	Lat S	Long E	Depth (m)	Depth (fms)
1	46 54 58	168 06 52	0.5	1.5
2	46 54 58	168 06 52	1.0	3.0
3	46 54 58	168 06 52	1.5	4.5
4	46 54 58	168 06 52	2.0	6.0
5	46 54 58	168 06 52	2.5	7.5
6	46 54 58	168 06 52	3.0	9.0
7	46 54 58	168 06 52	3.5	10.5
8	46 54 58	168 06 52	4.0	12.0
9	46 54 58	168 06 52	4.5	13.5
10	46 54 58	168 06 52	5.0	15.0
11	46 54 58	168 06 52	5.5	16.5
12	46 54 58	168 06 52	6.0	18.0
13	46 54 58	168 06 52	6.5	19.5
14	46 54 58	168 06 52	7.0	21.0
15	46 54 58	168 06 52	7.5	22.5
16	46 54 58	168 06 52	8.0	24.0
17	46 54 58	168 06 52	8.5	25.5
18	46 54 58	168 06 52	9.0	27.0
19	46 54 58	168 06 52	9.5	28.5
20	46 54 58	168 06 52	10.0	30.0
21	46 54 58	168 06 52	10.5	31.5
22	46 54 58	168 06 52	11.0	33.0
23	46 54 58	168 06 52	11.5	34.5
24	46 54 58	168 06 52	12.0	36.0
25	46 54 58	168 06 52	12.5	37.5
26	46 54 58	168 06 52	13.0	39.0
27	46 54 58	168 06 52	13.5	40.5
28	46 54 58	168 06 52	14.0	42.0
29	46 54 58	168 06 52	14.5	43.5
30	46 54 58	168 06 52	15.0	45.0
31	46 54 58	168 06 52	15.5	46.5
32	46 54 58	168 06 52	16.0	48.0
33	46 54 58	168 06 52	16.5	49.5
34	46 54 58	168 06 52	17.0	51.0
35	46 54 58	168 06 52	17.5	52.5
36	46 54 58	168 06 52	18.0	54.0
37	46 54 58	168 06 52	18.5	55.5
38	46 54 58	168 06 52	19.0	57.0
39	46 54 58	168 06 52	19.5	58.5
40	46 54 58	168 06 52	20.0	60.0
41	46 54 58	168 06 52	20.5	61.5
42	46 54 58	168 06 52	21.0	63.0
43	46 54 58	168 06 52	21.5	64.5
44	46 54 58	168 06 52	22.0	66.0
45	46 54 58	168 06 52	22.5	67.5
46	46 54 58	168 06 52	23.0	69.0
47	46 54 58	168 06 52	23.5	70.5
48	46 54 58	168 06 52	24.0	72.0
49	46 54 58	168 06 52	24.5	73.5
50	46 54 58	168 06 52	25.0	75.0
51	46 54 58	168 06 52	25.5	76.5
52	46 54 58	168 06 52	26.0	78.0
53	46 54 58	168 06 52	26.5	79.5
54	46 54 58	168 06 52	27.0	81.0
55	46 54 58	168 06 52	27.5	82.5
56	46 54 58	168 06 52	28.0	84.0
57	46 54 58	168 06 52	28.5	85.5
58	46 54 58	168 06 52	29.0	87.0
59	46 54 58	168 06 52	29.5	88.5
60	46 54 58	168 06 52	30.0	90.0
61	46 54 58	168 06 52	30.5	91.5
62	46 54 58	168 06 52	31.0	93.0
63	46 54 58	168 06 52	31.5	94.5
64	46 54 58	168 06 52	32.0	96.0
65	46 54 58	168 06 52	32.5	97.5
66	46 54 58	168 06 52	33.0	99.0
67	46 54 58	168 06 52	33.5	100.5
68	46 54 58	168 06 52	34.0	102.0
69	46 54 58	168 06 52	34.5	103.5
70	46 54 58	168 06 52	35.0	105.0
71	46 54 58	168 06 52	35.5	106.5
72	46 54 58	168 06 52	36.0	108.0
73	46 54 58	168 06 52	36.5	109.5
74	46 54 58	168 06 52	37.0	111.0
75	46 54 58	168 06 52	37.5	112.5
76	46 54 58	168 06 52	38.0	114.0
77	46 54 58	168 06 52	38.5	115.5
78	46 54 58	168 06 52	39.0	117.0
79	46 54 58	168 06 52	39.5	118.5
80	46 54 58	168 06 52	40.0	120.0
81	46 54 58	168 06 52	40.5	121.5
82	46 54 58	168 06 52	41.0	123.0
83	46 54 58	168 06 52	41.5	124.5
84	46 54 58	168 06 52	42.0	126.0
85	46 54 58	168 06 52	42.5	127.5
86	46 54 58	168 06 52	43.0	129.0
87	46 54 58	168 06 52	43.5	130.5
88	46 54 58	168 06 52	44.0	132.0
89	46 54 58	168 06 52	44.5	133.5
90	46 54 58	168 06 52	45.0	135.0
91	46 54 58	168 06 52	45.5	136.5
92	46 54 58	168 06 52	46.0	138.0
93	46 54 58	168 06 52	46.5	139.5
94	46 54 58	168 06 52	47.0	141.0
95	46 54 58	168 06 52	47.5	142.5
96	46 54 58	168 06 52	48.0	144.0
97	46 54 58	168 06 52	48.5	145.5
98	46 54 58	168 06 52	49.0	147.0
99	46 54 58	168 06 52	49.5	148.5
100	46 54 58	168 06 52	50.0	150.0



12

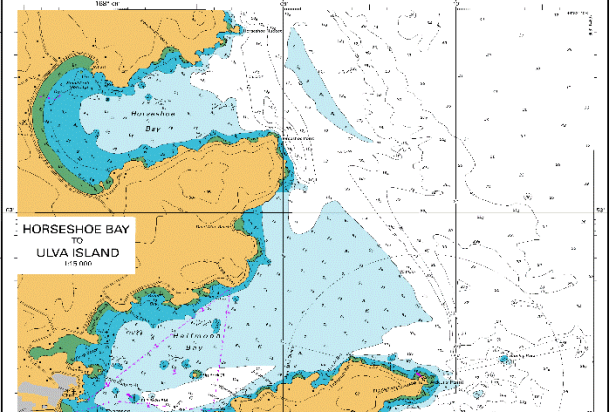
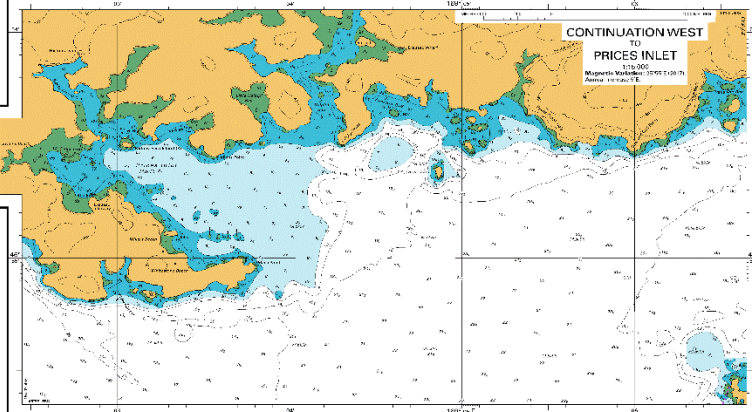
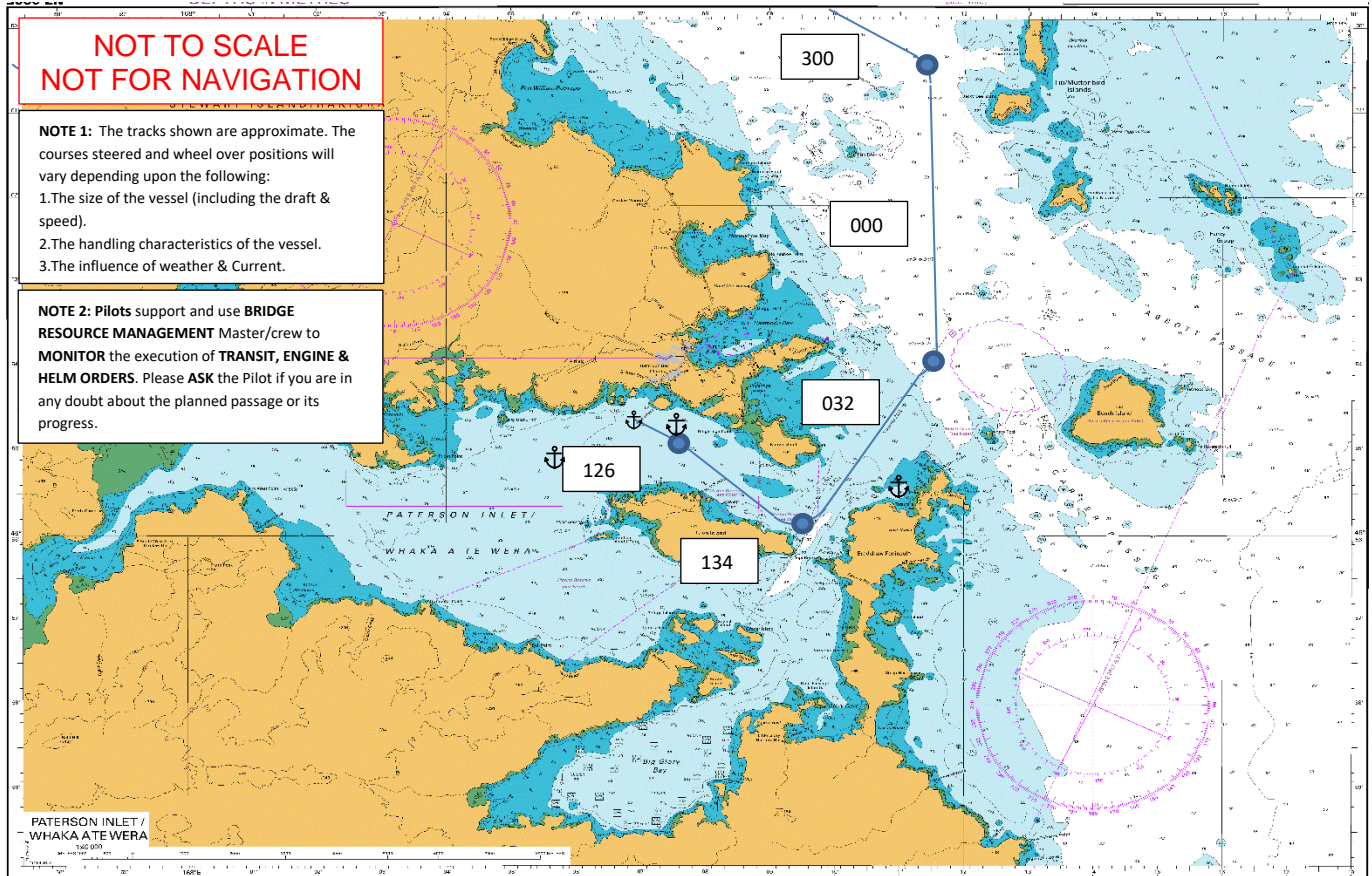
STEWART ISLAND-NORTHERN APPROACH

Latitude	Longitude	Name	Remark	Radius(n.m)	WOP(n.m)	Course°	Distance'	Xtrack(m)	Time(min)	Speed(kn)
46° 49.48'S	168° 08.87'E	WP001	North Approach	1.0'	0.5'	120	2.2	50	11	12
46° 50.60'S	168° 11.68'E	WP002	Polybank Shoal	1.0'	0.5'	180	3.1	50	16	12
46° 53.70'S	168° 11.68'E	WP003	Fast rock	1.0'	0.5'	212	2.8	50	14	12
46° 56.12'S	168° 09.45'E	WP004	Ulva island	0.75'	0.5'	314	1.7	50	15	6
46° 54.96'S	168° 07.68'E	WP005	Iona island	1.0'	0.5'	306	0.6	50	10	4
46° 54.58'S	168° 06.92'E	WP006	Anchorage	1.0'	0.5'		10NM		1H 7M	

**NOT TO SCALE
NOT FOR NAVIGATION**

NOTE 1: The tracks shown are approximate. The courses steered and wheel over positions will vary depending upon the following:
1. The size of the vessel (including the draft & speed).
2. The handling characteristics of the vessel.
3. The influence of weather & Current.

NOTE 2: Pilots support and use **BRIDGE RESOURCE MANAGEMENT** Master/crew to **MONITOR** the execution of **TRANSIT, ENGINE & HELM ORDERS**. Please **ASK** the Pilot if you are in any doubt about the planned passage or its progress.



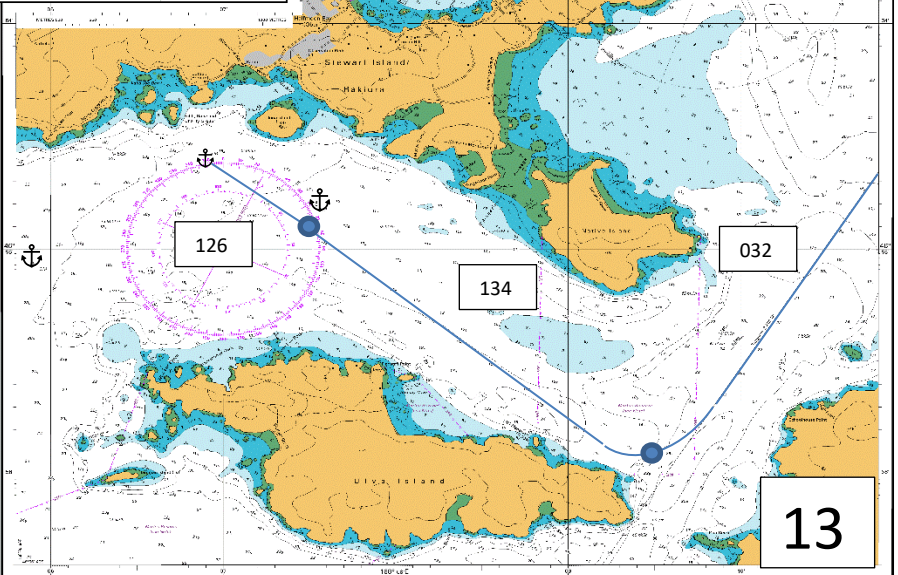
Land Information New Zealand
NEW ZEALAND
STEWART ISLAND/RAKIURA
PATERSON INLET / WHAKA A TE WERA

DEPTHS IN METRES

Chart 1000
This chart is a continuation of Chart 1000, which covers the area from 46° 49' S to 46° 54' S and 168° 08' E to 168° 12' E. It shows the approach to Paterson Inlet and Whaka A Te Wera. The chart includes depth contours, navigational aids, and a planned track with waypoints 126, 134, and 032. A large pink circle is drawn around the 126 waypoint.

Scale
1:50,000

Chart 1000
This chart is a continuation of Chart 1000, which covers the area from 46° 49' S to 46° 54' S and 168° 08' E to 168° 12' E. It shows the approach to Paterson Inlet and Whaka A Te Wera. The chart includes depth contours, navigational aids, and a planned track with waypoints 126, 134, and 032. A large pink circle is drawn around the 126 waypoint.



13

STEWART ISLAND-NORTHERN DEPARTURE

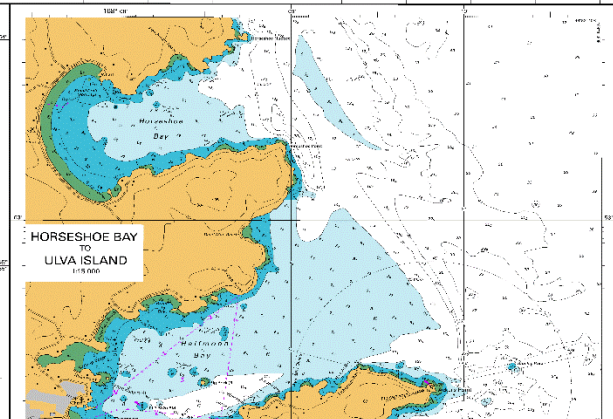
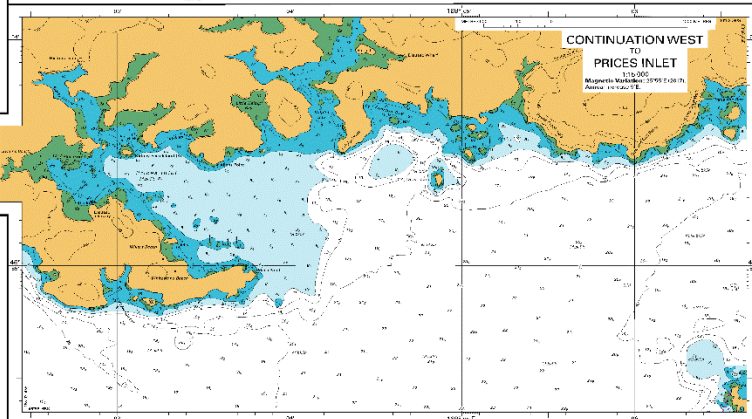
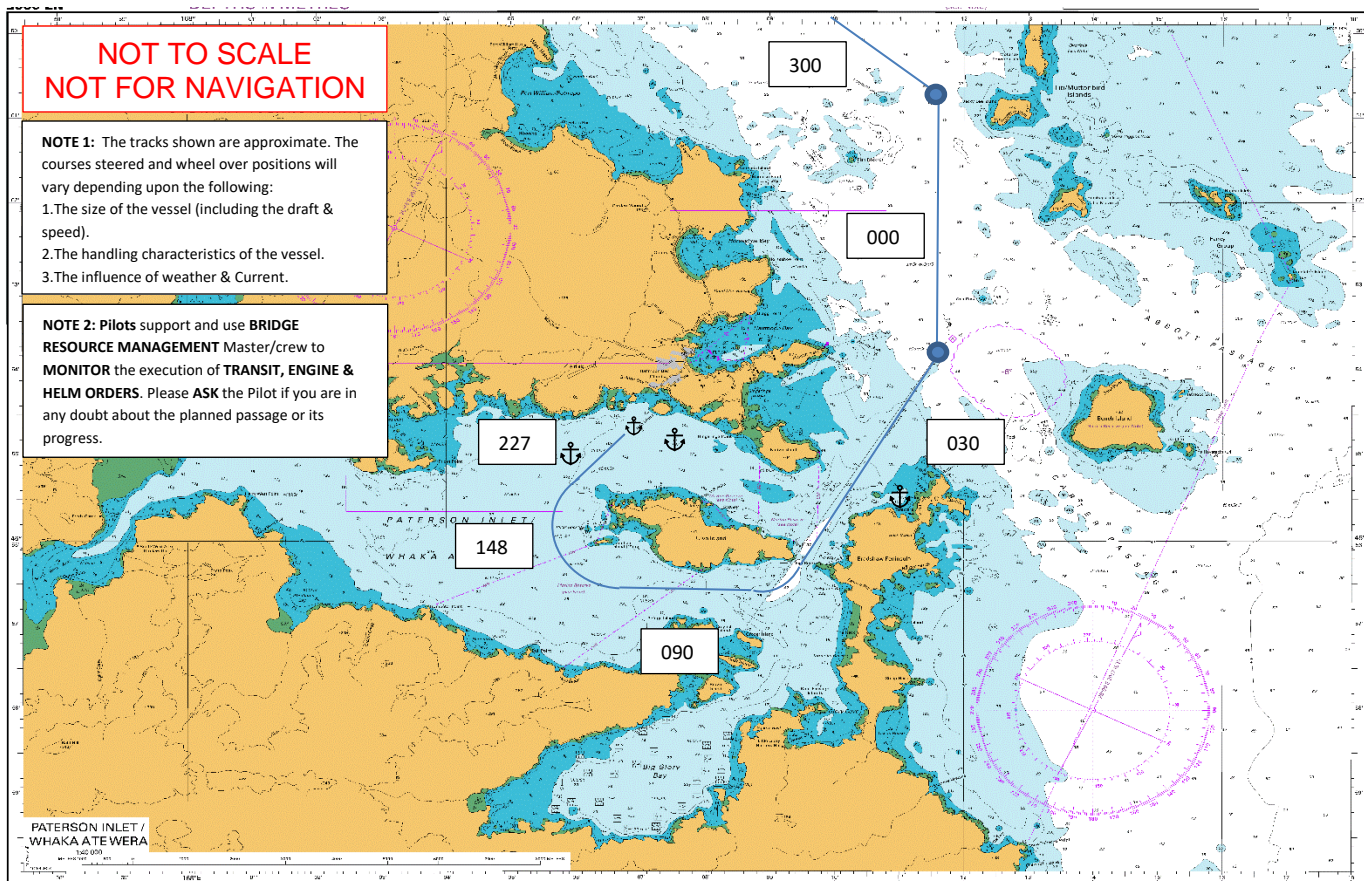
Latitude	Longitude	Name	Remark	Radius(n.m)	WOP(n.m)	Course°	Distance'	Xtrack(m)	Time(min)	Speed(kn)
46° 54.58'S	168° 06.92'E	WP006	Anchorage	1.0'	0.5'	126	0.6	50	10	4
46° 54.96'S	168° 07.68'E	WP005	Iona Island	1.0'	0.5'	134	1.7	50	15	6
46° 56.12'S	168° 09.45'E	WP004	Ulva Island	0.75'	0.5'	032	2.8	50	14	12
46° 53.70'S	166° 11.68'E	WP003	Fast rock	1.0'	0.5'	000	3.1	50	16	12
46° 50.60'S	168° 11.68'E	WP002	Polybank Shoal	1.0'	0.5'	300	2.2	50	11	12
46° 49.48'S	168° 08.87'E	WP001	North Approach	1.0'	0.5'		10NM		1H 7M	

**NOT TO SCALE
NOT FOR NAVIGATION**

NOTE 1: The tracks shown are approximate. The courses steered and wheel over positions will vary depending upon the following:

1. The size of the vessel (including the draft & speed).
2. The handling characteristics of the vessel.
3. The influence of weather & Current.

NOTE 2: Pilots support and use **BRIDGE RESOURCE MANAGEMENT** Master/crew to **MONITOR** the execution of **TRANSIT, ENGINE & HELM ORDERS**. Please **ASK** the Pilot if you are in any doubt about the planned passage or its progress.



Land Information New Zealand
VPR07PA 4873

**STEWART ISLAND/RAKIURA
PATERSON INLET / WHAKA A TE WERA**

DEPTHS IN METRES

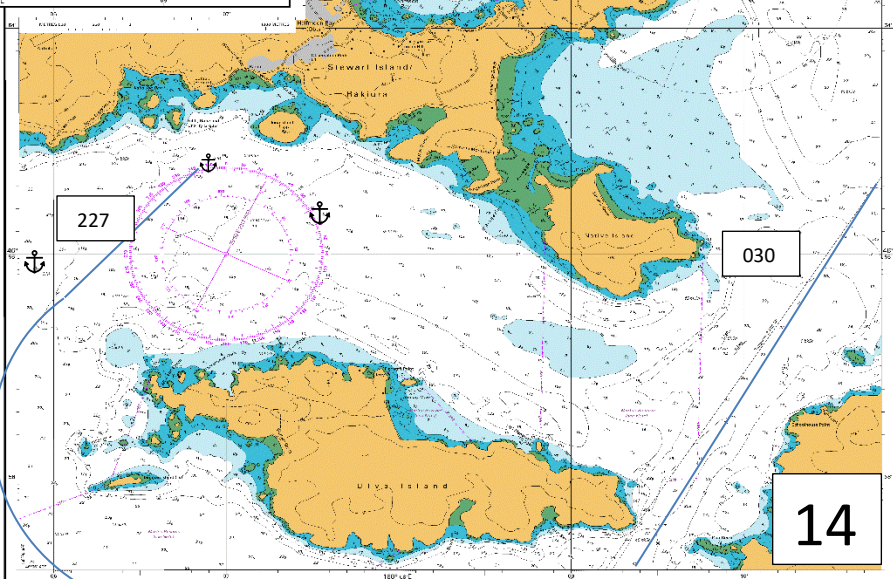
Depths are shown in metres. The chart is based on the latest available soundings and is subject to change. The chart is not to be used for navigation purposes. The chart is not to be used for navigation purposes. The chart is not to be used for navigation purposes.

Tide Tables referred to by SWIP

Low Water (LW) 0000
High Water (HW) 0000
Spring Tides (ST) 0000
Neap Tides (NT) 0000

STEWART ISLAND - NORTHERN DEPARTURE SOUTH OF ULVA ISLAND

Lat	Long	Name	Remark	Radius(n.m)	WOP(n.m)	Course°	Distance'	Xtrack(m)	Time(min)	Speed(kn)
46° 54.58'S	168° 06.92'E	WP001	Anchorage	1.0'	0.5'	226	1.5	50	23	4
46° 55.66'S	168° 05.28'E	WP002	West Ulva	0.75'	0.5'	150	1.2	50	9	8
46° 56.67'S	168° 06.14'E	WP003	Tamihau Is	1.0'	0.5'	090	2.0	50	15	8
46° 56.67'S	168° 09.10'E	WP004	South Ulva	1.0'	0.5'	030	3.5	50	26	8
46° 53.70'S	166° 11.67'E	WP005	Fast Rock	1.0'	0.5'	000	3.1	50	16	12
46° 50.60'S	168° 11.68'E	WP006	Poly Bank Shoal	1.0'	0.5'	300	2.2	50	11	12
46° 49.48'S	168° 08.87'E	WP007	To Fiordlands	1.0'	0		14NM		1H 40M	



14

STEWART ISLAND-NORTHERN DEPARTURE SOUTH OF ULVA ISLAND

Latitude	Longitude	Name	Remark	Radius(n.m)	WOP(n.m)	Course°	Distance'	Xtrack(m)	Time(min)	Speed(kn)
46° 54.58'S	168° 06.92'E	WP001	Anchorage	1.0'	0.5'	226	1.5	50	23	4
46° 55.66'S	168° 05.28'E	WP002	West Ulva	0.75'	0.5'	150	1.2	50	9	8
46° 56.67'S	168° 06.14'E	WP003	Tamihau Is	1.0'	0.5'	090	2.0	50	15	8
46° 56.67'S	168° 09.10'E	WP004	South Ulva	1.0'	0.5'	030	3.5	50	26	8
46° 53.70'S	166° 11.67'E	WP005	Fast Rock	1.0'	0.5'	000	3.1	50	16	12
46° 50.60'S	168° 11.68'E	WP006	Poly Bank Shoal	1.0'	0.5'	300	2.2	50	11	12
46° 49.48'S	168° 08.87'E	WP007	To Fiordlands	1.0'	0		14NM		1H 40M	