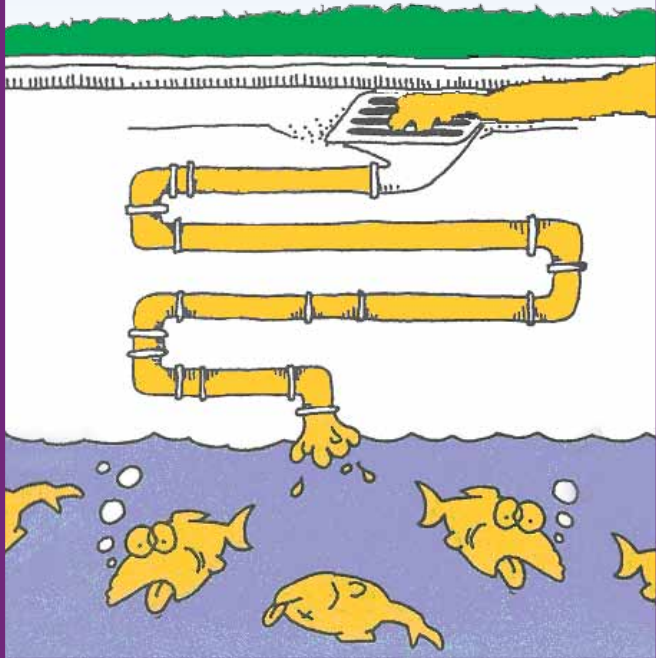


Did you know...?

Dirt and oil from your car are contaminants, as are the detergents you use to wash it. They pollute our waterways if they are washed down the drain.

It is an offence under the Resource Management Act to discharge any contaminant to water directly through a stormwater drain without prior authorisation. You could be fined up to \$750.

For more information refer to the *Regional Water Plan for Southland* on the Environment Southland website www.es.govt.nz



Outside drains are for rain water only and lead directly to our rivers and streams.



Wash your vehicle on unsealed ground to prevent washwater from getting into stormwater drains.



Published by:
Environment Southland, Cnr North Road & Price St, Invercargill
Tel 03 211 5115 Email service@es.govt.nz www.es.govt.nz

February 2013

WASHING YOUR CAR TOP TIPS!

Prevent pollution in our waterways



The truth about washwater

Runoff from washing vehicles and equipment contains pollutants including detergents, dirt, oil, concrete, fuel residue, metals, paint and more.

When you wash your vehicle and equipment on the road or in your driveway, the washwater ends up down a stormwater drain. **These drains are designed for rain water only** – they empty untreated stormwater directly into our rivers and streams. So you need to change where and how you wash your vehicle.

Although the pollutants in washwater are in small amounts, their cumulative effect causes serious environmental damage including:

- ❖ Reducing the oxygen and sunlight needed for the good health and wellbeing of aquatic animals and plants
- ❖ Poisoning of aquatic animals and plants
- ❖ The build-up of toxins in fish and other aquatic animals, which has the potential to cause harm to people who eat them.

Stormwater drains discharge untreated water directly into rivers and streams.



WASH IT RIGHT...

When washing your vehicle and equipment there are ways to prevent pollutants from going down stormwater drains and into our waterways. **By following these simple steps you can help to keep Southland's waterways healthy for all to enjoy.**

Wash your car on unsealed ground...



Use a hose or bucket and cloth on a grass verge, lawn or gravel area where the run off water can be filtered by the plants and soil.

Avoid using detergents...



All detergents, even biodegradable and other 'eco-friendly' products are pollutants and toxic to aquatic life. If washing on a sealed surface is your only option, use a bucket and two cloths – one to wash and one to polish.

Dispose of washwater correctly...



Empty the dirty water into a toilet or sink so that it goes into the sewage system and is treated.

Go to a car wash...



Water from a commercial car wash goes into the sewage system and is treated.